




Basevan.com General Inspection

Inspection details

Name of inspector	Franklyn T Bromfield
Date of inspection	01/04/2025
Signature	

Vehicle details

Vehicle registration	YX65DOJ
Vehicle chassis no.	ZFA25000002887928
Miles (if in km, multiply by 0.62)	289,907
Make	FIAT
Model	ducato
Transmission	Manual, 6 speed
Factory immobiliser installed	Yes
Speed limiter installed	No
Drive configuration	FWD
Gross Vehicle Weight (kg)	4250
Towing capacity	2000
Tow bar installed	No

Off side front

Age (month/year) Manufactured	16/22
Make, brand.	Michelin
Tyre size	225/75/R16
Pressure 1	
Pressure 2	
Wearing / Perishing (inner)	none
Wearing / Perishing (outer)	None
tread depth (mm)	5
General comments	recent tyre, some wear



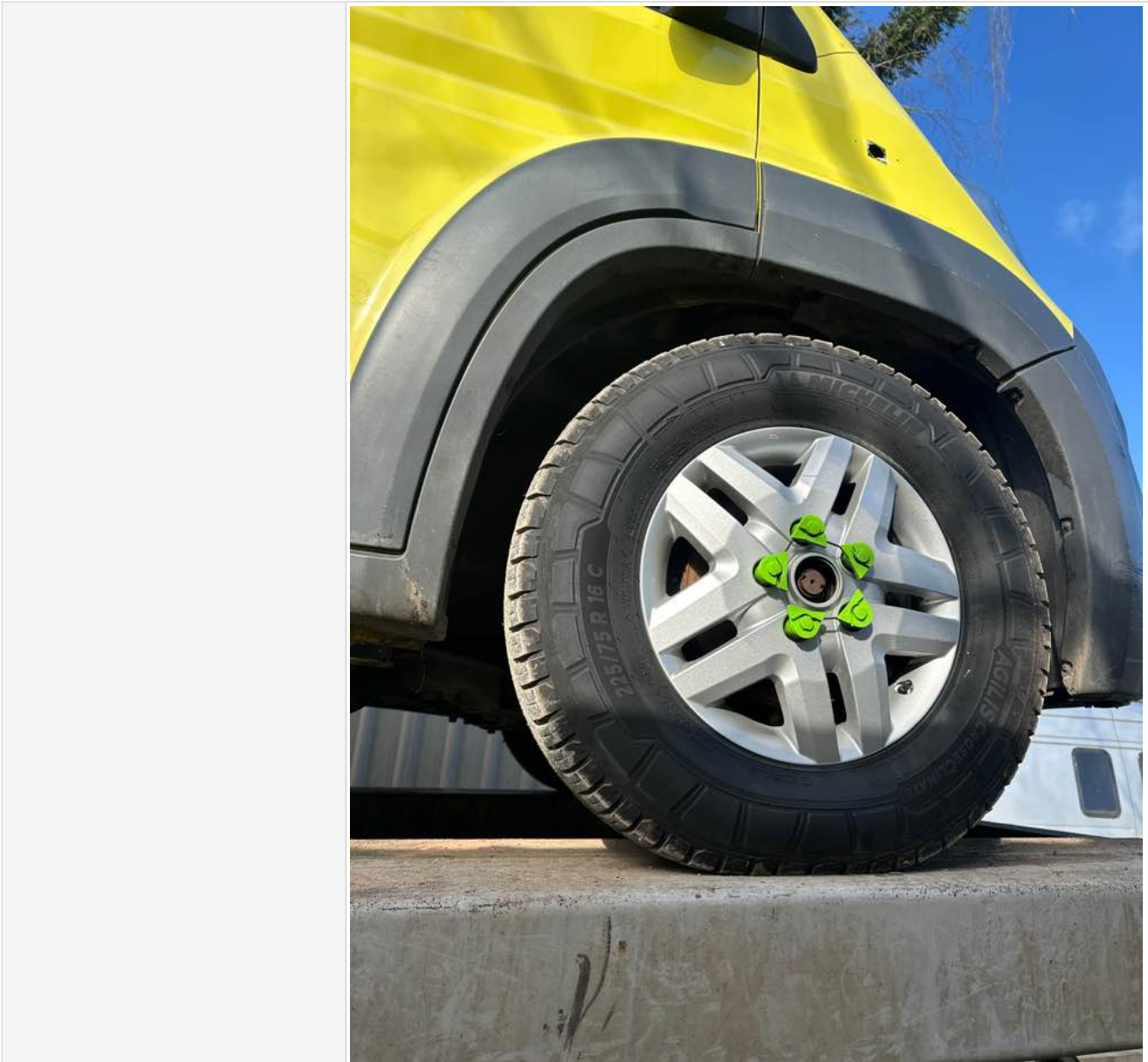
Basevan.com General Inspection

Images of tyre





Basevan.com General Inspection



Near side front

Age (month/year) Manufactured	25/24
Make, brand.	Michelin
Tyre size	225/75/R16
Pressure 1	
Pressure 2	
Wearing / Perishing (inner)	none
Wearing / Perishing (outer)	None
tread depth (mm)	8
General comments	brand spanking new



Basevan.com General Inspection

Images of tyre





Basevan.com General Inspection




near side rear

Age (month/year) Manufactured	08/22
Make, brand.	Michelin
Tyre size	225/75/R16
Pressure 1	
Pressure 2	
Wearing / Perishing (inner)	Slight
Wearing / Perishing (outer)	Slight
tread depth (mm)	6

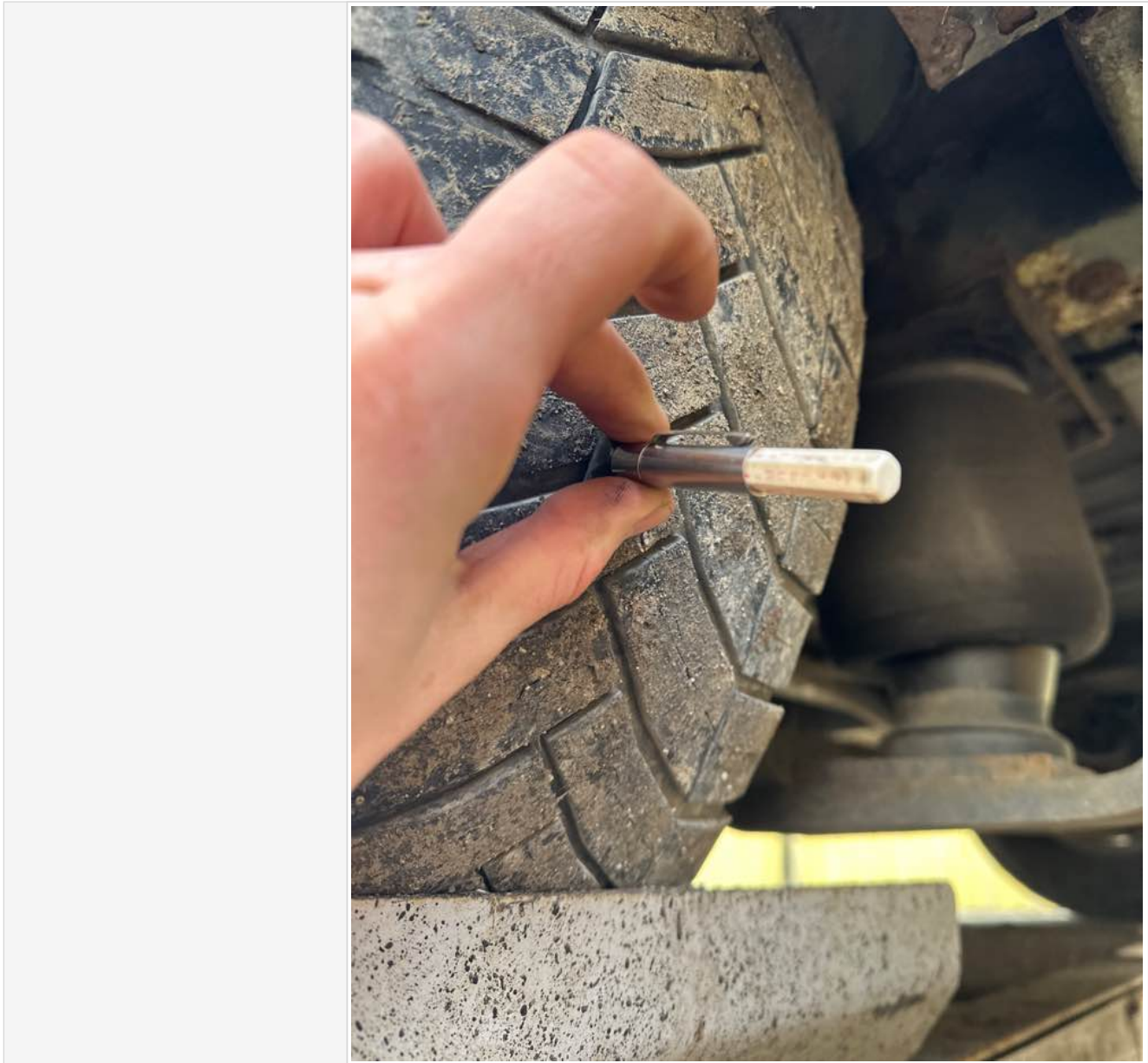


Basevan.com General Inspection

General comments	good tyre lots of life to go- slight abnormal wear toward shoulders, possibly overinflated?
Images of tyre	

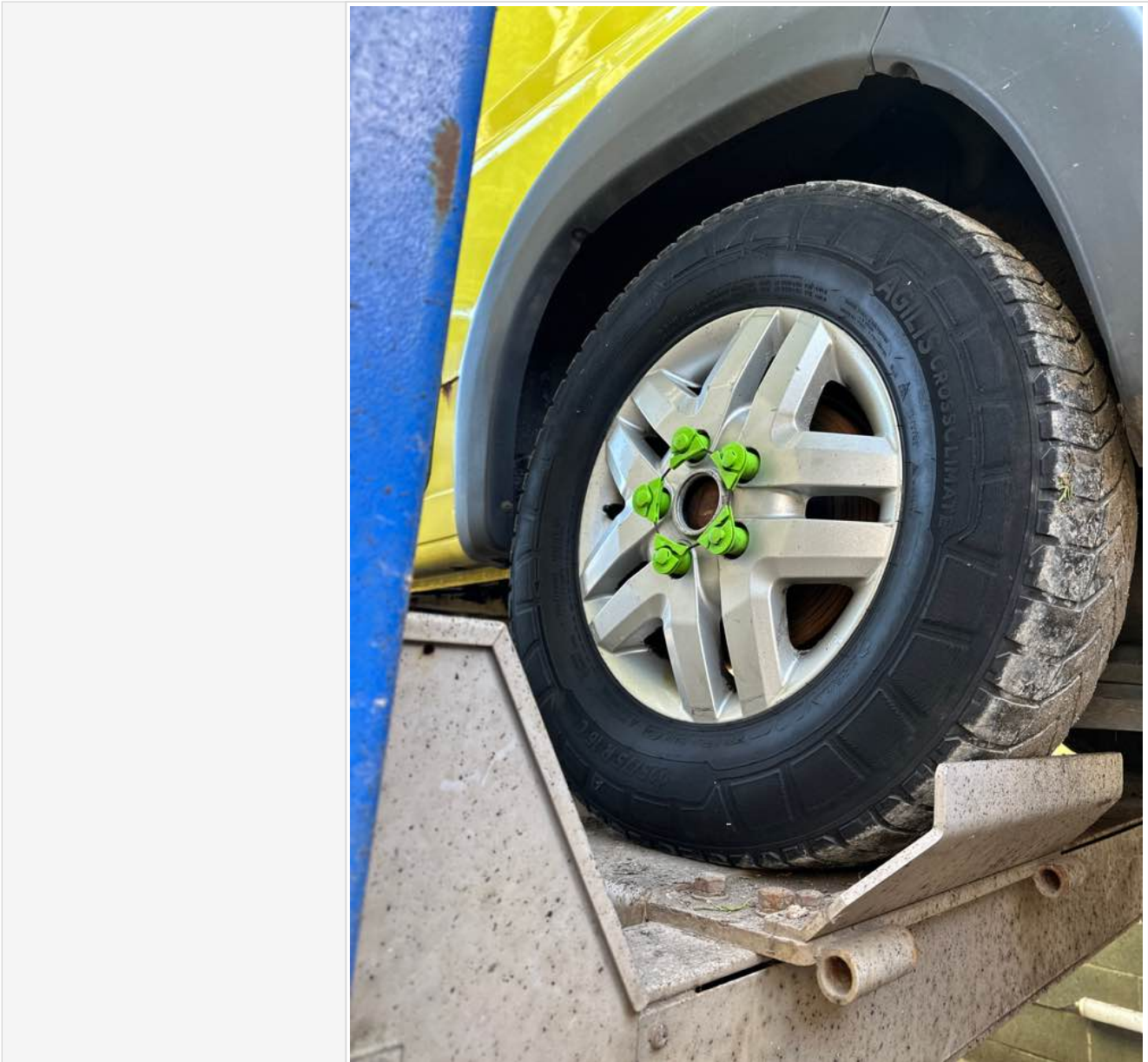


Basevan.com General Inspection





Basevan.com General Inspection



Off side rear

Age (month/year) Manufactured	04/22
Make, brand.	Michelin
Tyre size	225/75/R16
Pressure 1	
Pressure 2	
Wearing / Perishing (inner)	none
Wearing / Perishing (outer)	None
tread depth (mm)	4
General comments	worn more toward inner edge



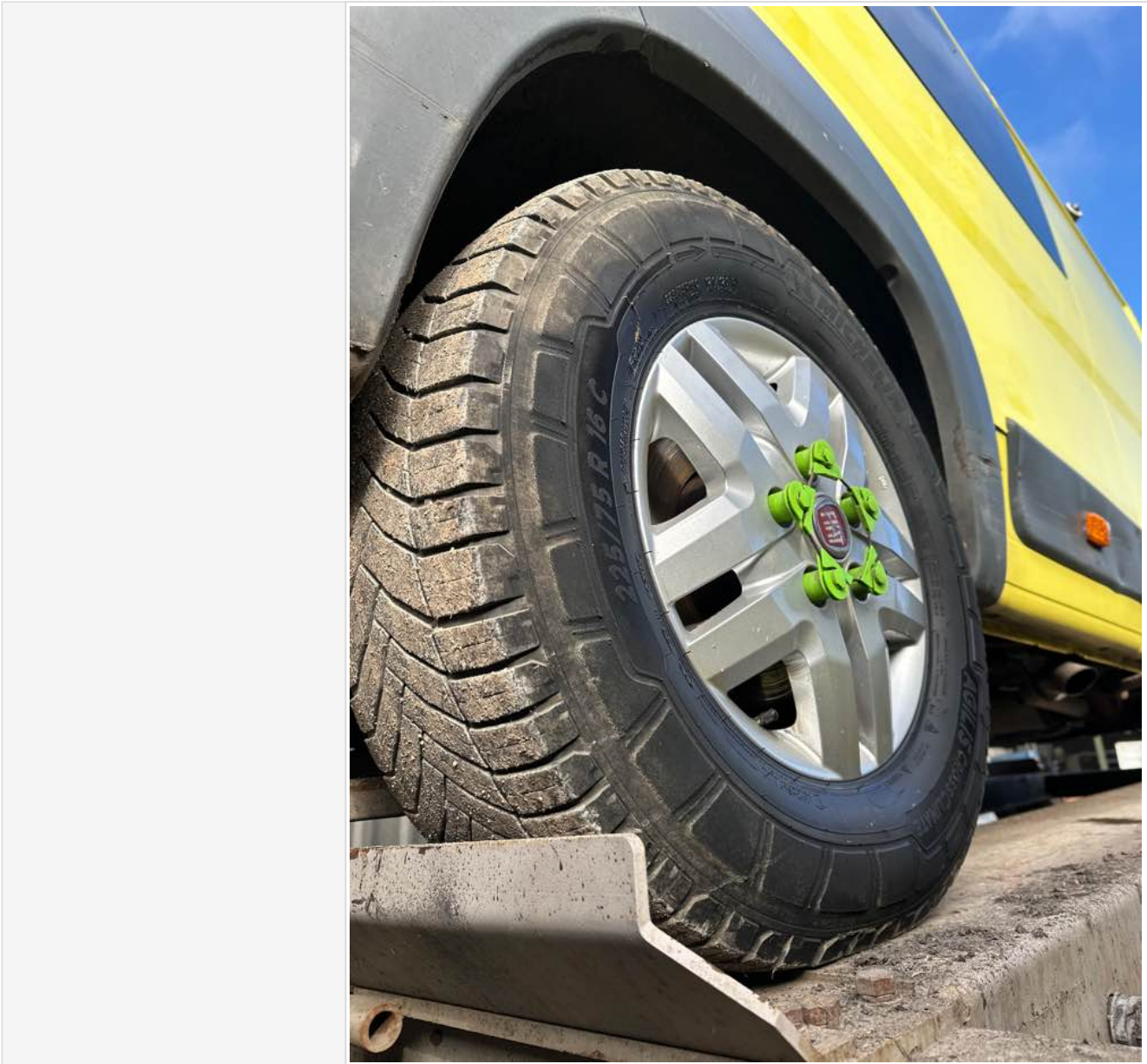
Basevan.com General Inspection

Images of tyre





Basevan.com General Inspection



off side Inner (for twin wheel vans)

Is the vehicle a twin wheel axle? (if no don't fill out)	No
Age (month/year) Manufactured	
Make, brand.	
Tyre size	
Pressure 1	
Pressure 2	
Wearing / Perishing (inner)	
Wearing / Perishing (outer)	



Basevan.com General Inspection

tread depth (mm)	
General comments	
Images of tyre	

near side Inner (for twin wheel vans)

Is the vehicle a twin wheel axle? (if no don't fill out)	No
Age (month/year) Manufactured	
Make, brand.	
Tyre size	
Pressure 1	
Pressure 2	
Wearing / Perishing (inner)	
Wearing / Perishing (outer)	
tread depth (mm)	
General comments	
Images of tyre	

Spare wheel

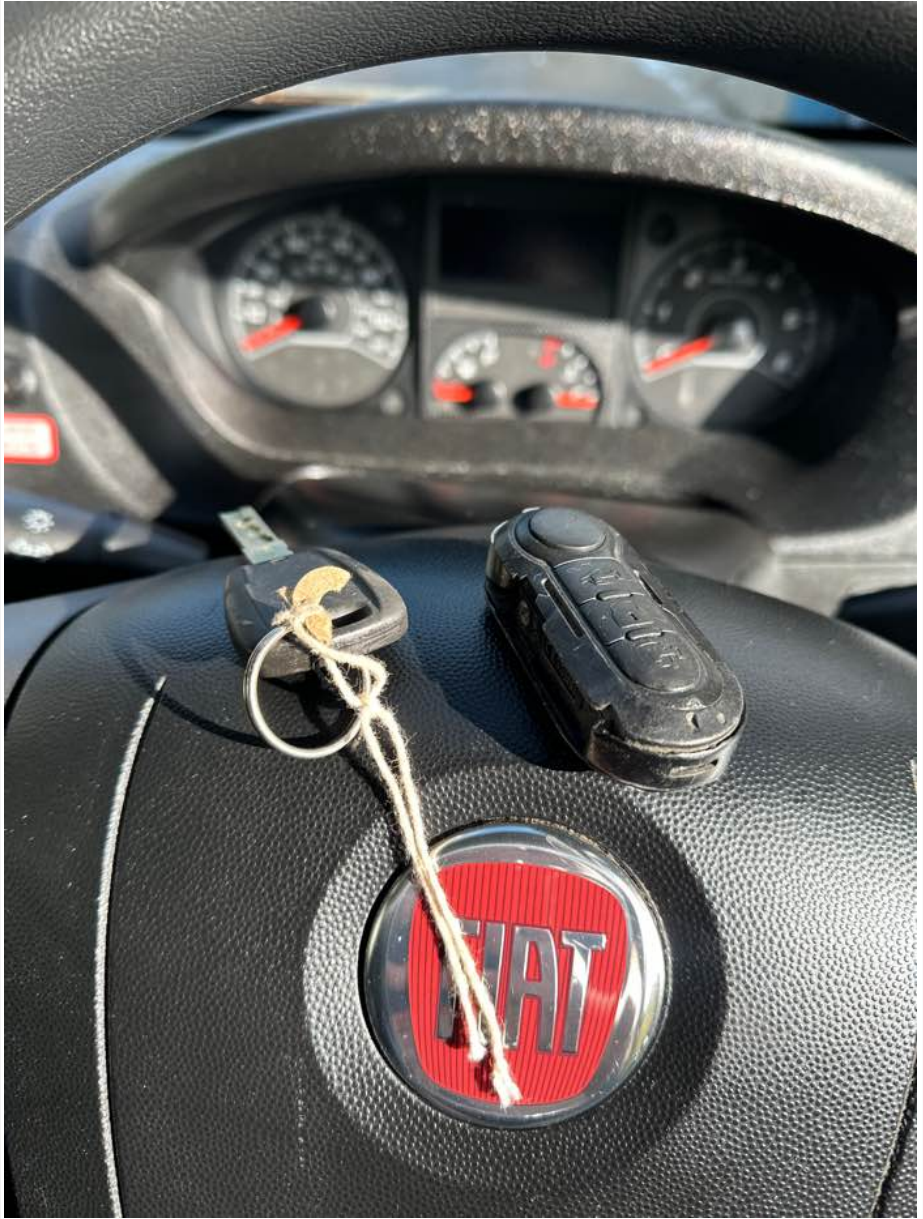
Spare installed? (If no, don't fill out)	No
Age (month/year) Manufactured	
Make, brand.	
Tyre size	
Pressure 1	
Pressure 2	
Wearing / Perishing (inner)	
Wearing / Perishing (outer)	
tread depth (mm)	
General comments	
Images of tyre	

Vehicle locking

Factory central locking fitted?	Yes
Response from key fob?	Yes
Response from in-cab locking button?	Yes
Do all the doors lock from central locking function?	Some



Basevan.com General Inspection

Select the following doors that lock.	N/S Front, O/S Front, N/S SL
Method of locking	Fob
In conclusion can all the doors be locked in some way and thus the vehicle can be left unattended at night safely?	No
How many keys present at time of inspection?	
Comment	

In cab checks

Number of seats (cab only)	Driver & 1 passenger
Cab heater check	Does not work
Comment on cab heater	climate control- buzzes but does nothing



Basevan.com General Inspection

Electric windows present	Yes
Cab windows function check	Driver side function, Passenger side malfunction
Air conditioning present	Yes
Charging socket present (cigarette lighter)	Yes
Function working?	Yes
Radio / Media system fitted?	Yes
Radio / media system check	Functions
Reverse camera present?	No
Reverse camera functioning?	N/A
Show any damage or missing items	

General mechanical checks

Fuel level	1/2 Full
Oil level	Full
Oil conditon	Clean
Start up, chassis battery check	Started without jump pack
Start-up from cold	Instant
Exhaust smoke from cold	Normal
Output Voltage of Alternator test	13.7
Chain or Belt driven engine?	Chain
If belt any proof of change?	N/a
Coolant condition	Clean, Oil present
Coolant level	Full
Anti-freeze temperature check	-16
Washer fluid	Full
Brake fluid	Full
Power steering fluid	Maximum
Dashboard warning light	No warning lights
OBD Scan results	



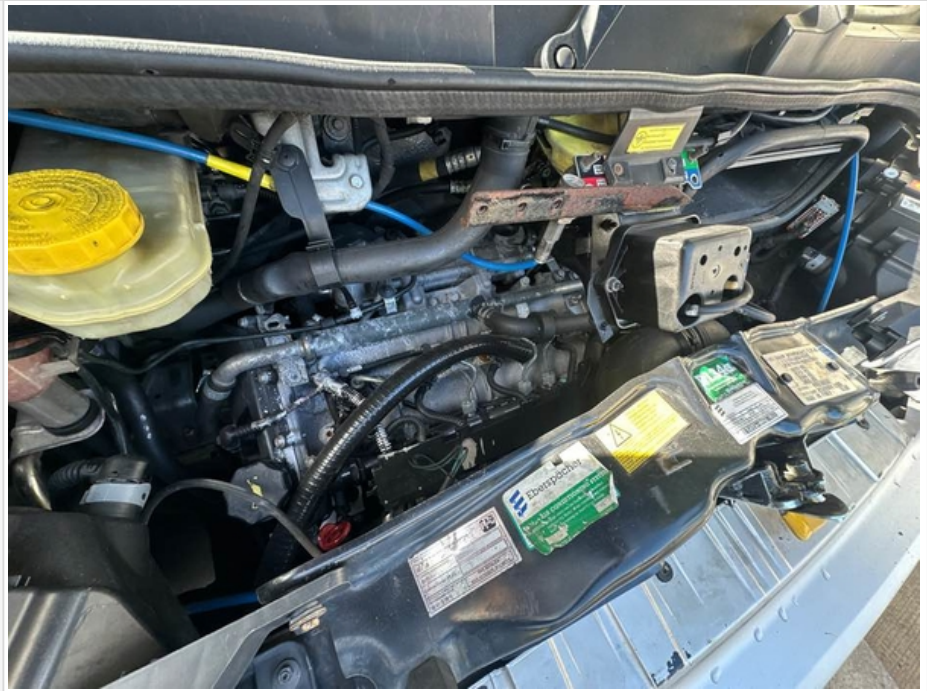
Basevan.com General Inspection

Engine bay photo





Basevan.com General Inspection



Comment

new(ish) engine, oil present in bottle, possible oil cooler? workshop to inspect