




Basevan.com General Inspection

Inspection details

Name of inspector	Franklyn T Bromfield
Date of inspection	29/03/2025
Signature	

Vehicle details

Vehicle registration	CU12EBC
Vehicle chassis no.	VF1MAF4DE46139884
Miles (if in km, multiply by 0.62)	156961
Make	Renault
Model	Master
Transmission	Manual, 6 speed
Factory immobiliser installed	Yes
Speed limiter installed	Yes
Drive configuration	FWD
Gross Vehicle Weight (kg)	3500
Towing capacity	2500
Tow bar installed	No

Off side front

Age (month/year) Manufactured	45/23
Make, brand.	Michelin
Tyre size	225/65/R16
Pressure 1	
Pressure 2	
Wearing / Perishing (inner)	none
Wearing / Perishing (outer)	None
tread depth (mm)	8
General comments	Virtually brand new!



Basevan.com General Inspection

Images of tyre





Basevan.com General Inspection



Near side front

Age (month/year) Manufactured	44/22
Make, brand.	Michelin
Tyre size	225/65/R16
Pressure 1	
Pressure 2	
Wearing / Perishing (inner)	none
Wearing / Perishing (outer)	None
tread depth (mm)	7
General comments	Mint tyre



Basevan.com General Inspection

Images of tyre





Basevan.com General Inspection



near side rear

Age (month/year) Manufactured	15/21
Make, brand.	Michelin
Tyre size	225/65/R16
Pressure 1	
Pressure 2	
Wearing / Perishing (inner)	none
Wearing / Perishing (outer)	None
tread depth (mm)	6
General comments	good tyre



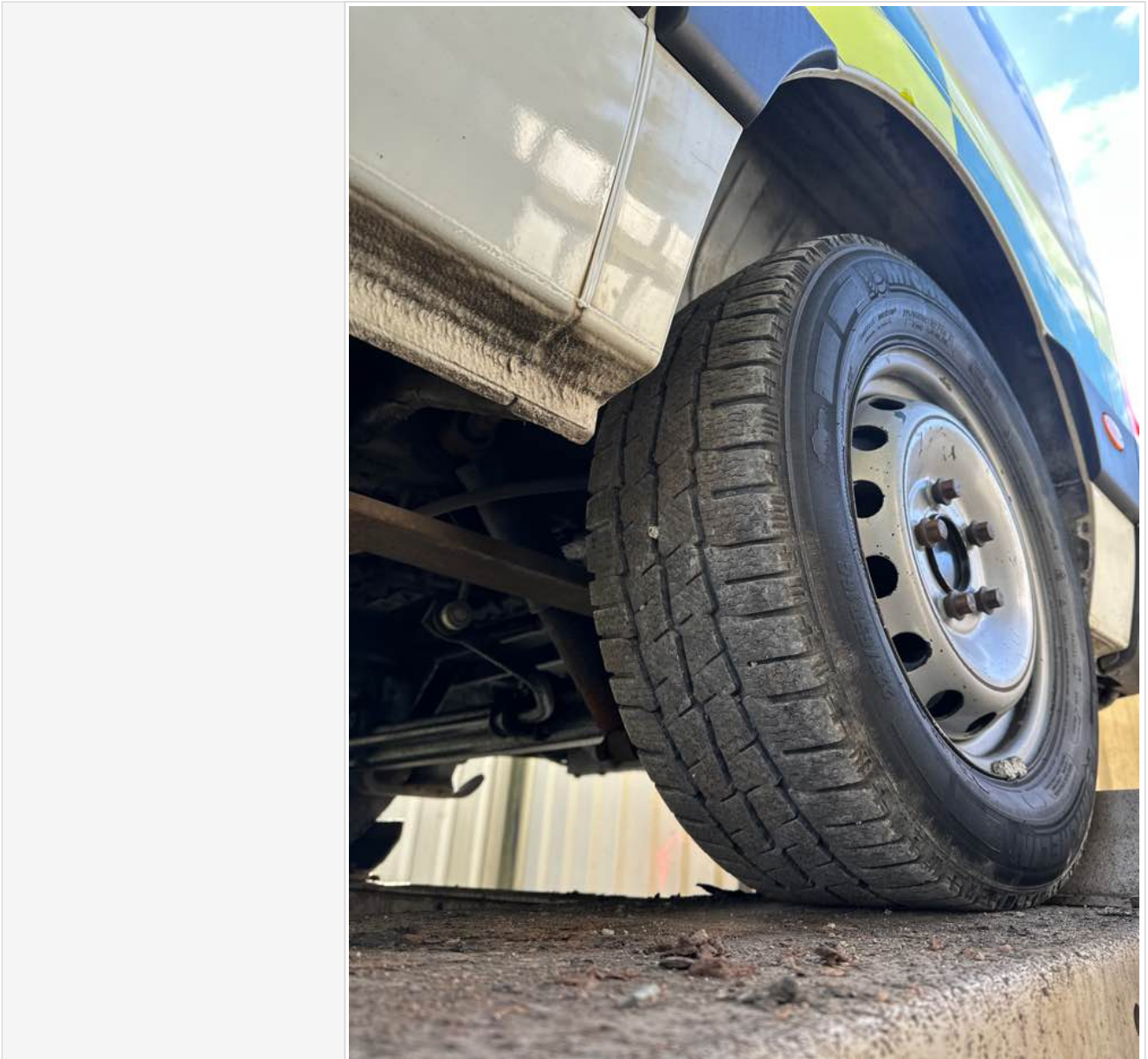
Basevan.com General Inspection

Images of tyre





Basevan.com General Inspection



Off side rear

Age (month/year) Manufactured	39/22
Make, brand.	Michelin
Tyre size	225/65/R16
Pressure 1	
Pressure 2	
Wearing / Perishing (inner)	none
Wearing / Perishing (outer)	None
tread depth (mm)	6
General comments	good tyres all round



Basevan.com General Inspection

Images of tyre





Basevan.com General Inspection



off side Inner (for twin wheel vans)

Is the vehicle a twin wheel axle? (if no don't fill out)	No
Age (month/year) Manufactured	
Make, brand.	
Tyre size	
Pressure 1	
Pressure 2	
Wearing / Perishing (inner)	
Wearing / Perishing (outer)	



Basevan.com General Inspection

tread depth (mm)	
General comments	
Images of tyre	

near side Inner (for twin wheel vans)

Is the vehicle a twin wheel axle? (if no don't fill out)	No
Age (month/year) Manufactured	
Make, brand.	
Tyre size	
Pressure 1	
Pressure 2	
Wearing / Perishing (inner)	
Wearing / Perishing (outer)	
tread depth (mm)	
General comments	
Images of tyre	

Spare wheel

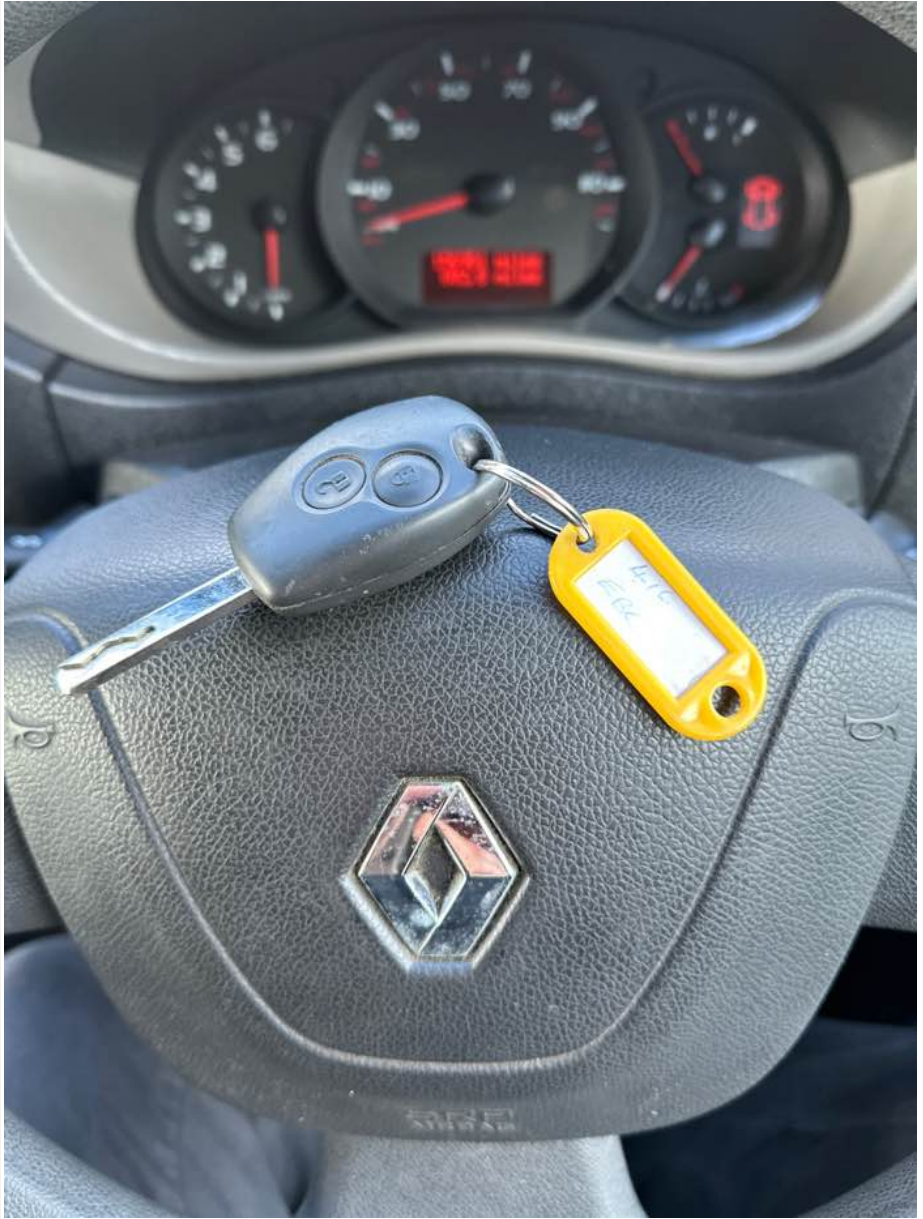
Spare installed? (If no, don't fill out)	No
Age (month/year) Manufactured	
Make, brand.	
Tyre size	
Pressure 1	
Pressure 2	
Wearing / Perishing (inner)	
Wearing / Perishing (outer)	
tread depth (mm)	
General comments	
Images of tyre	

Vehicle locking

Factory central locking fitted?	Yes
Response from key fob?	Yes
Response from in-cab locking button?	Yes
Do all the doors lock from central locking function?	All



Basevan.com General Inspection


Select the following doors that lock.	N/S Front, O/S Front, N/S SL, N/S Rear, O/S Rear
Method of locking	Fob
In conclusion can all the doors be locked in some way and thus the vehicle can be left unattended at night safely?	Yes
How many keys present at time of inspection?	
Comment	works as should

In cab checks

Number of seats (cab only)	Driver & 1 passenger
Cab heater check	Works on all settings
Comment on cab heater	1,2,3,4 functional, but all vents broken

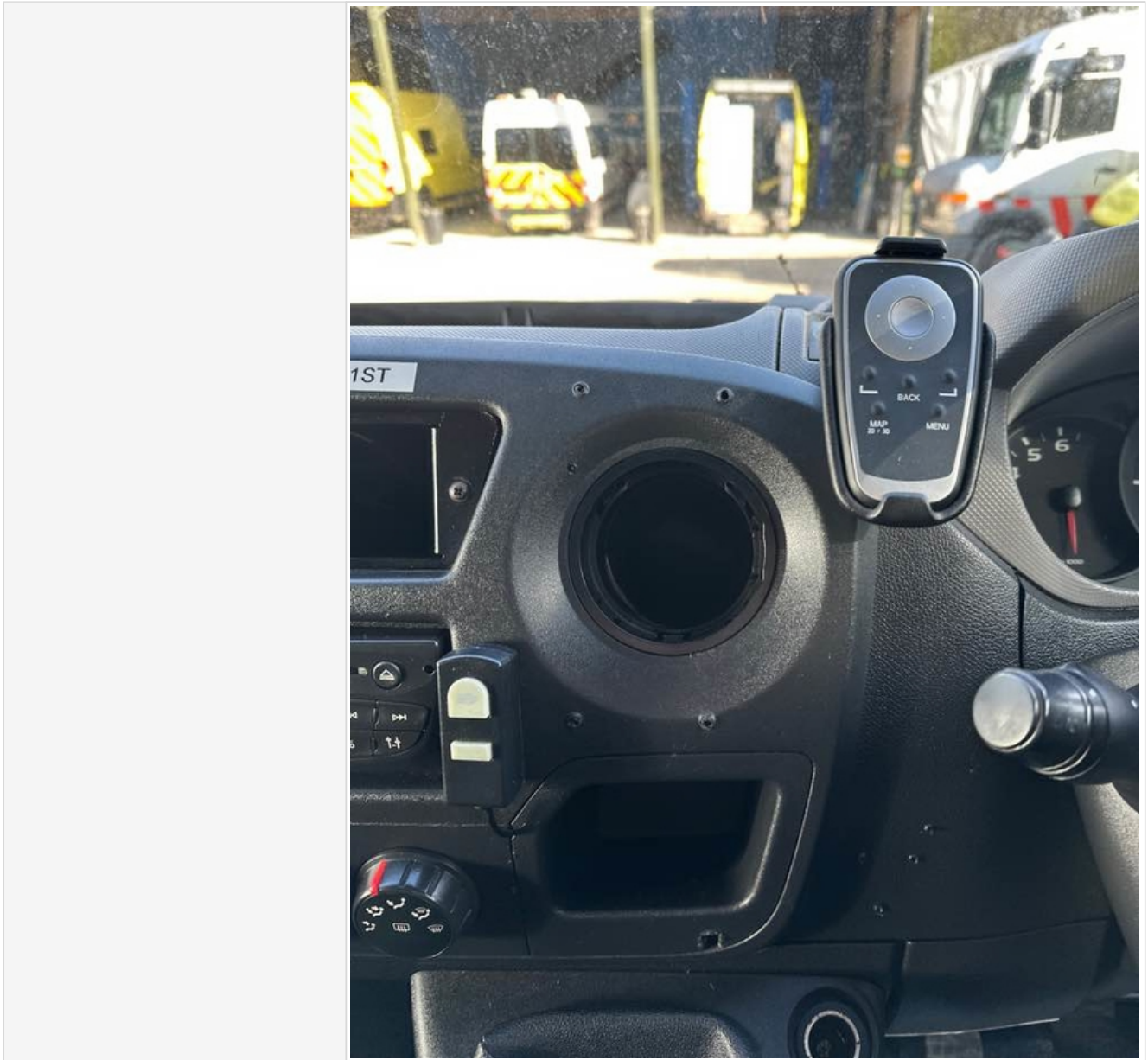


Basevan.com General Inspection

Electric windows present	Yes
Cab windows function check	Driver side function, Passenger side function
Air conditioning present	Yes
Charging socket present (cigarette lighter)	Yes
Function working?	Yes
Radio / Media system fitted?	Yes
Radio / media system check	Functions
Reverse camera present?	No
Reverse camera functioning?	N/A
Show any damage or missing items	

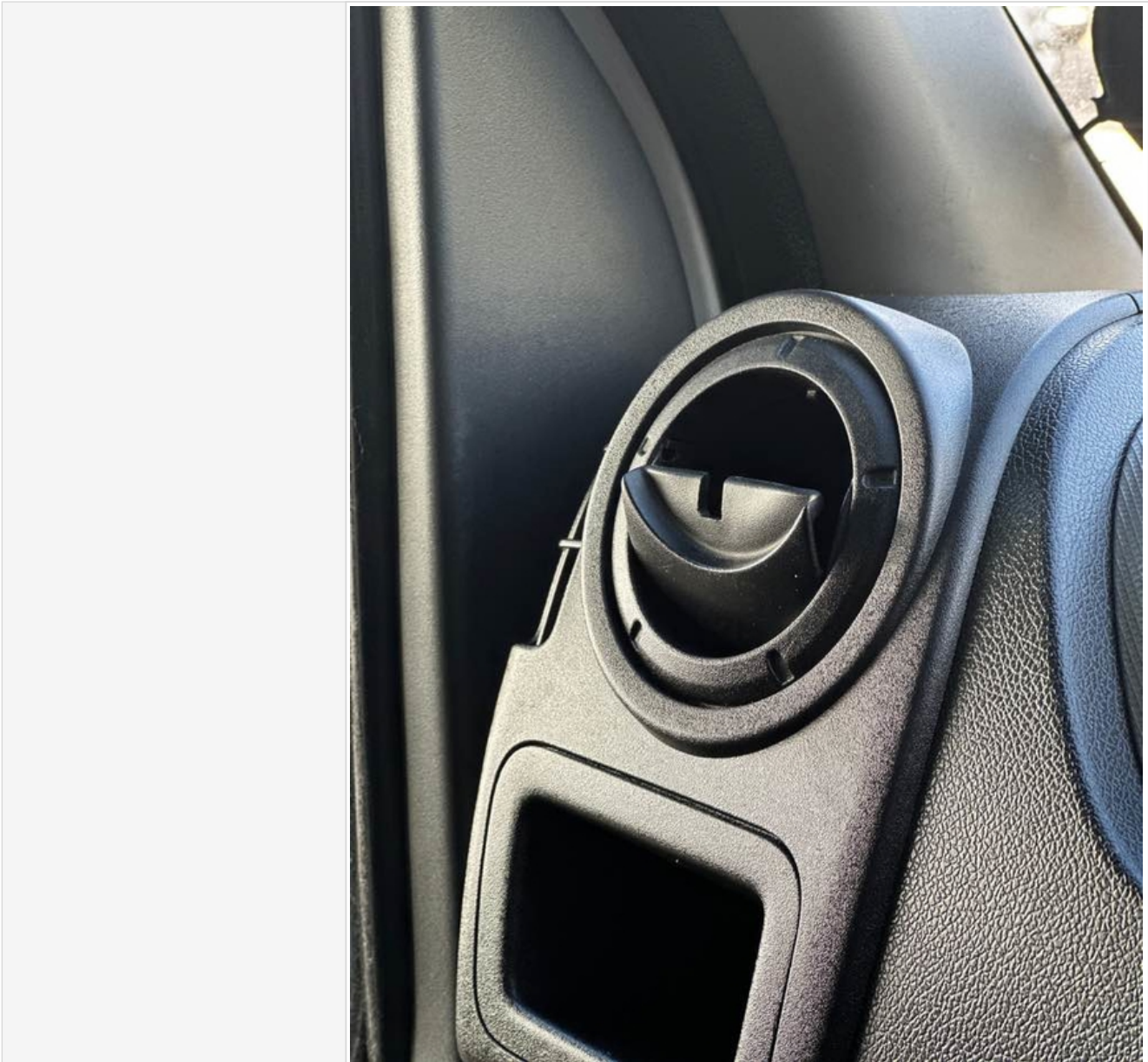


Basevan.com General Inspection





Basevan.com General Inspection




General mechanical checks

Fuel level	1/2 Full
Oil level	Full
Oil conditon	Clean
Start up, chassis battery check	Started without jump pack
Start-up from cold	Instant
Exhaust smoke from cold	Normal
Output Voltage of Alternator test	13.6
Chain or Belt driven engine?	Chain
If belt any proof of change?	n/a

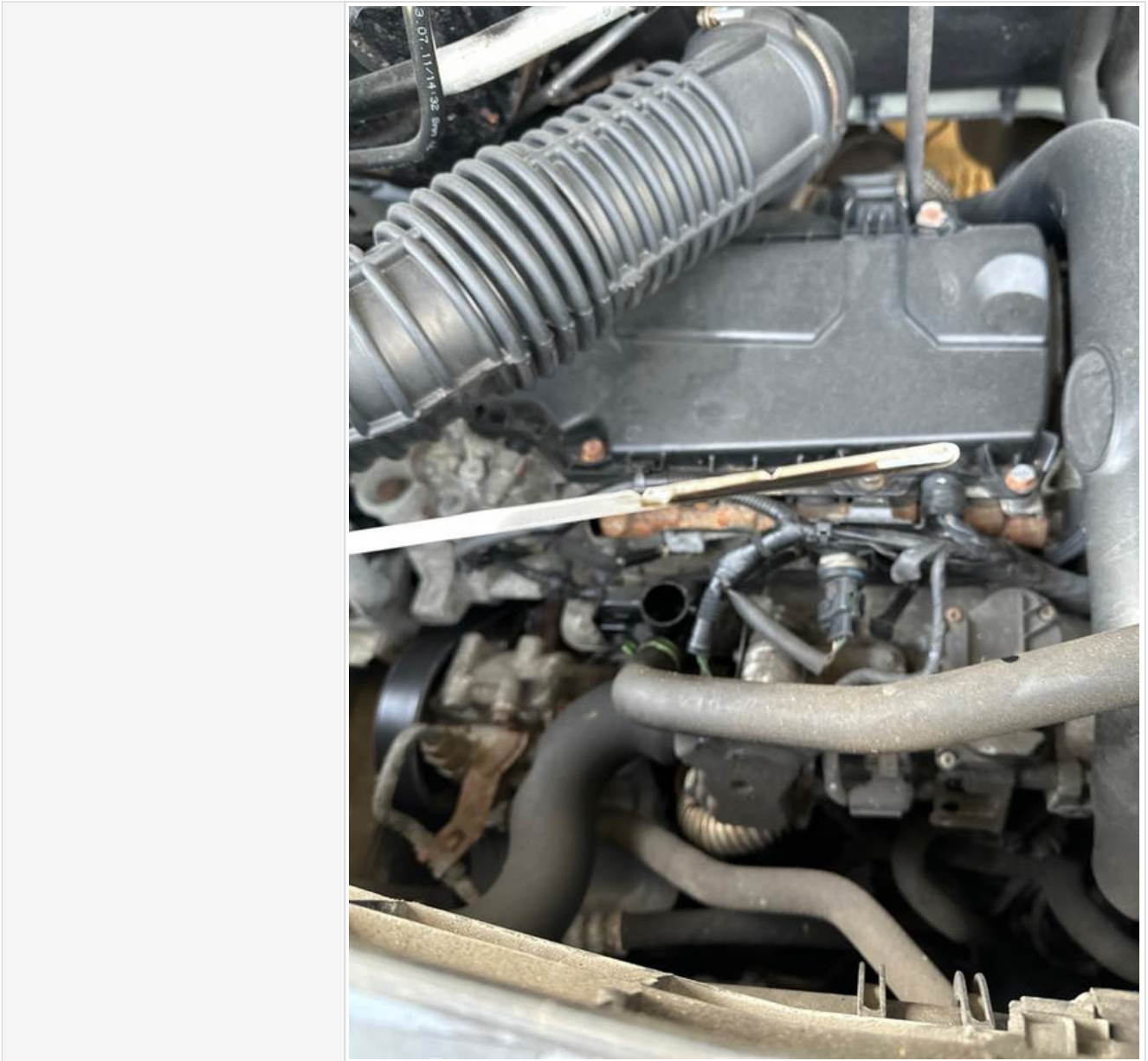


Basevan.com General Inspection

Coolant condition	Clean
Coolant level	Full
Anti-freeze temperature check	-19
Washer fluid	Full
Brake fluid	Full
Power steering fluid	Maximum
Dashboard warning light	No warning lights
OBD Scan results	
Engine bay photo	

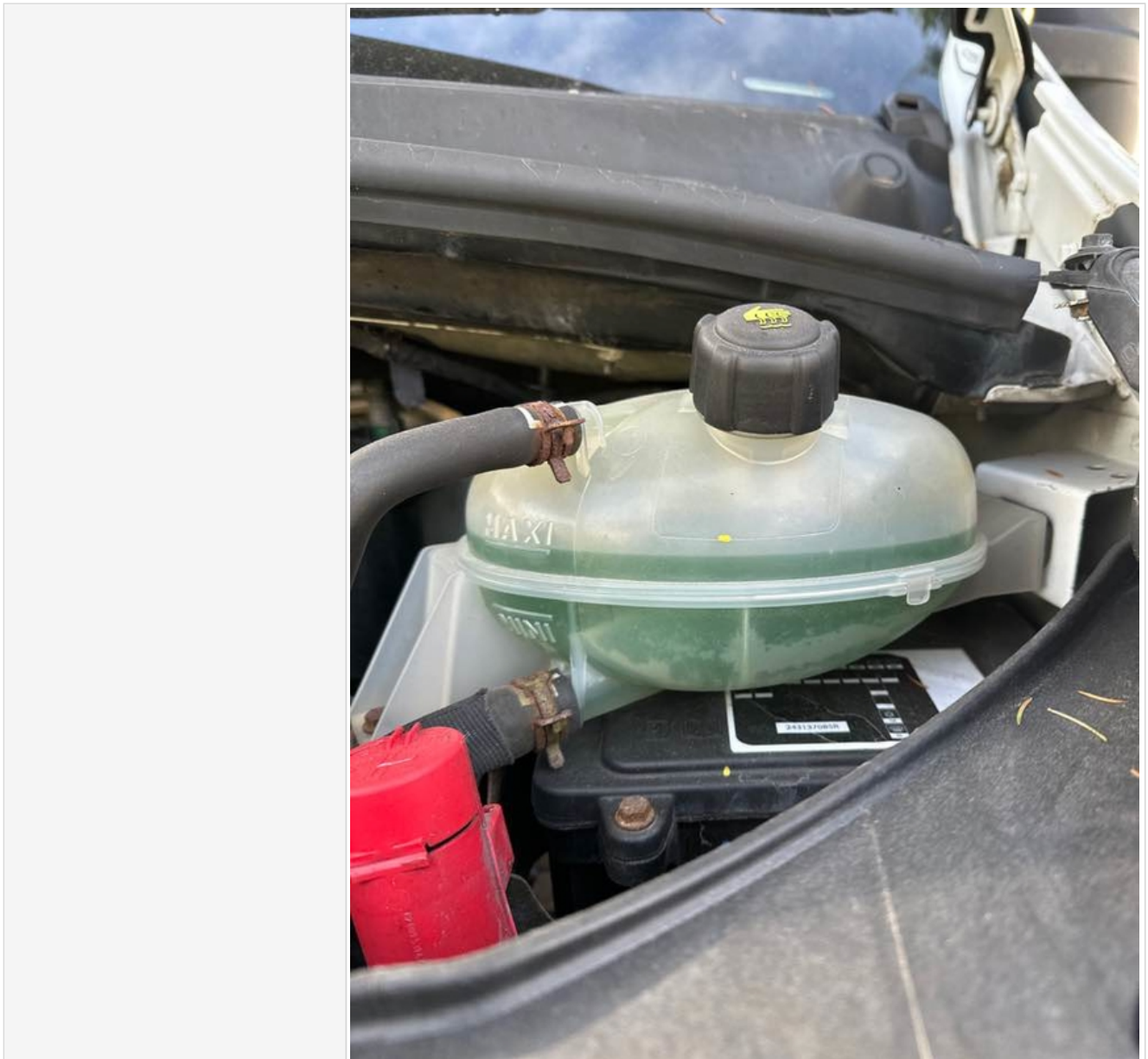


Basevan.com General Inspection



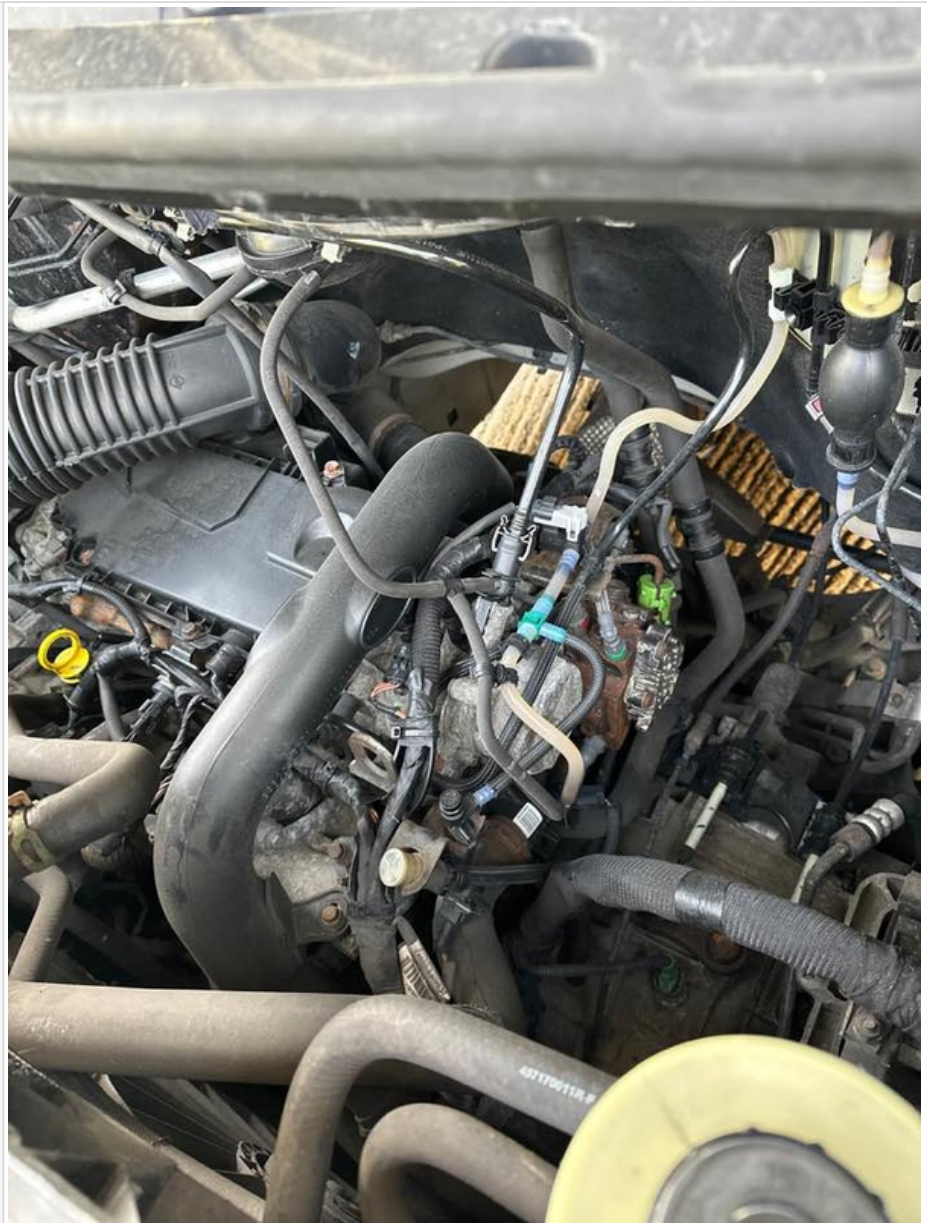


Basevan.com General Inspection





Basevan.com General Inspection



Comment