




## Basevan.com General Inspection

### Inspection details

Name of inspector	Rupert Beeston
Date of inspection	20/02/2025
Signature	

### Vehicle details

Vehicle registration	WA06BYH
Vehicle chassis no.	VF1FDCSL635362473
Miles (if in km, multiply by 0.62)	41,146
Make	Renault
Model	Master
Transmission	6 speed
Factory immobiliser installed	Yes
Speed limiter installed	No
Drive configuration	FWD
Gross Vehicle Weight (kg)	3500
Towing capacity	2000
Tow bar installed	No

### Off side front

Age (month/year) Manufactured	42/19
Make, brand.	Michelin
Tyre size	225/65/R16
Pressure 1	
Pressure 2	
Wearing / Perishing (inner)	none
Wearing / Perishing (outer)	None
tread depth (mm)	9
General comments	Mint



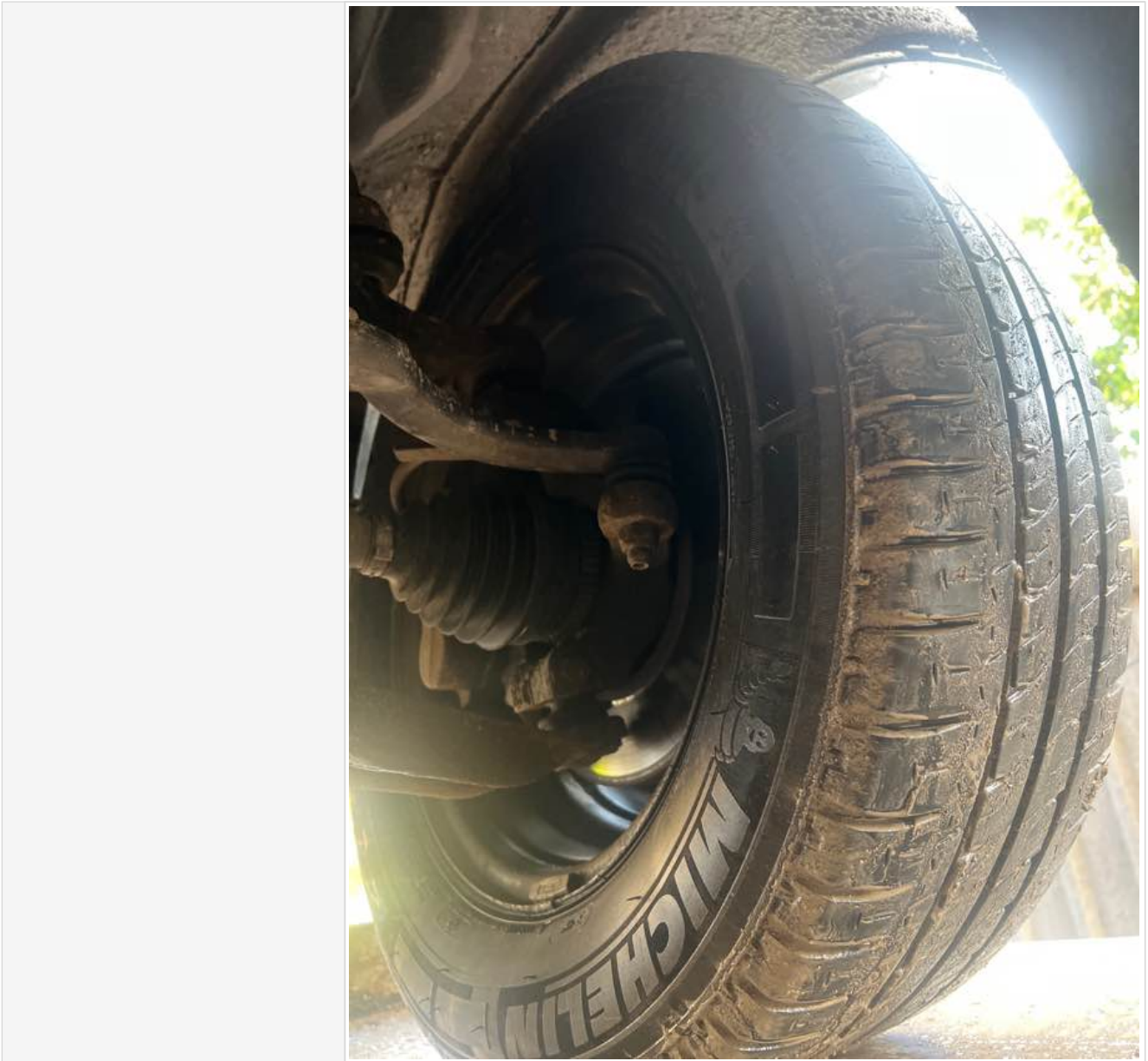
## Basevan.com General Inspection

Images of tyre





## Basevan.com General Inspection



### Near side front

Age (month/year) Manufactured	34/20
Make, brand.	Michelin
Tyre size	225/75/R16
Pressure 1	
Pressure 2	
Wearing / Perishing (inner)	none
Wearing / Perishing (outer)	None
tread depth (mm)	9
General comments	



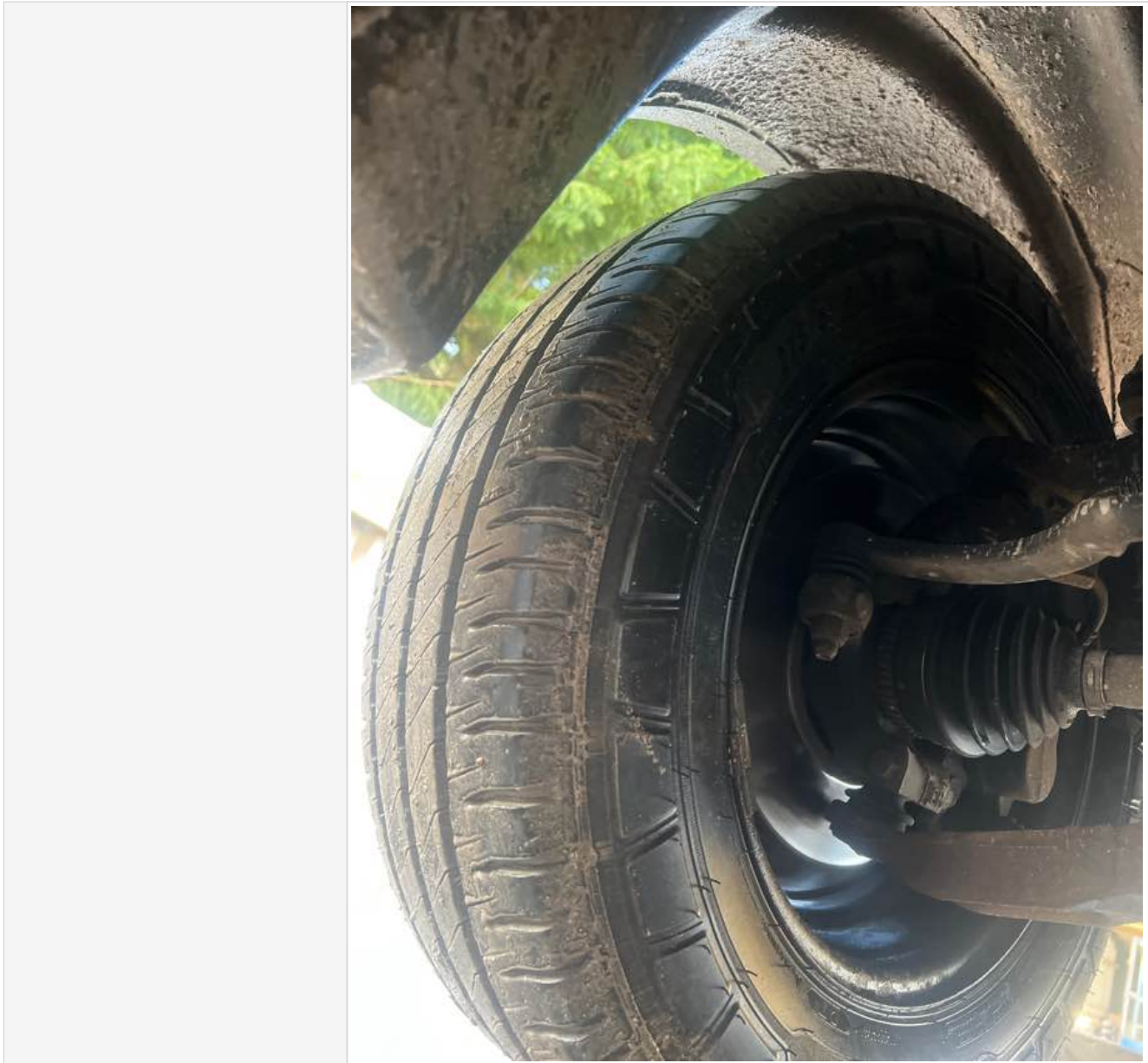
## Basevan.com General Inspection

Images of tyre





## Basevan.com General Inspection



### near side rear

Age (month/year) Manufactured	33/20
Make, brand.	Michelin
Tyre size	225/65/R16
Pressure 1	
Pressure 2	
Wearing / Perishing (inner)	none
Wearing / Perishing (outer)	None
tread depth (mm)	9
General comments	



## Basevan.com General Inspection

Images of tyre





## Basevan.com General Inspection



### Off side rear

Age (month/year) Manufactured	04/15
Make, brand.	Michelin
Tyre size	225/65/R16
Pressure 1	
Pressure 2	
Wearing / Perishing (inner)	Slight
Wearing / Perishing (outer)	None
tread depth (mm)	8
General comments	



## Basevan.com General Inspection

Images of tyre







## Basevan.com General Inspection



### off side Inner (for twin wheel vans)

Is the vehicle a twin wheel axle? (if no don't fill out)	No
Age (month/year) Manufactured	
Make, brand.	
Tyre size	
Pressure 1	
Pressure 2	
Wearing / Perishing (inner)	
Wearing / Perishing (outer)	



## Basevan.com General Inspection

tread depth (mm)	
General comments	
Images of tyre	

### near side Inner (for twin wheel vans)

Is the vehicle a twin wheel axle? (if no don't fill out)	No
Age (month/year) Manufactured	
Make, brand.	
Tyre size	
Pressure 1	
Pressure 2	
Wearing / Perishing (inner)	
Wearing / Perishing (outer)	
tread depth (mm)	
General comments	
Images of tyre	

### Spare wheel


Spare installed? (If no, don't fill out)	No
Age (month/year) Manufactured	
Make, brand.	
Tyre size	
Pressure 1	
Pressure 2	
Wearing / Perishing (inner)	
Wearing / Perishing (outer)	
tread depth (mm)	
General comments	
Images of tyre	

### Vehicle locking

Factory central locking fitted?	Yes
Response from key fob?	Yes
Response from in-cab locking button?	Yes
Do all the doors lock from central locking function?	



## Basevan.com General Inspection


Select the following doors that lock.	N/S Front, O/S Front, N/S SL, N/S Rear, O/S Rear
Method of locking	Key, Fob
In conclusion can all the doors be locked in some way and thus the vehicle can be left unattended at night safely?	Yes
How many keys present at time of inspection?	
Comment	

### In cab checks

Number of seats (cab only)	Driver & 1 passenger
Cab heater check	Works on all settings
Comment on cab heater	

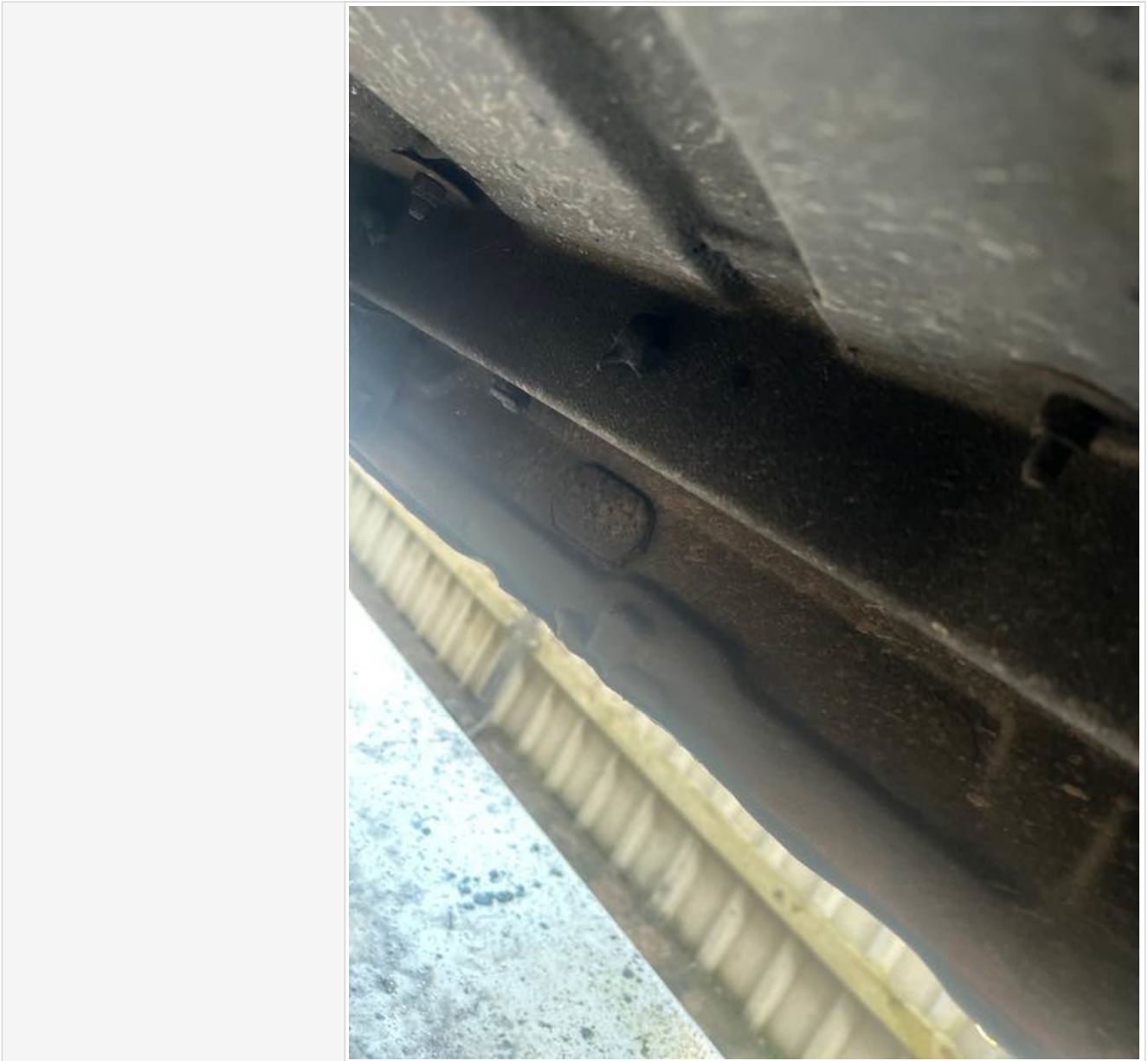


## Basevan.com General Inspection

Electric windows present	Yes
Cab windows function check	Driver side function, Passenger side function
Air conditioning present	No
Charging socket present (cigarette lighter)	Yes
Function working?	Yes
Radio / Media system fitted?	No
Radio / media system check	N/A not installed
Reverse camera present?	No
Reverse camera functioning?	N/A
Show any damage or missing items	

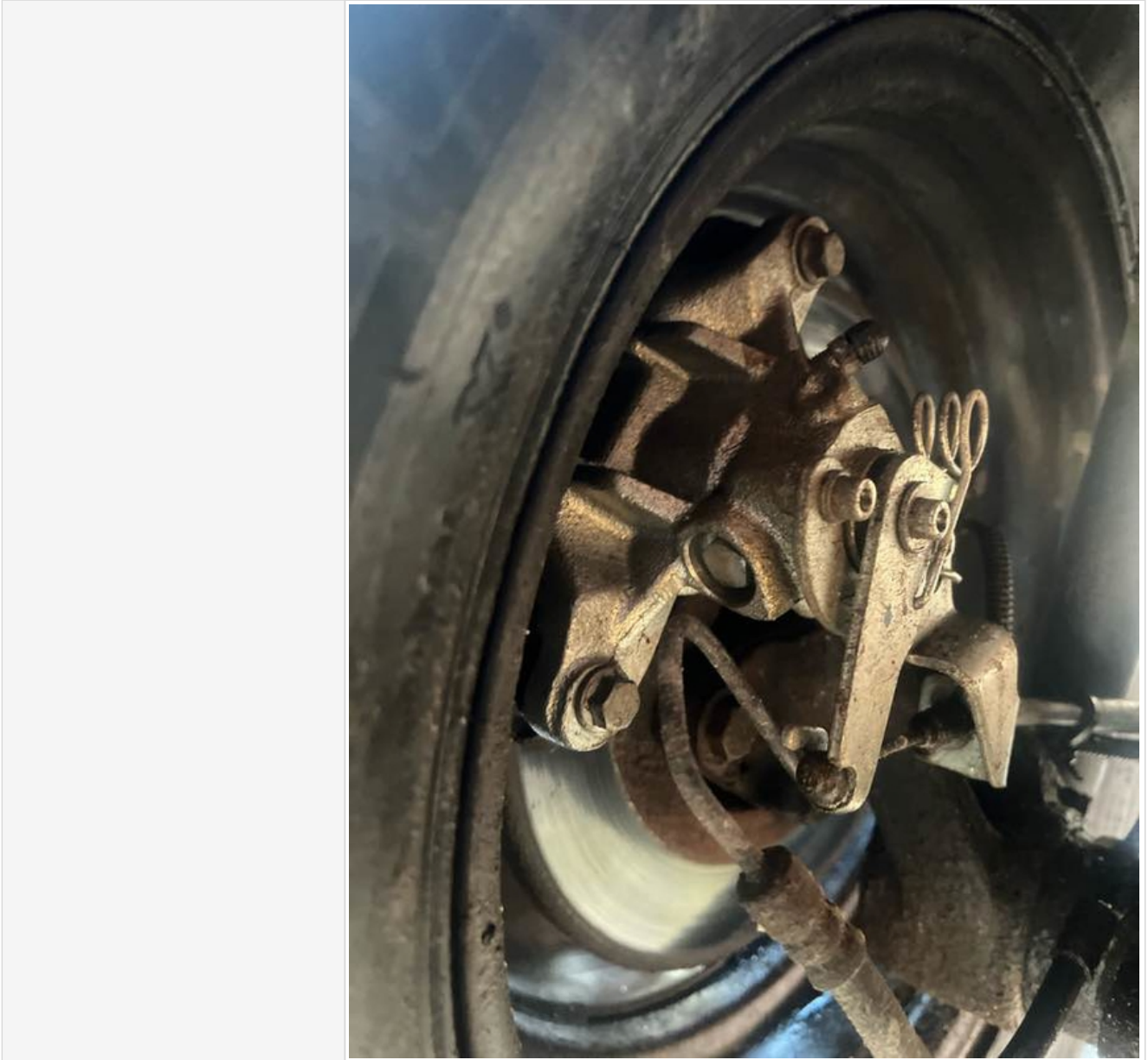


## Basevan.com General Inspection



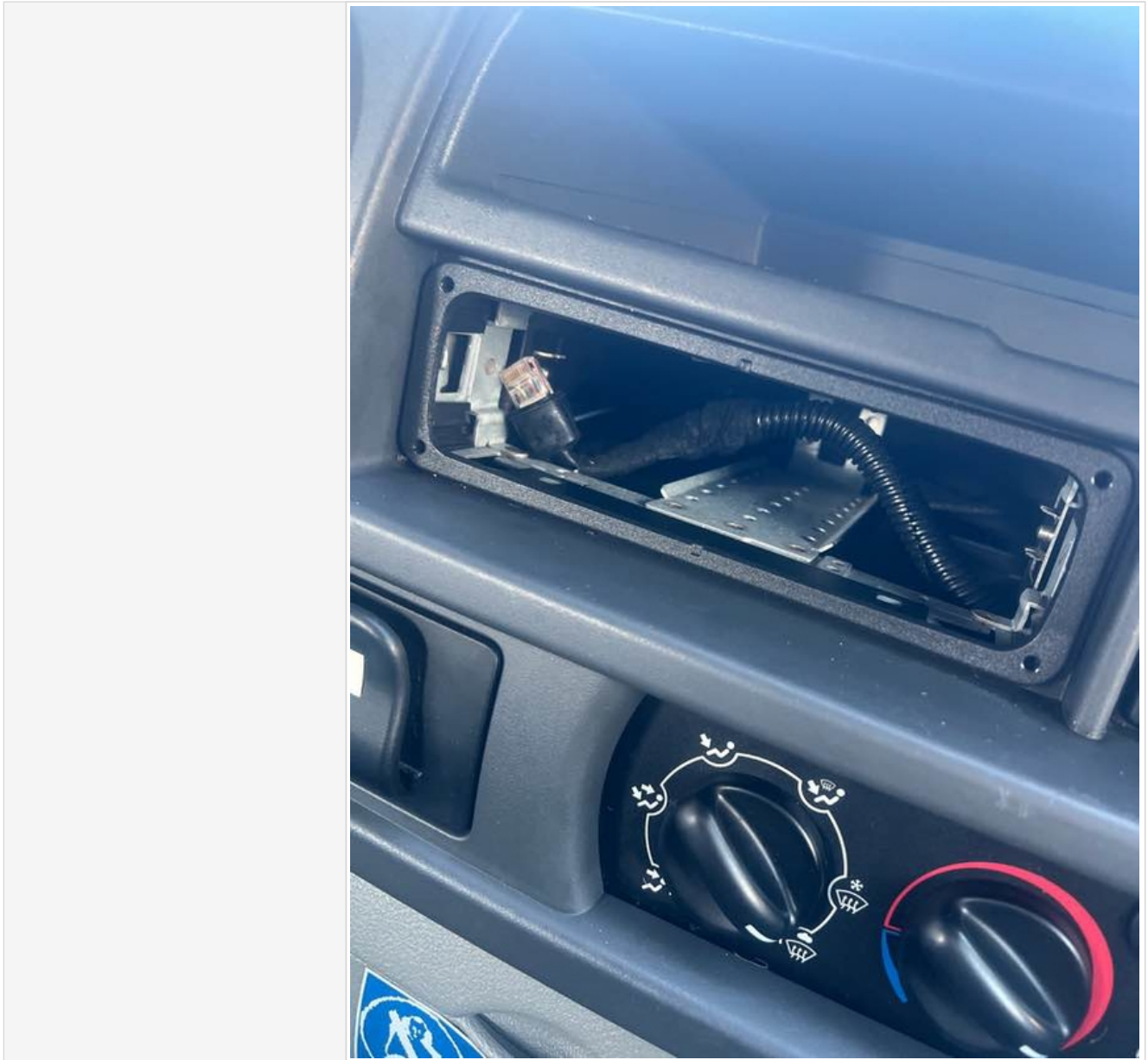


## Basevan.com General Inspection





## Basevan.com General Inspection





## Basevan.com General Inspection




### General mechanical checks

Fuel level	1/2 Full
Oil level	Medium
Oil conditon	Clean
Start up, chassis battery check	Started without jump pack
Start-up from cold	Instant
Exhaust smoke from cold	Normal
Output Voltage of Alternator test	13.7
Chain or Belt driven engine?	Chain
If belt any proof of change?	





## Basevan.com General Inspection

Coolant condition	Clean
Coolant level	Full
Anti-freeze temperature check	-17
Washer fluid	Full
Brake fluid	Full
Power steering fluid	Maximum
Dashboard warning light	No warning lights
OBD Scan results	
Engine bay photo	
Comment	