




Basevan.com General Inspection

Inspection details

Name of inspector	Franklyn T Bromfield
Date of inspection	16/01/2025
Signature	

Vehicle details

Vehicle registration	WX67EEA
Vehicle chassis no.	WDB9066552P514133
Miles (if in km, multiply by 0.62)	60,354
Make	Mercedes-Benz
Model	Sprinter 4x4
Transmission	Automatic
Factory immobiliser installed	Yes
Speed limiter installed	No
Drive configuration	AWD
Gross Vehicle Weight (kg)	5000
Towing capacity	2000kg
Tow bar installed	No

Off side front

Age (month/year) Manufactured	15/23
Make, brand.	Michelin
Tyre size	205/75/R16
Pressure 1	
Pressure 2	
Wearing / Perishing (inner)	none
Wearing / Perishing (outer)	None
tread depth (mm)	7
General comments	Top spec michelin tyre (Cross climate) great condition



Basevan.com General Inspection

Images of tyre



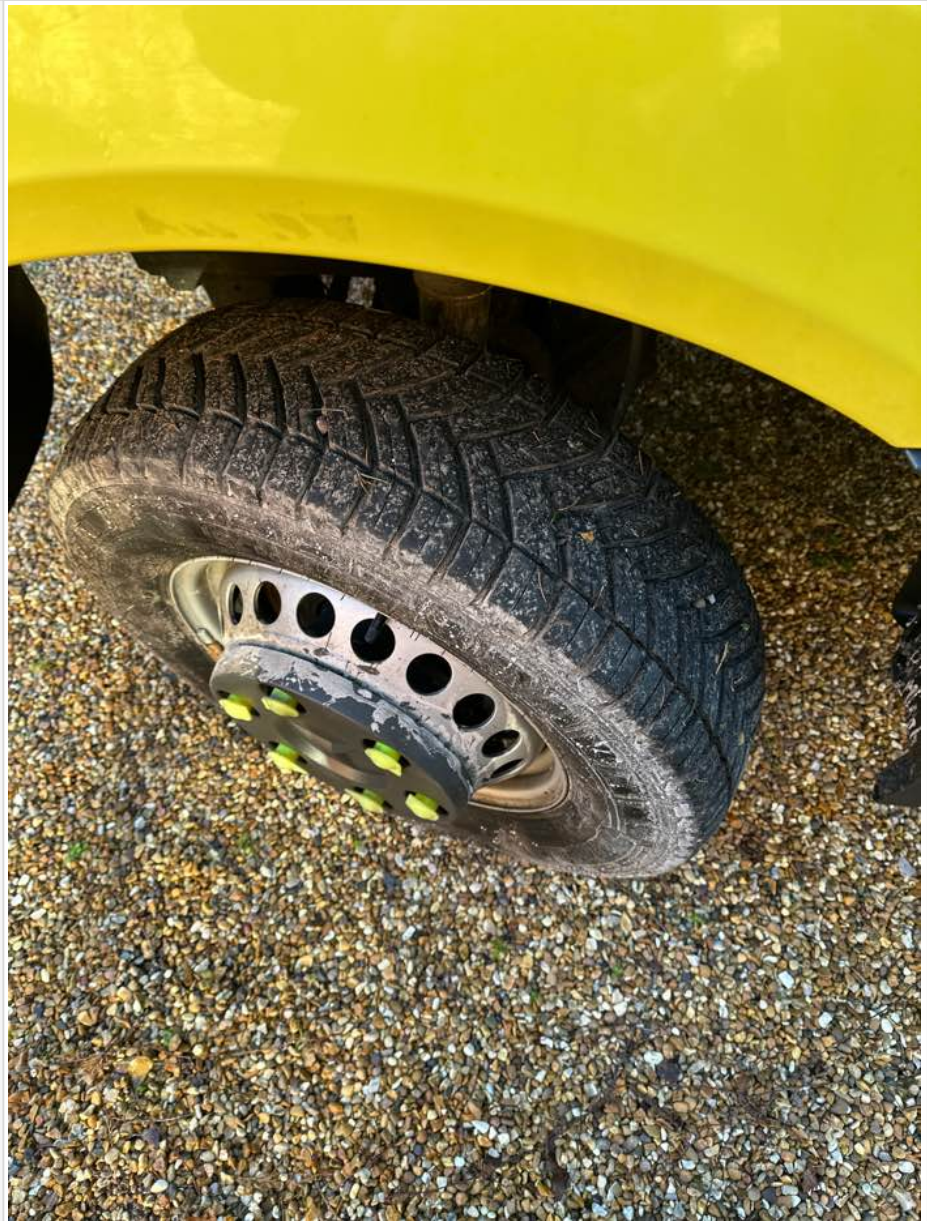
Near side front

Age (month/year) Manufactured	15/23
Make, brand.	Michelin
Tyre size	205/75/R16
Pressure 1	
Pressure 2	
Wearing / Perishing (inner)	none
Wearing / Perishing (outer)	None
tread depth (mm)	7
General comments	Top spec michelin tyre (Cross climate) great condition



Basevan.com General Inspection

Images of tyre



near side rear

Age (month/year) Manufactured	11/22
Make, brand.	Michelin
Tyre size	205/75/R16
Pressure 1	
Pressure 2	
Wearing / Perishing (inner)	none
Wearing / Perishing (outer)	None
tread depth (mm)	6
General comments	Top spec michelin tyre (Cross climate) great condition



Basevan.com General Inspection

Images of tyre



Off side rear

Age (month/year) Manufactured	11/22
Make, brand.	Michelin
Tyre size	205/75/R16
Pressure 1	
Pressure 2	
Wearing / Perishing (inner)	none
Wearing / Perishing (outer)	None
tread depth (mm)	6
General comments	Top spec michelin tyre (Cross climate) great condition



Basevan.com General Inspection

Images of tyre




off side Inner (for twin wheel vans)

Is the vehicle a twin wheel axle? (if no don't fill out)	Yes
Age (month/year) Manufactured	15/22
Make, brand.	Michelin
Tyre size	205/75/R16
Pressure 1	
Pressure 2	
Wearing / Perishing (inner)	none
Wearing / Perishing (outer)	None



Basevan.com General Inspection

tread depth (mm)	6
General comments	Top spec michelin tyre (Cross climate) great condition
Images of tyre	

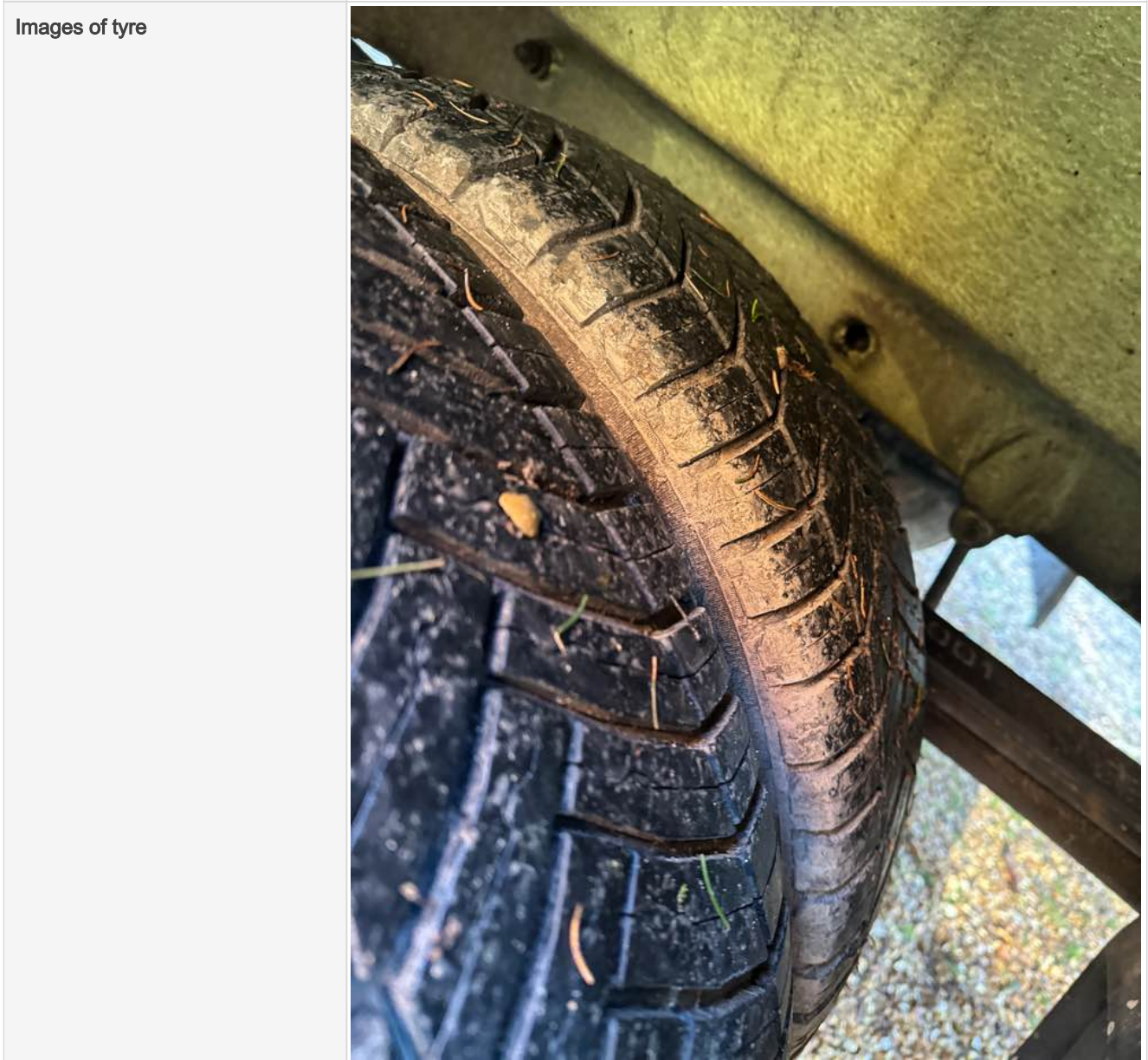
near side Inner (for twin wheel vans)

Is the vehicle a twin wheel axle? (if no don't fill out)	Yes
Age (month/year) Manufactured	15/22
Make, brand.	Michelin
Tyre size	205/75/R16
Pressure 1	
Pressure 2	



Basevan.com General Inspection

Wearing / Perishing (inner)	none
Wearing / Perishing (outer)	None
tread depth (mm)	6
General comments	Top spec michelin tyre (Cross climate) great condition



Spare wheel

Spare installed? (If no, don't fill out)	No
Age (month/year) Manufactured	
Make, brand.	
Tyre size	



Basevan.com General Inspection

Pressure 1	
Pressure 2	
Wearing / Perishing (inner)	
Wearing / Perishing (outer)	
tread depth (mm)	
General comments	
Images of tyre	

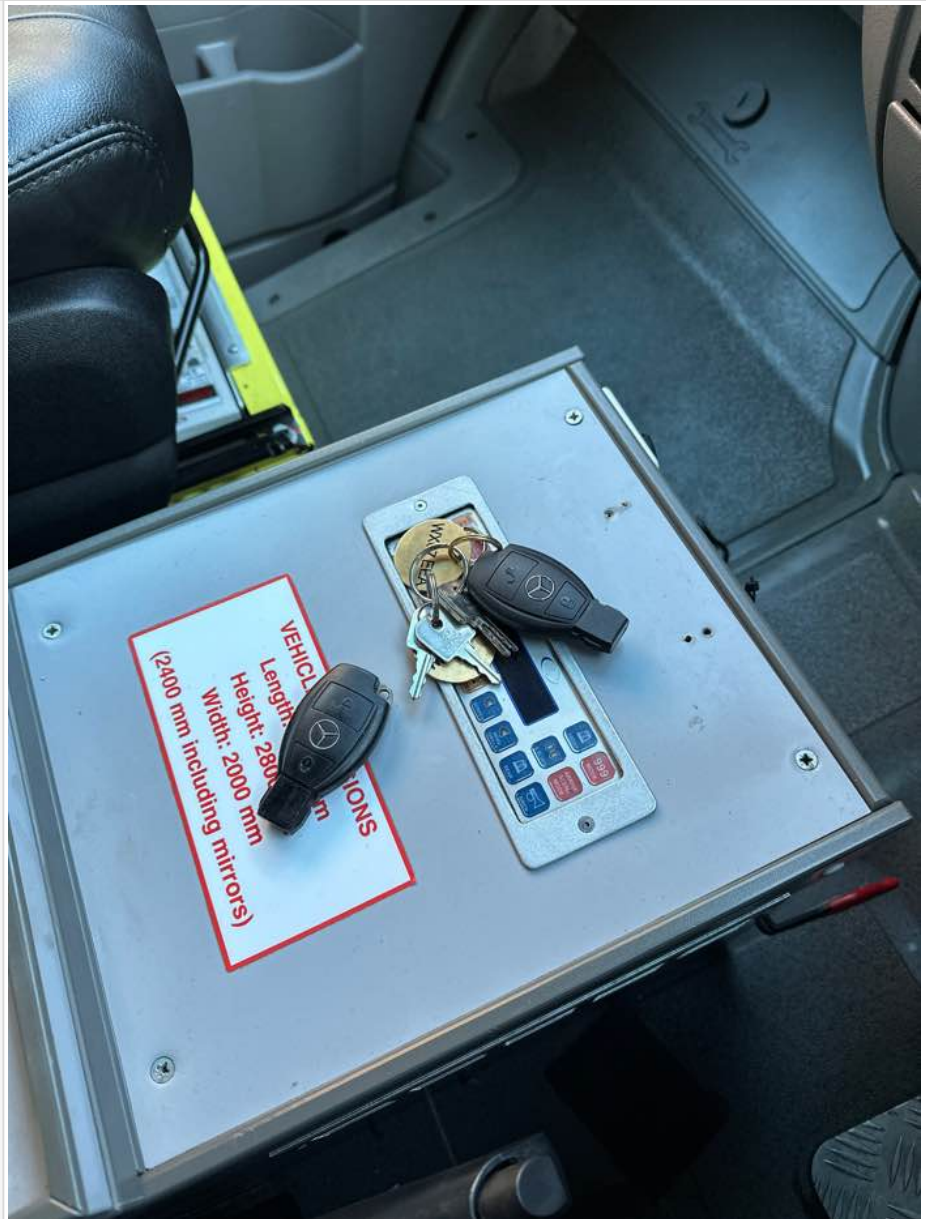
Vehicle locking

Factory central locking fitted?	Yes
Response from key fob?	Yes
Response from in-cab locking button?	Yes
Do all the doors lock from central locking function?	All
Select the following doors that lock.	N/S Front, O/S Front, N/S SL, N/S Rear, O/S Rear
Method of locking	Fob
In conclusion can all the doors be locked in some way and thus the vehicle can be left unattended at night safely?	Yes



Basevan.com General Inspection

How many keys present at time of inspection?



Comment

works as should

In cab checks

Number of seats (cab only)	Driver only
Cab heater check	Works on all settings
Comment on cab heater	Functions + A/C
Electric windows present	Yes
Cab windows function check	Driver side function, Passenger side function
Air conditioning present	Yes
Charging socket present (cigarette lighter)	Yes



Basevan.com General Inspection

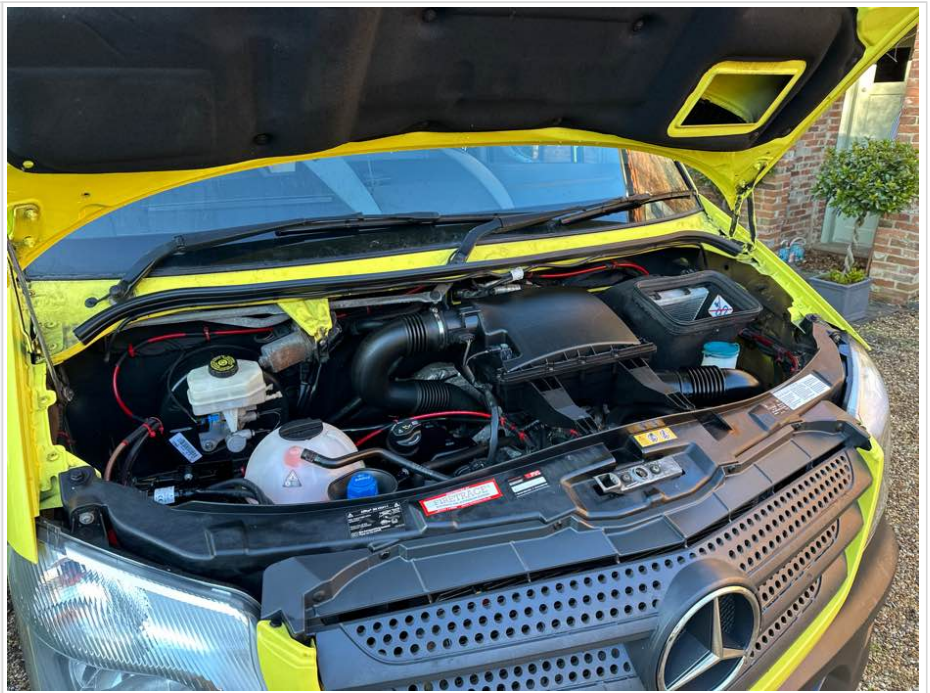
Function working?	Yes
Radio / Media system fitted?	Yes
Radio / media system check	Functions
Reverse camera present?	No
Reverse camera functioning?	N/A
Show any damage or missing items	

General mechanical checks

Fuel level	1/2 Full
Oil level	Low
Oil conditon	Clean
Start up, chassis battery check	Started without jump pack, Chassis battery new
Start-up from cold	Instant
Exhaust smoke from cold	Normal
Output Voltage of Alternator test	13.7
Chain or Belt driven engine?	Chain
If belt any proof of change?	N/A
Coolant condition	Clean
Coolant level	Full
Anti-freeze temperature check	-16
Washer fluid	Full
Brake fluid	Full
Power steering fluid	N/A
Dashboard warning light	No warning lights
OBD Scan results	



Basevan.com General Inspection

<p>Engine bay photo</p>	
<p>Comment</p>	<p>PERFECT VAN!</p>