




## Basevan.com General Inspection

### Inspection details

Name of inspector	Rupert Beeston
Date of inspection	26/01/2025
Signature	

### Vehicle details

Vehicle registration	GN08OTA
Vehicle chassis no.	WV1ZZZ2EZ86024141
Miles (if in km, multiply by 0.62)	128,595
Make	VW
Model	Crafter CR50 2.5 MANUAL LWB
Transmission	6 speed
Factory immobiliser installed	Yes
Speed limiter installed	No
Drive configuration	RWD
Gross Vehicle Weight (kg)	5000
Towing capacity	2000
Tow bar installed	No

### Off side front

Age (month/year) Manufactured	14/23
Make, brand.	Good Year
Tyre size	195/75/R16
Pressure 1	
Pressure 2	
Wearing / Perishing (inner)	none
Wearing / Perishing (outer)	None
tread depth (mm)	8
General comments	Like new



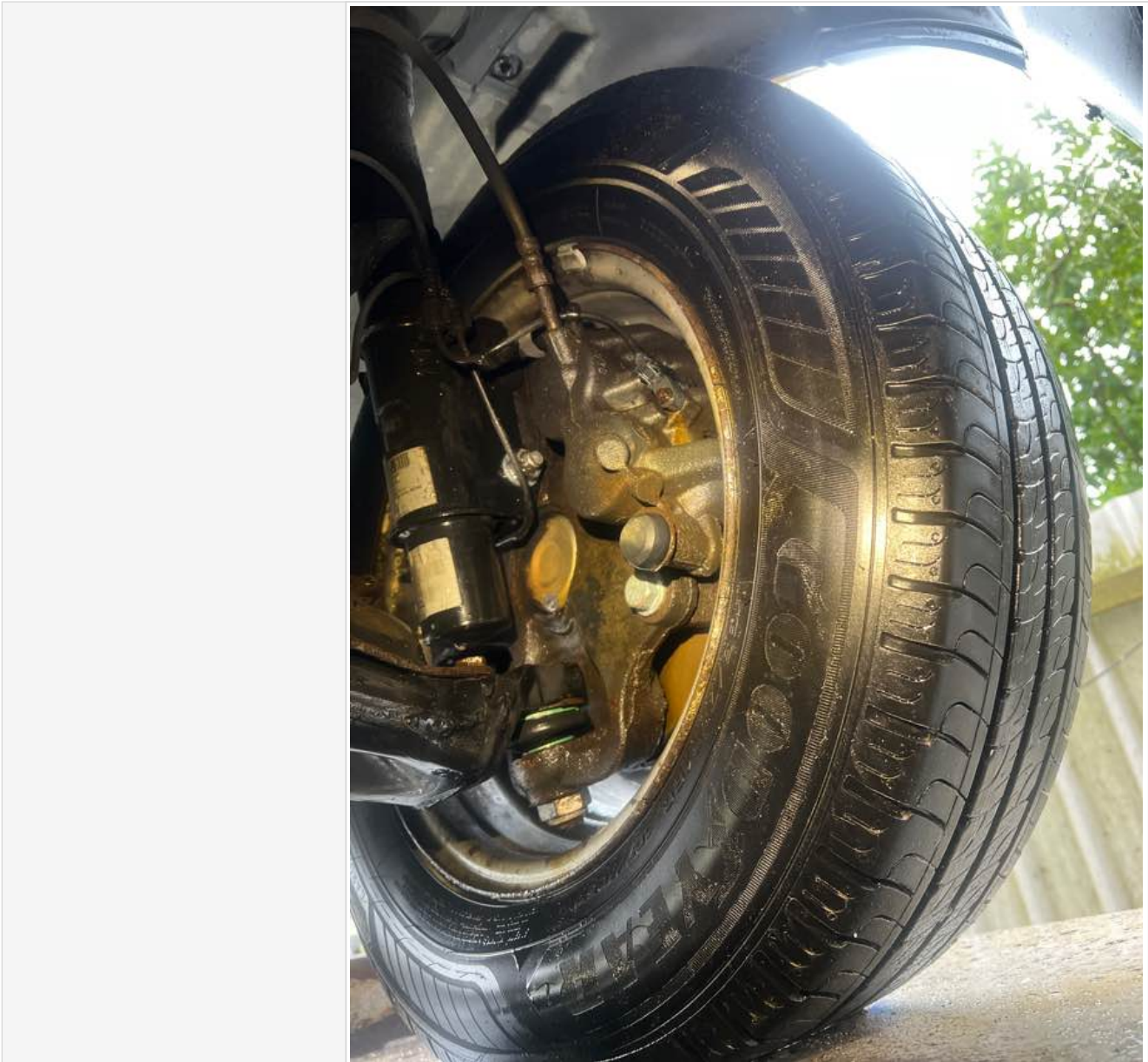
## Basevan.com General Inspection

Images of tyre





## Basevan.com General Inspection



### Near side front

Age (month/year) Manufactured	14/23
Make, brand.	Good Year
Tyre size	195/75/R16
Pressure 1	
Pressure 2	
Wearing / Perishing (inner)	none
Wearing / Perishing (outer)	None
tread depth (mm)	8
General comments	





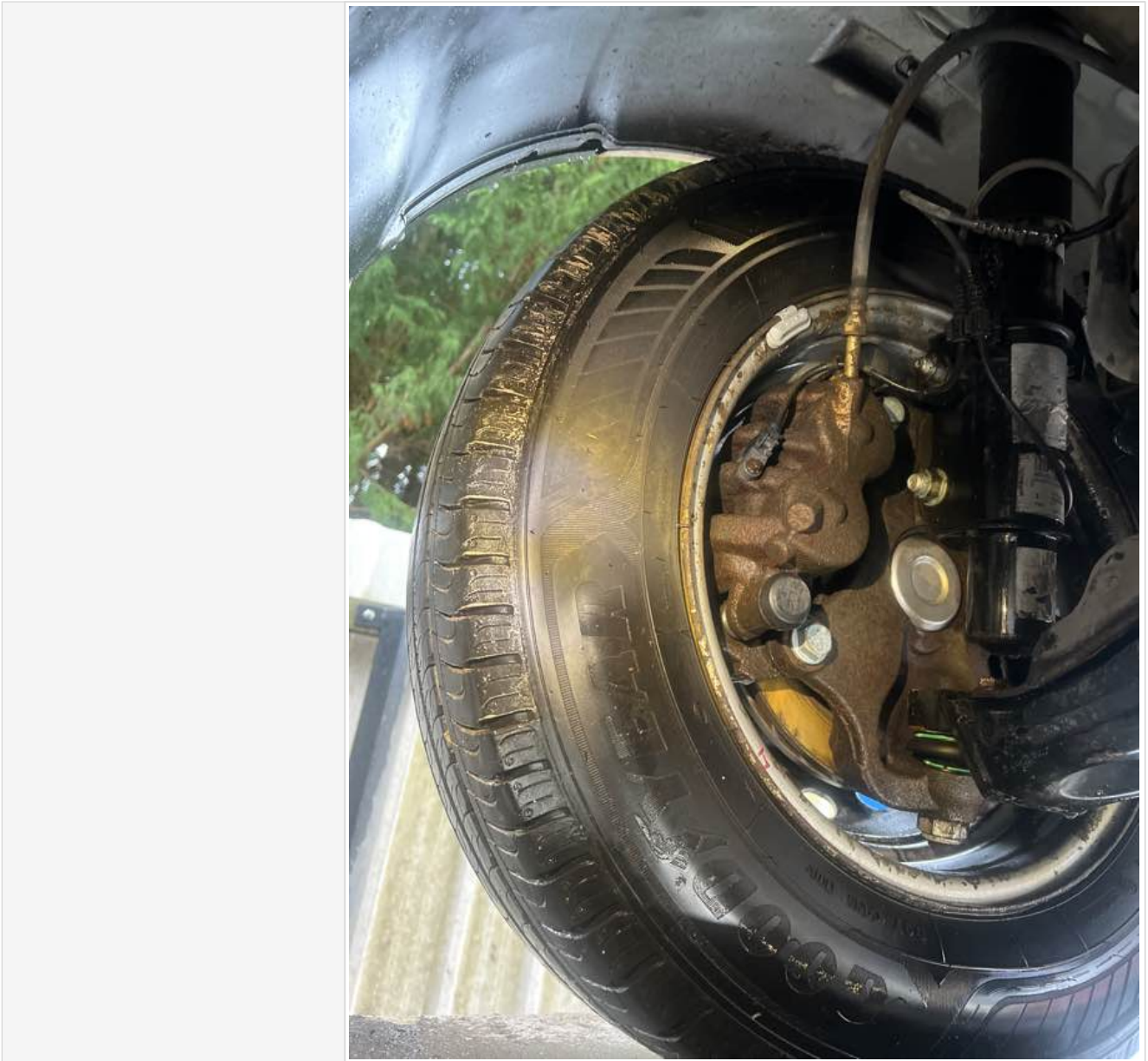
## Basevan.com General Inspection

Images of tyre





## Basevan.com General Inspection



### near side rear

Age (month/year) Manufactured	14/23
Make, brand.	Good Year
Tyre size	195/75/R16
Pressure 1	
Pressure 2	
Wearing / Perishing (inner)	none
Wearing / Perishing (outer)	None
tread depth (mm)	8
General comments	



## Basevan.com General Inspection

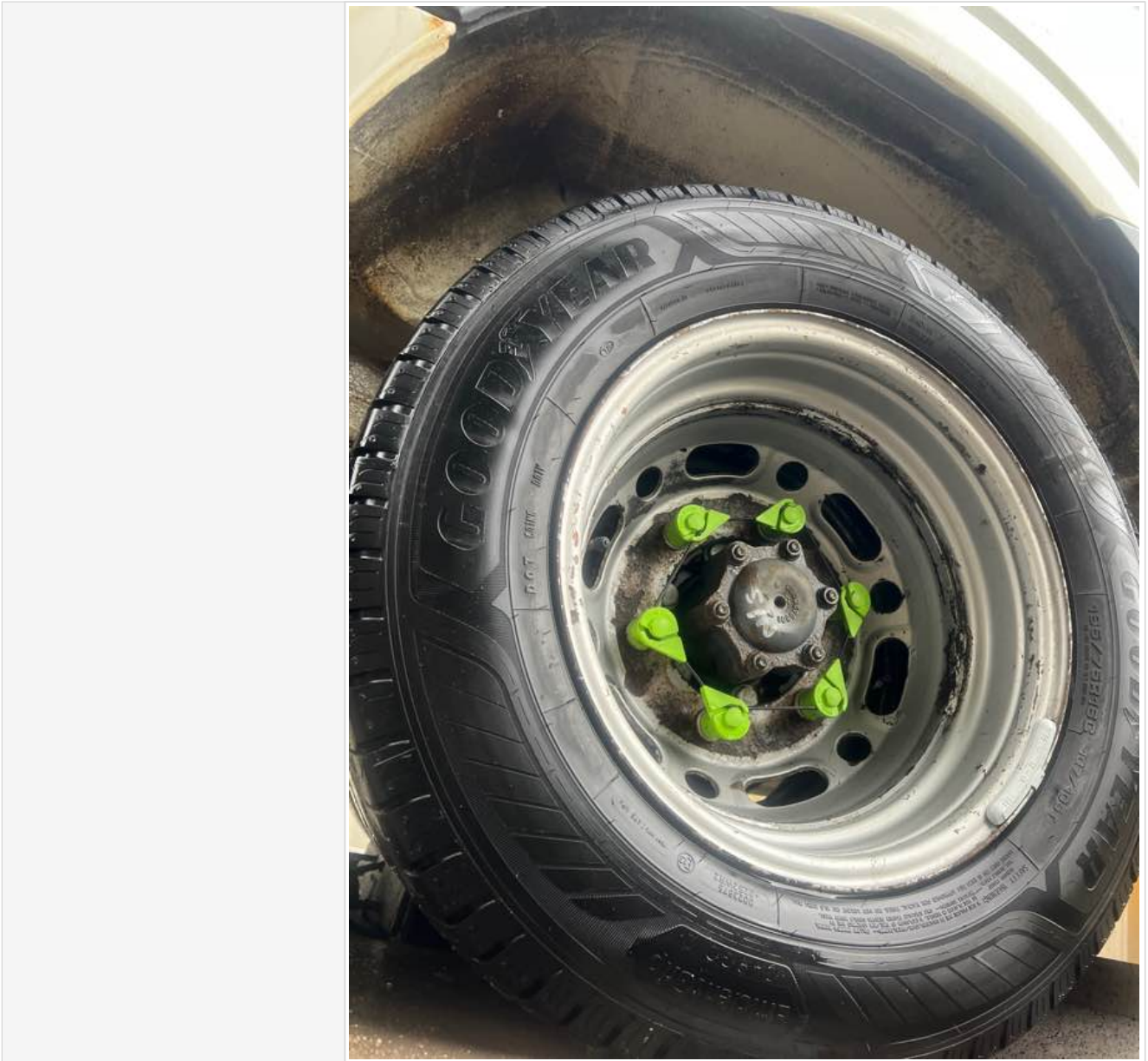
Images of tyre







## Basevan.com General Inspection



### Off side rear

Age (month/year) Manufactured	
Make, brand.	Good Year
Tyre size	195/75/R16
Pressure 1	
Pressure 2	
Wearing / Perishing (inner)	none
Wearing / Perishing (outer)	None
tread depth (mm)	8
General comments	



## Basevan.com General Inspection

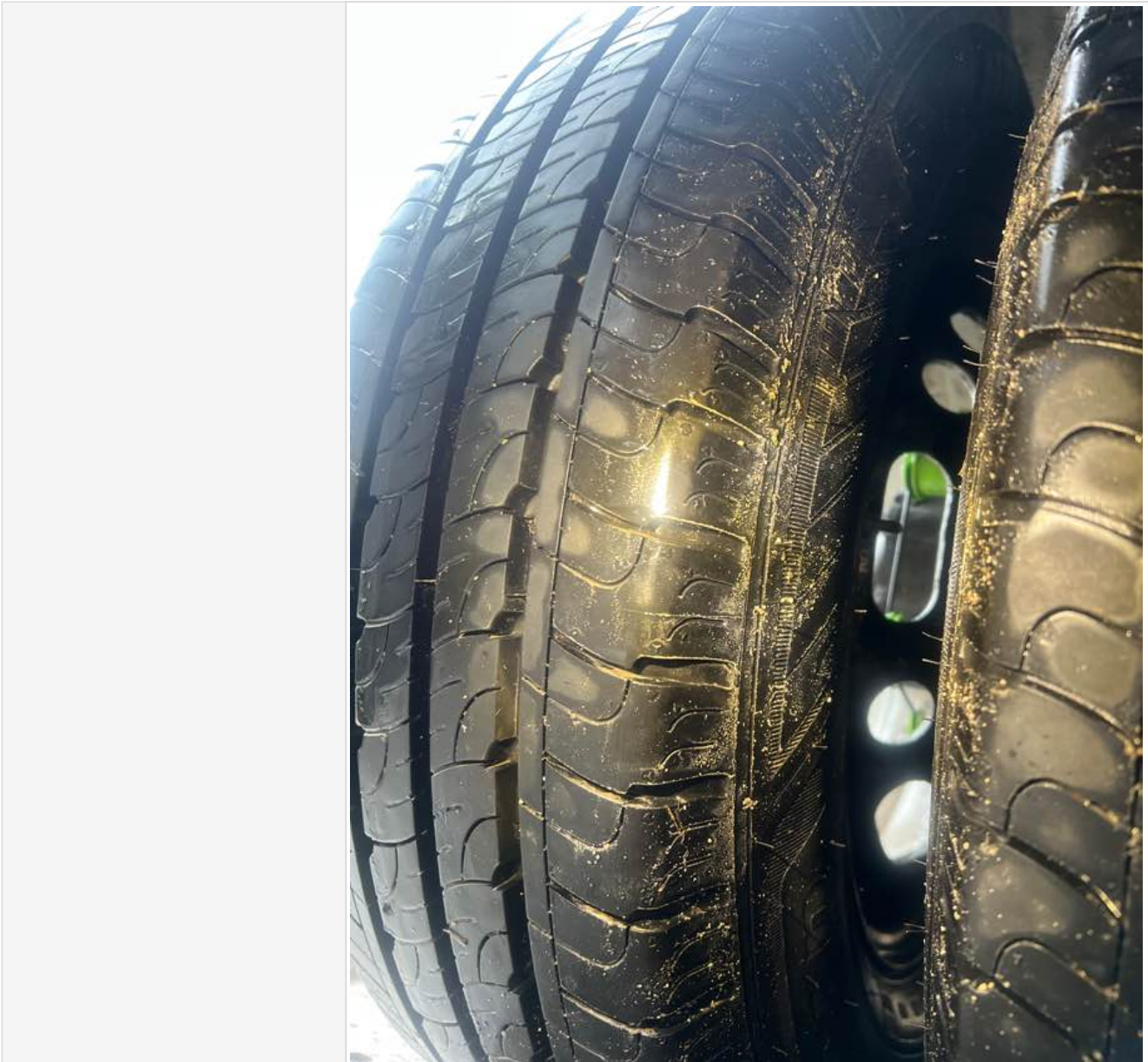
Images of tyre







## Basevan.com General Inspection




### off side Inner (for twin wheel vans)

Is the vehicle a twin wheel axle? (if no don't fill out)	
Age (month/year) Manufactured	
Make, brand.	Good Year
Tyre size	195/75/R16
Pressure 1	
Pressure 2	
Wearing / Perishing (inner)	none
Wearing / Perishing (outer)	None



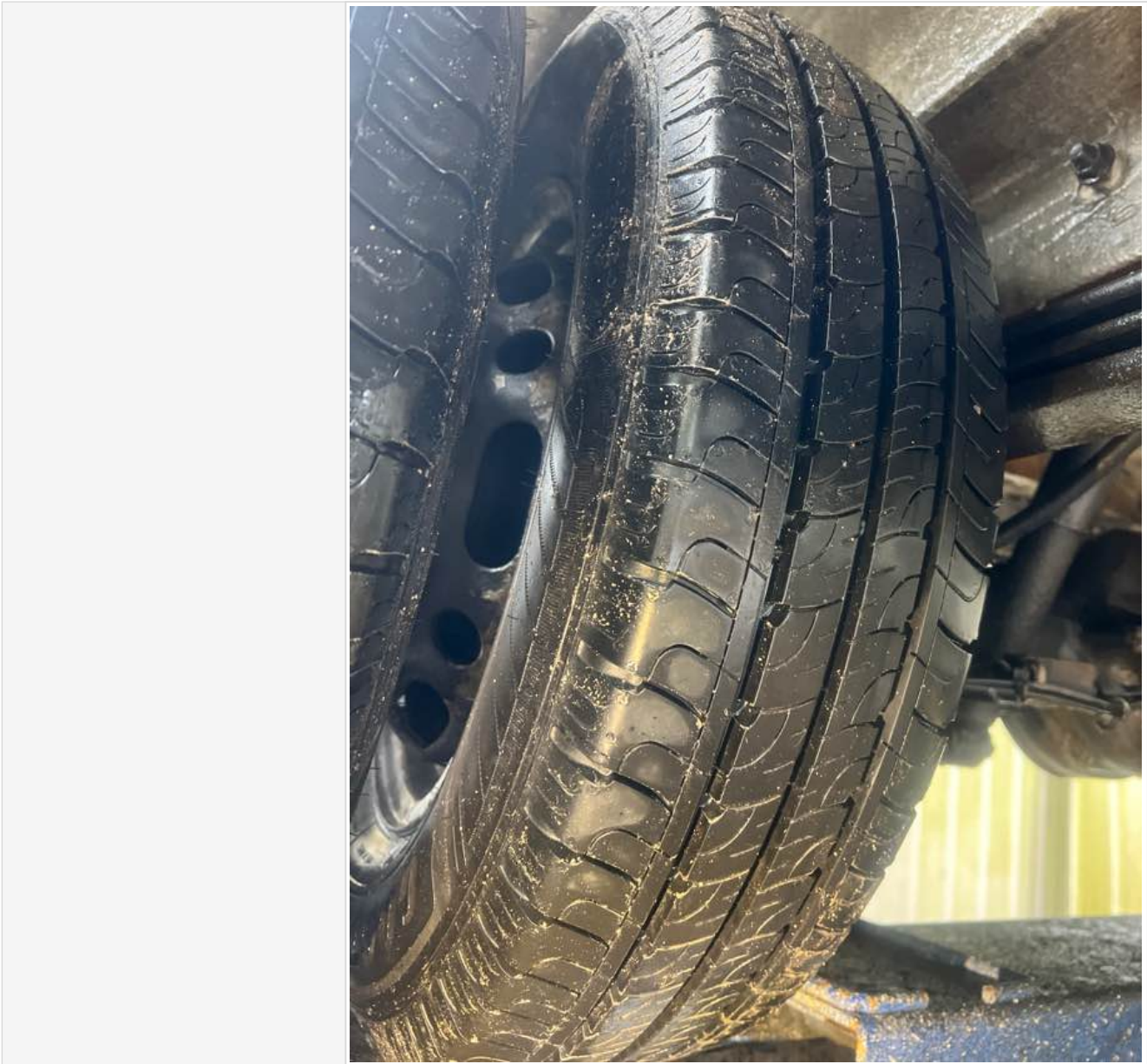
## Basevan.com General Inspection

tread depth (mm)	8
General comments	
Images of tyre	





## Basevan.com General Inspection




### near side Inner (for twin wheel vans)

Is the vehicle a twin wheel axle? (if no don't fill out)	Yes
Age (month/year) Manufactured	11/24
Make, brand.	Good Year
Tyre size	195/75/R16
Pressure 1	
Pressure 2	
Wearing / Perishing (inner)	none
Wearing / Perishing (outer)	None



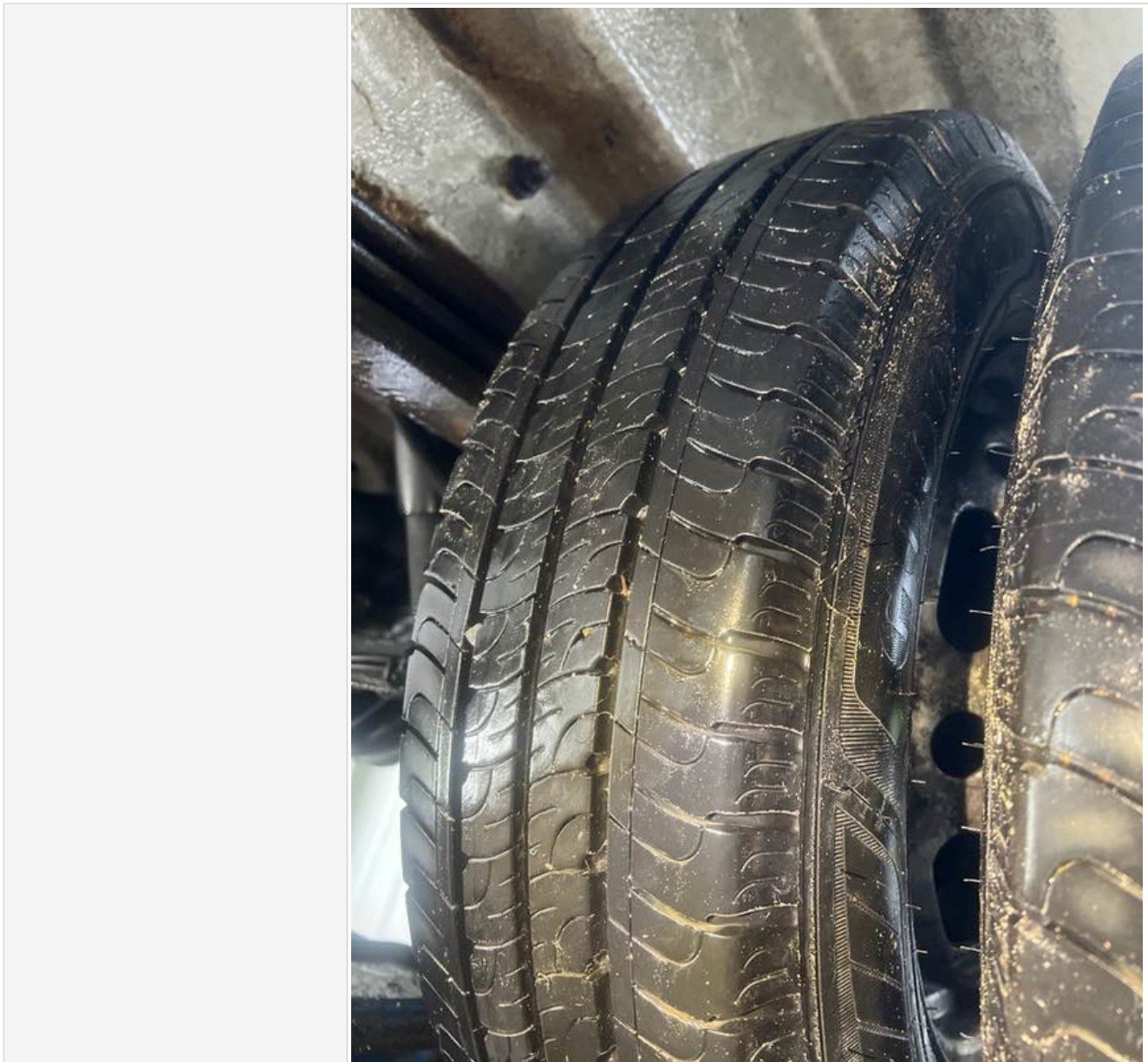


## Basevan.com General Inspection

tread depth (mm)	8
General comments	
Images of tyre	



## Basevan.com General Inspection



### Spare wheel

Spare installed? (If no, don't fill out)	No
Age (month/year) Manufactured	
Make, brand.	
Tyre size	
Pressure 1	
Pressure 2	
Wearing / Perishing (inner)	
Wearing / Perishing (outer)	



## Basevan.com General Inspection

tread depth (mm)	
General comments	
Images of tyre	

### Vehicle locking

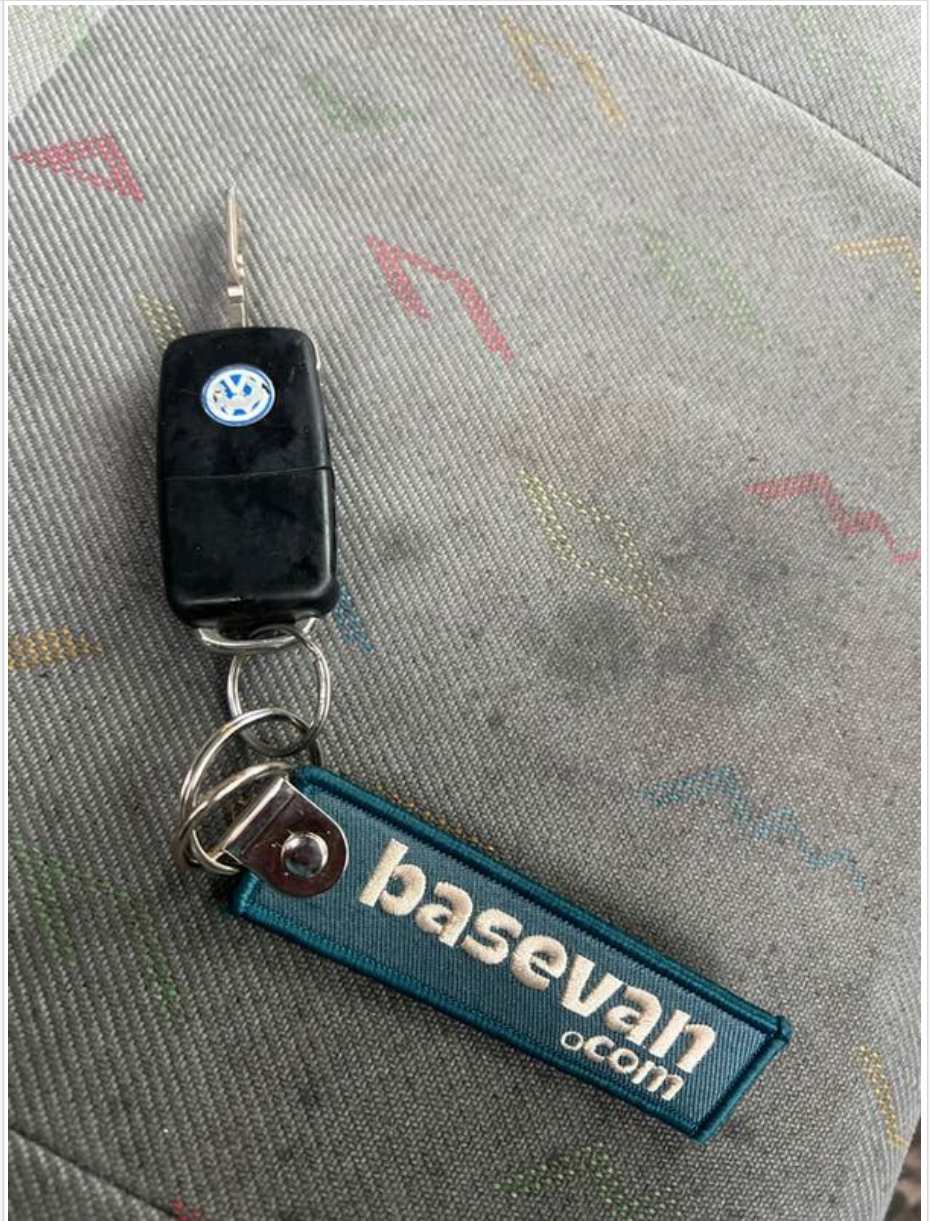
Factory central locking fitted?	Yes
Response from key fob?	Yes
Response from in-cab locking button?	Yes
Do all the doors lock from central locking function?	All
Select the following doors that lock.	N/S Front, O/S Front, N/S SL, N/S Rear, O/S Rear
Method of locking	Fob, Key
In conclusion can all the doors be locked in some way and thus the vehicle can be left unattended at night safely?	Yes





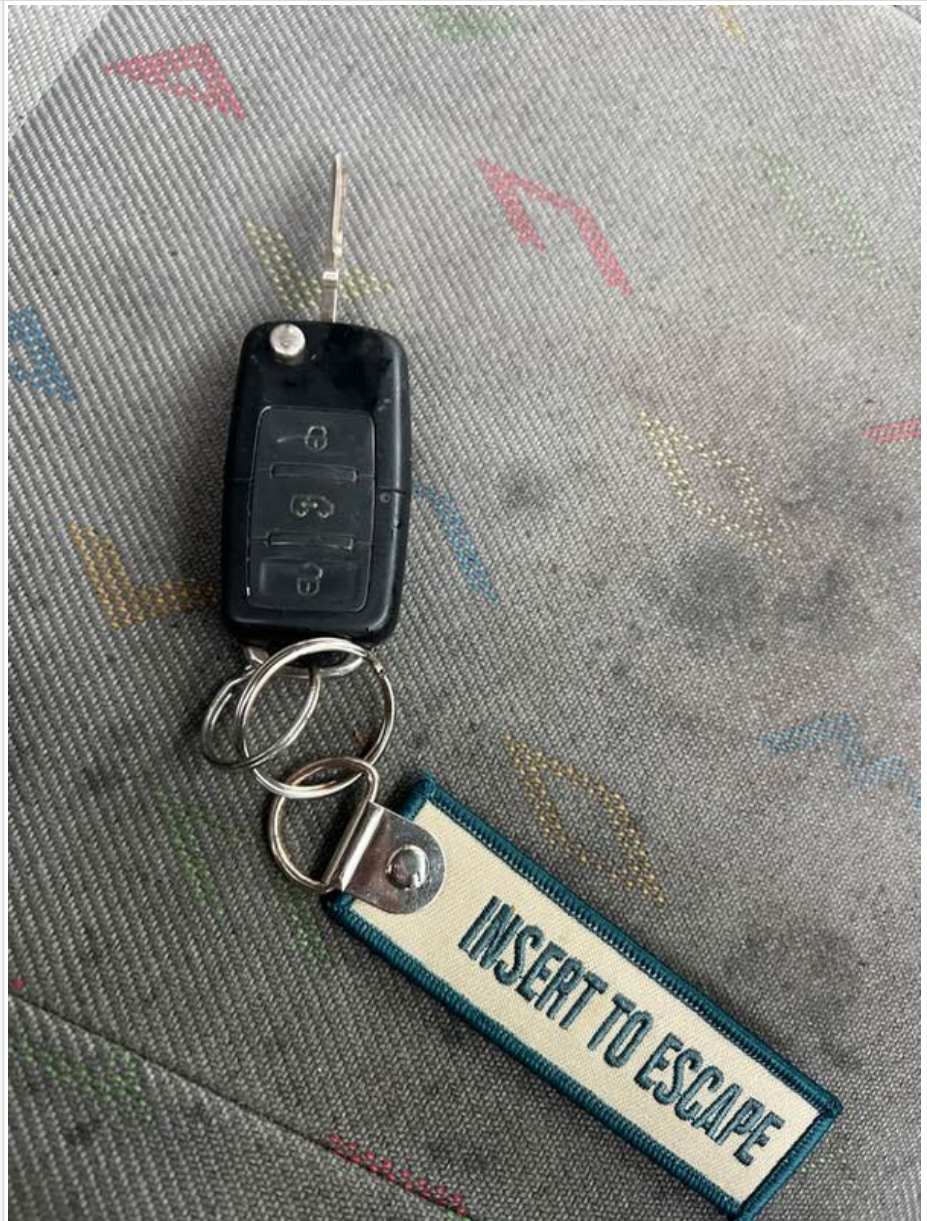
## Basevan.com General Inspection

How many keys present at time of inspection?





## Basevan.com General Inspection



Comment	1 key good condition
---------	----------------------


### In cab checks

Number of seats (cab only)	Driver & 1 passenger
Cab heater check	Works only on max
Comment on cab heater	
Electric windows present	Yes
Cab windows function check	Driver side function, Passenger side function
Air conditioning present	No
Charging socket present (cigarette lighter)	Yes





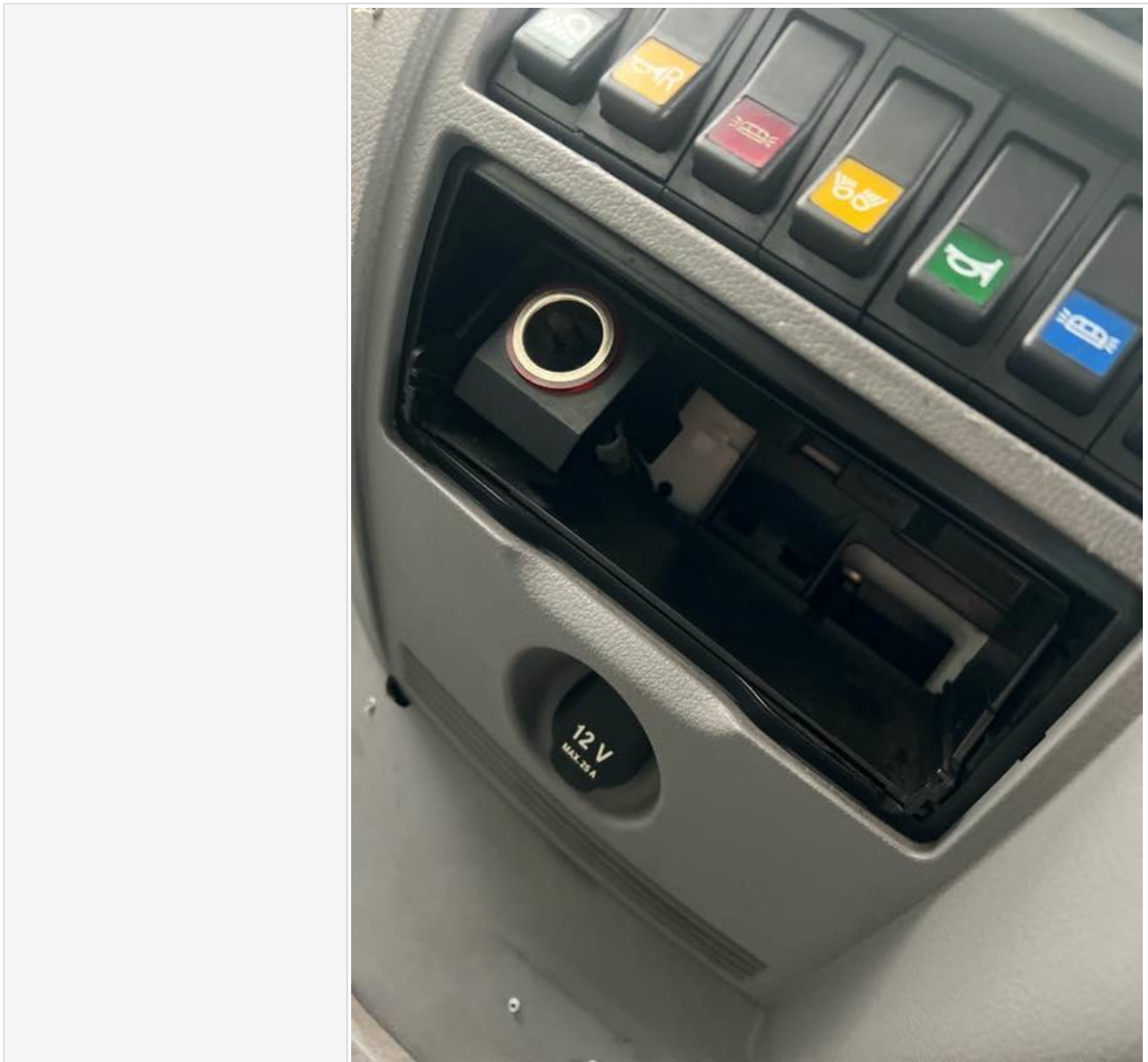
## Basevan.com General Inspection

Function working?	Yes
Radio / Media system fitted?	Yes
Radio / media system check	Functions
Reverse camera present?	No
Reverse camera functioning?	N/A
Show any damage or missing items	





## Basevan.com General Inspection





## Basevan.com General Inspection





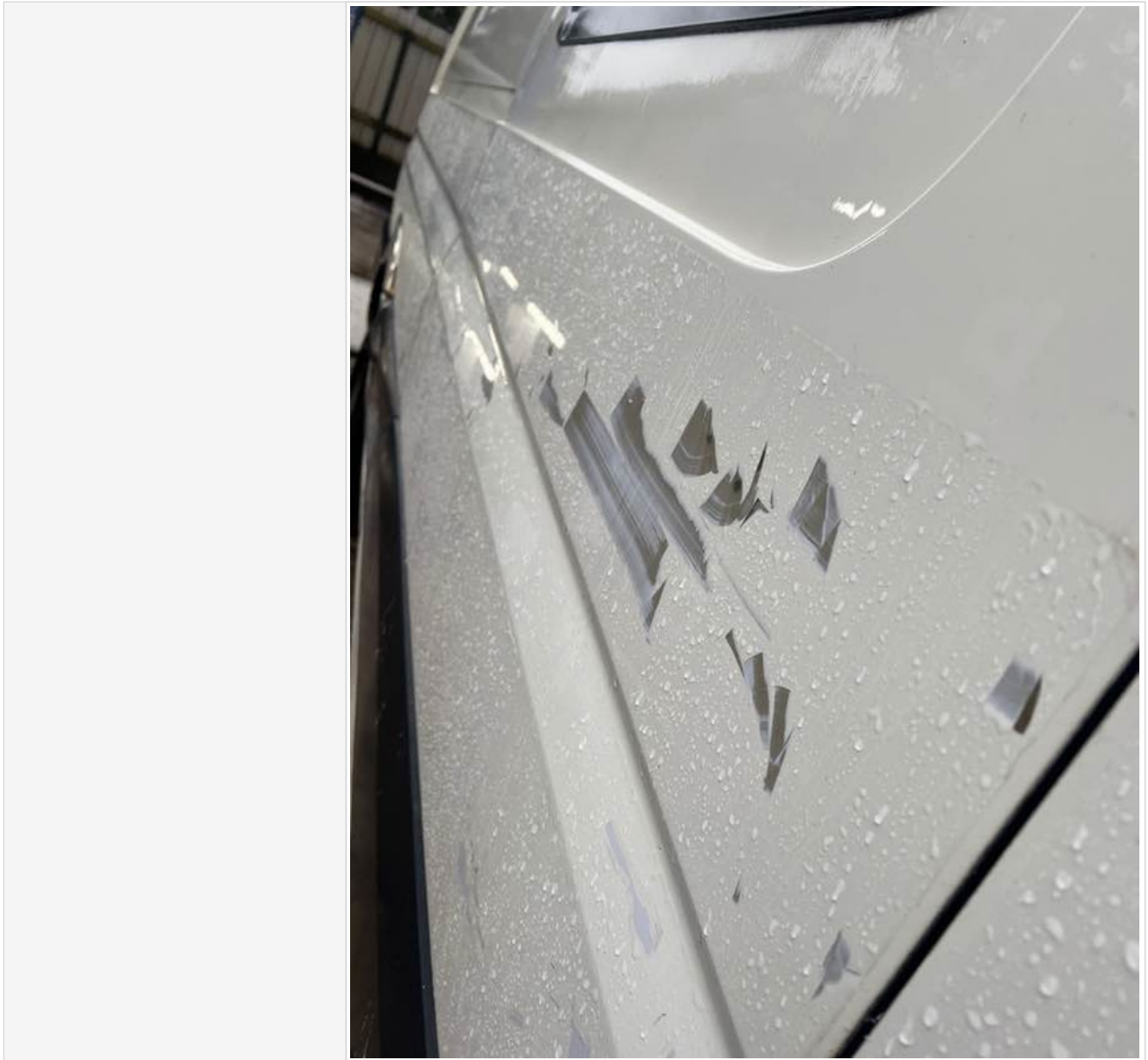


## Basevan.com General Inspection





## Basevan.com General Inspection







## Basevan.com General Inspection





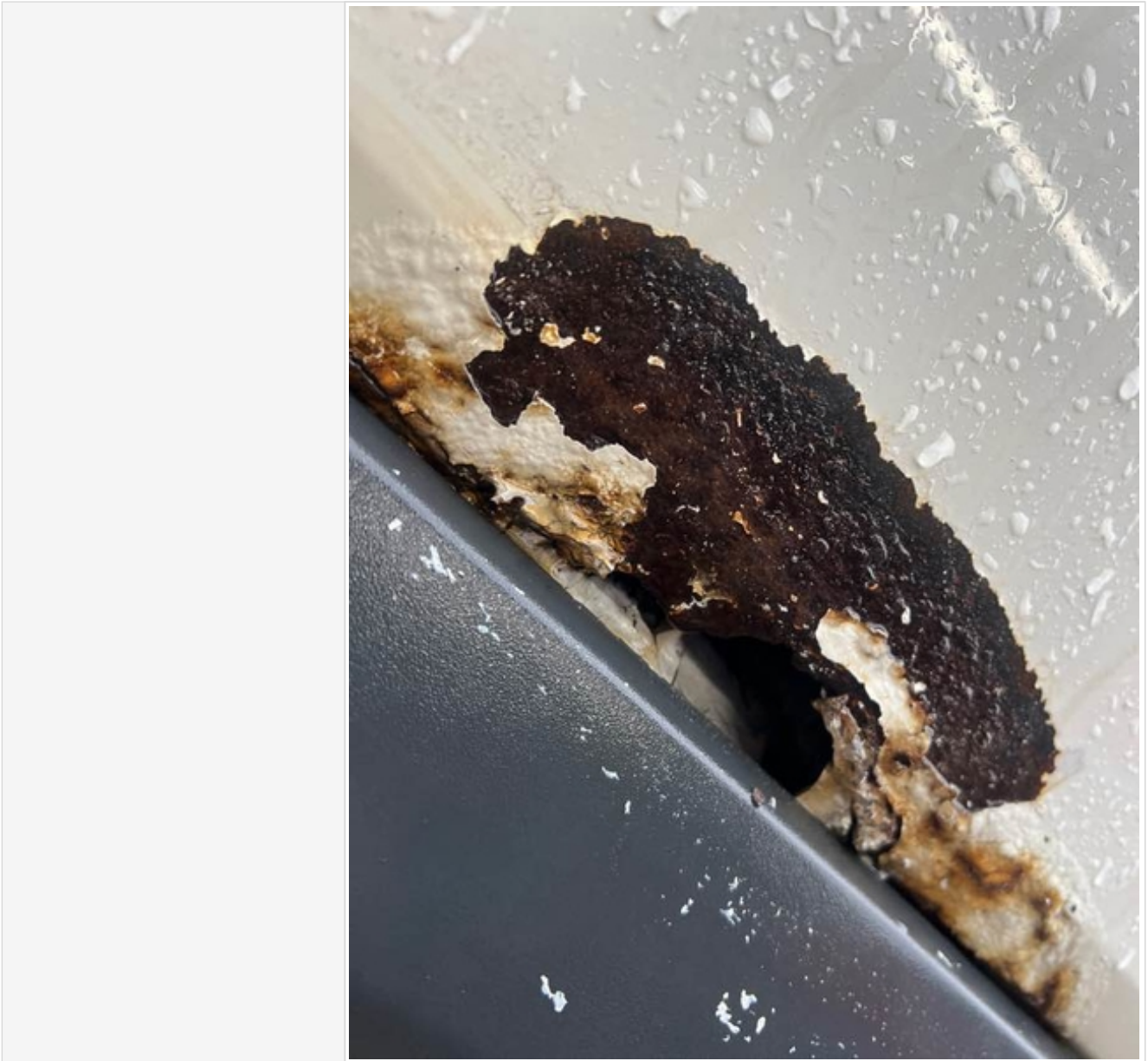
## Basevan.com General Inspection







## Basevan.com General Inspection



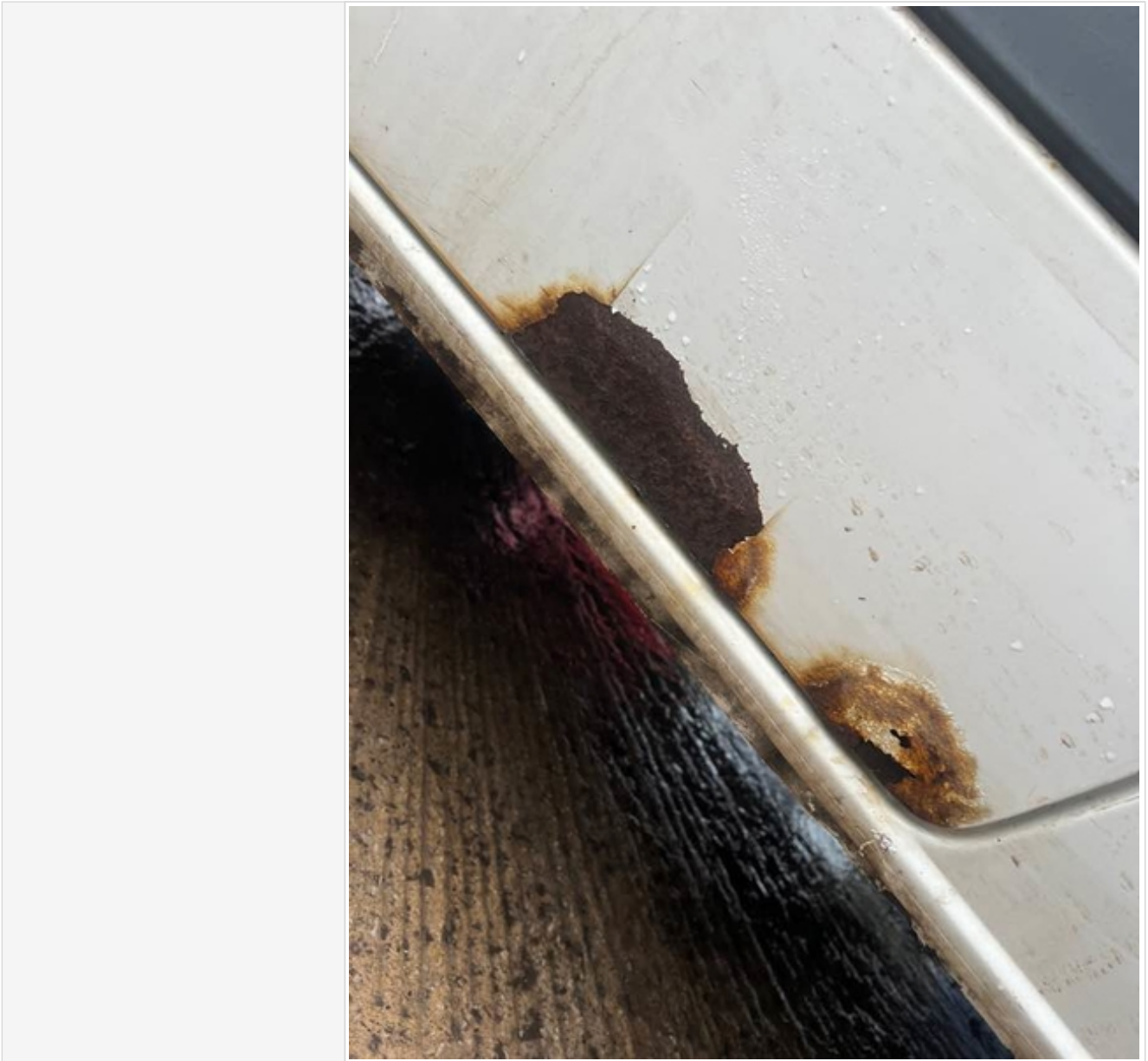


## Basevan.com General Inspection





## Basevan.com General Inspection







## Basevan.com General Inspection



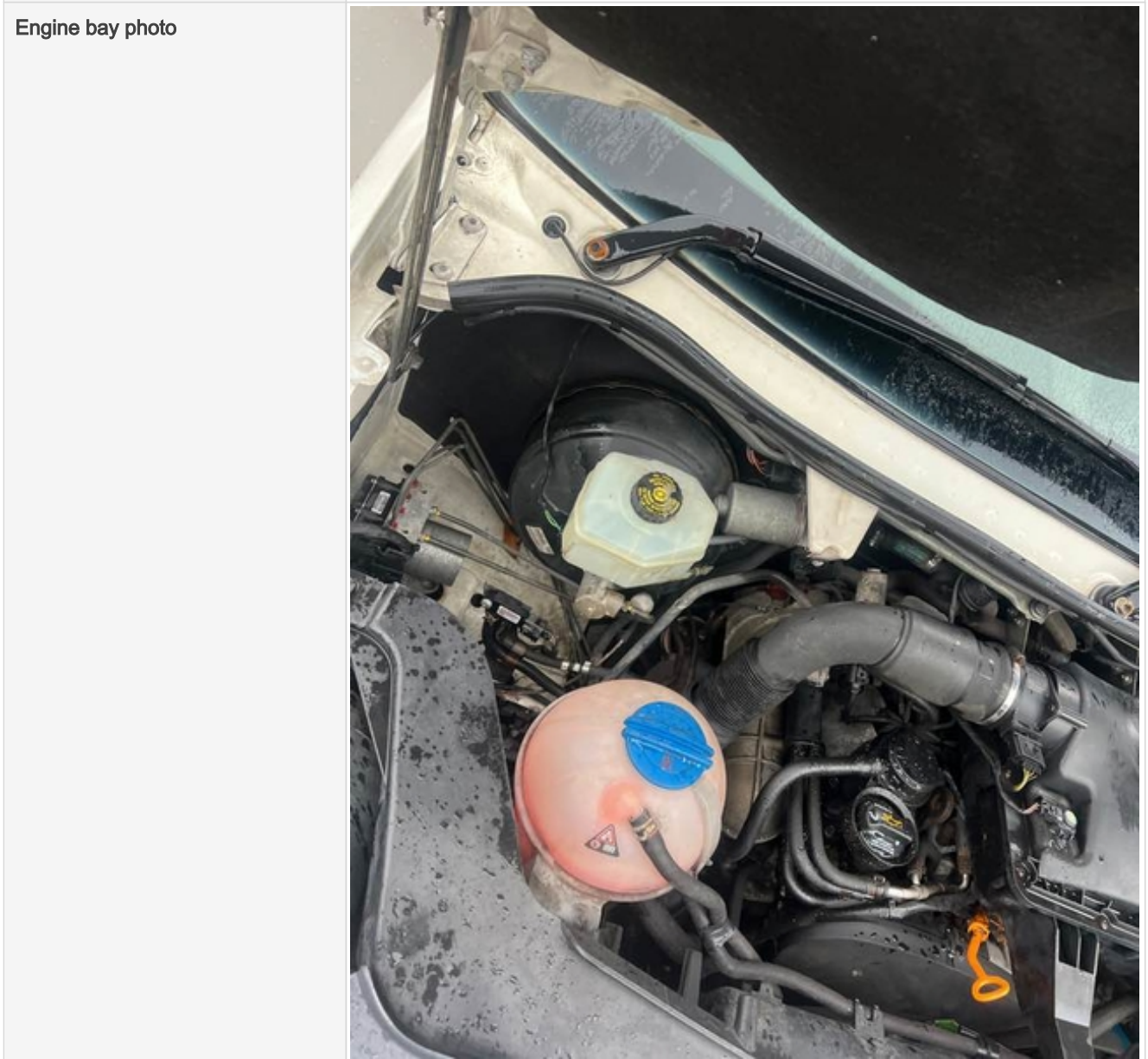
### General mechanical checks

Fuel level	3/4 Full
Oil level	Medium
Oil conditon	Service due soon
Start up, chassis battery check	Started without jump pack
Start-up from cold	Instant
Exhaust smoke from cold	Normal
Output Voltage of Alternator test	13.9
Chain or Belt driven engine?	Belt
If belt any proof of change?	No



## Basevan.com General Inspection

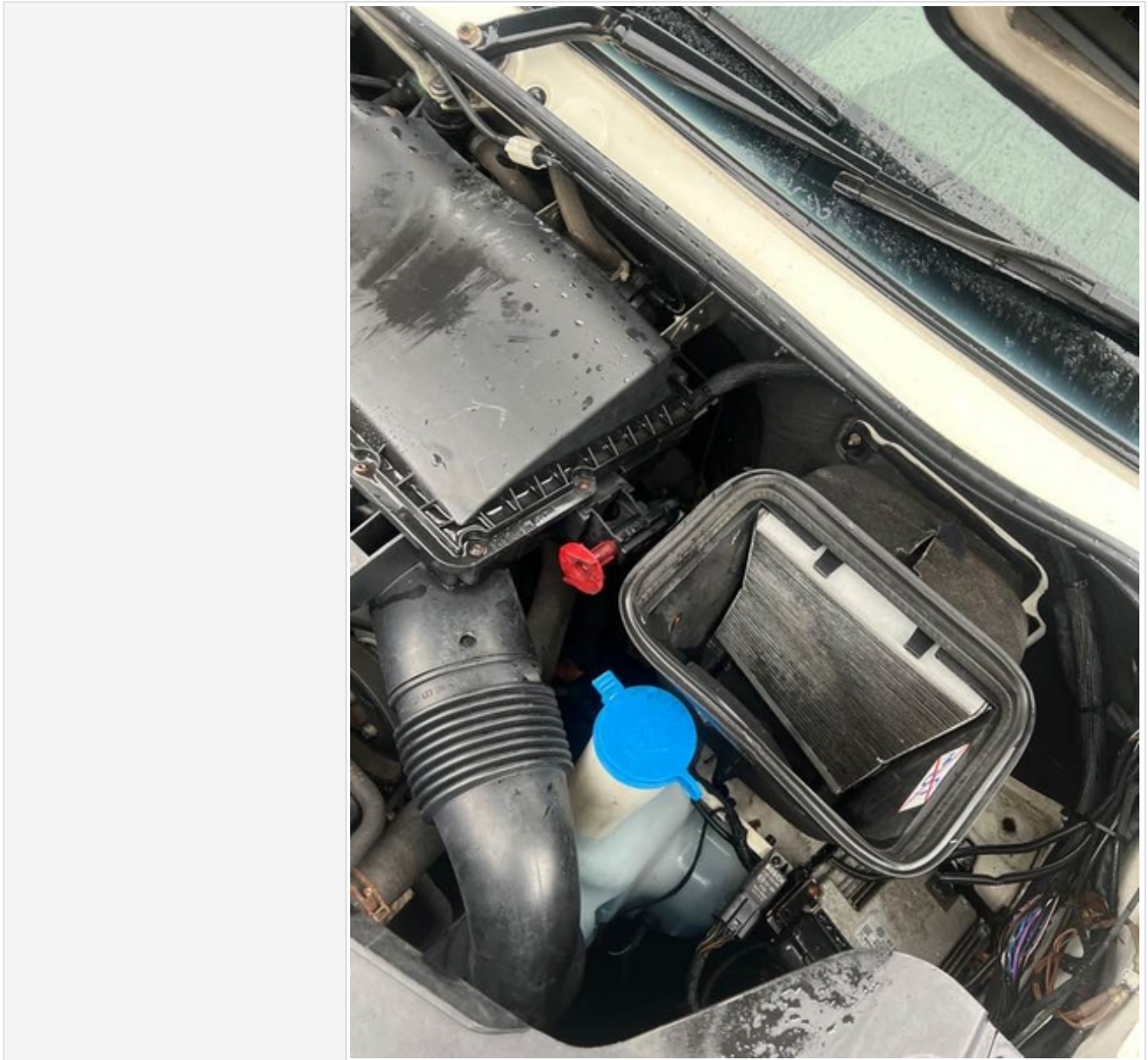
Coolant condition	Clean
Coolant level	Full
Anti-freeze temperature check	-23
Washer fluid	Full
Brake fluid	Full
Power steering fluid	Miniumum
Dashboard warning light	No warning lights
OBD Scan results	







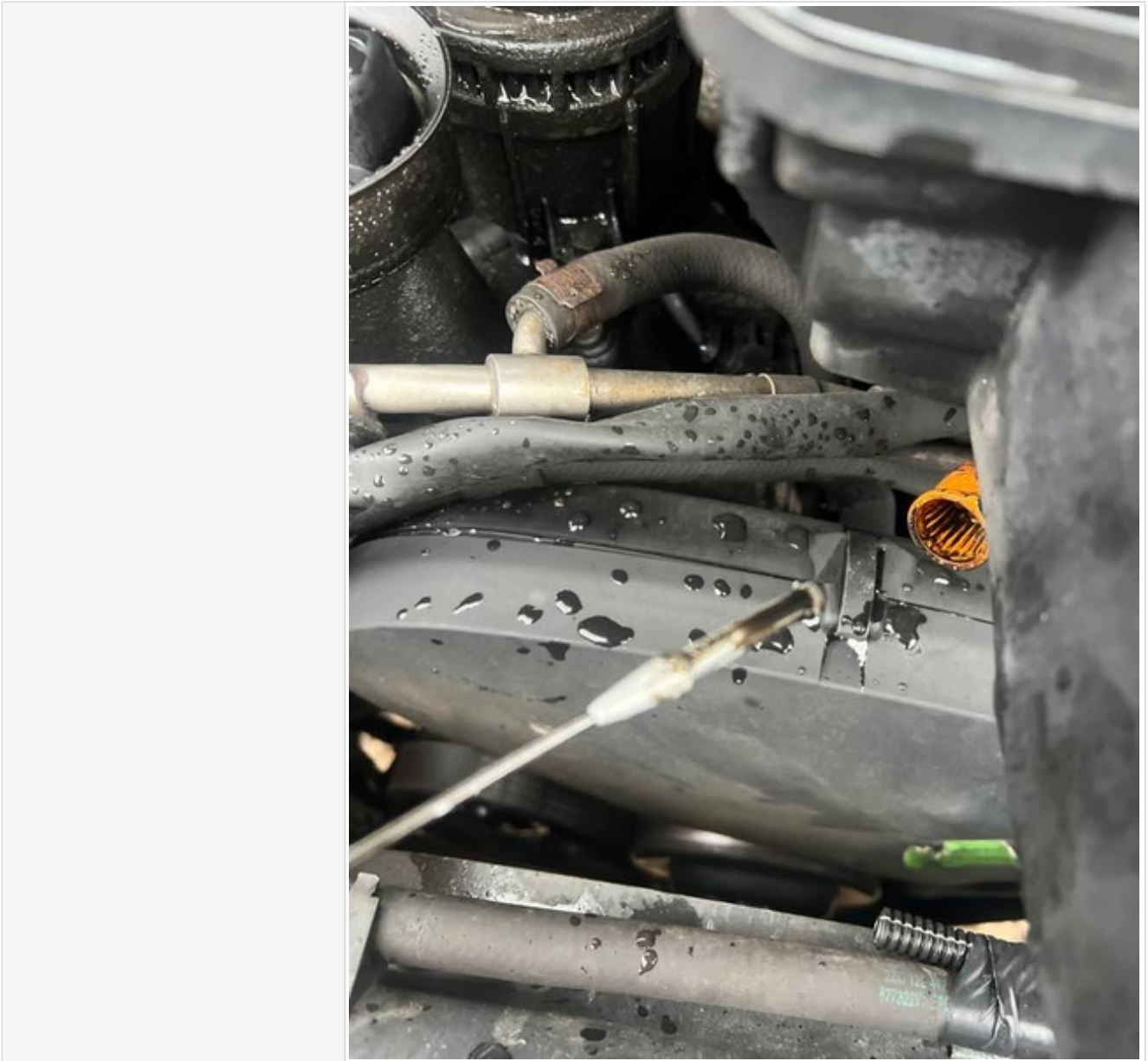
## Basevan.com General Inspection







## Basevan.com General Inspection



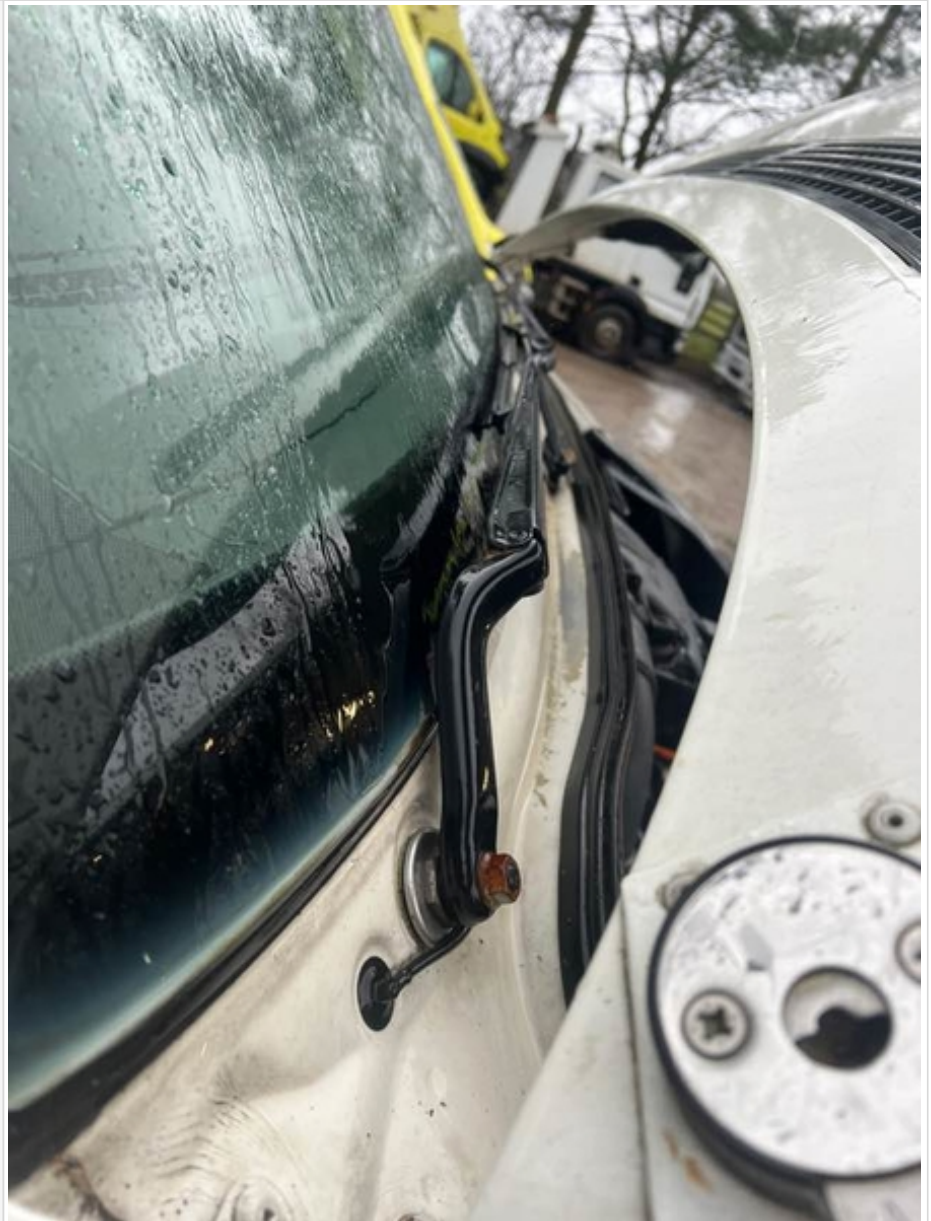


## Basevan.com General Inspection





## Basevan.com General Inspection



Comment