




Basevan.com General Inspection

Inspection details

Name of inspector	Wallis
Date of inspection	22/01/2025
Signature	

Vehicle details

Vehicle registration	CN06CWF
Vehicle chassis no.	WDB9036622R949859
Miles (if in km, multiply by 0.62)	99,677
Make	Mercedes
Model	Sprinter
Transmission	Automatic
Factory immobiliser installed	Yes
Speed limiter installed	N/A
Drive configuration	RWD
Gross Vehicle Weight (kg)	3500
Towing capacity	2,800
Tow bar installed	No

Off side front

Age (month/year) Manufactured	16/06
Make, brand.	Continental
Tyre size	Not here (see comment)
Pressure 1	46
Pressure 2	
Wearing / Perishing (inner)	Medium
Wearing / Perishing (outer)	Medium
tread depth (mm)	5
General comments	225/70R15



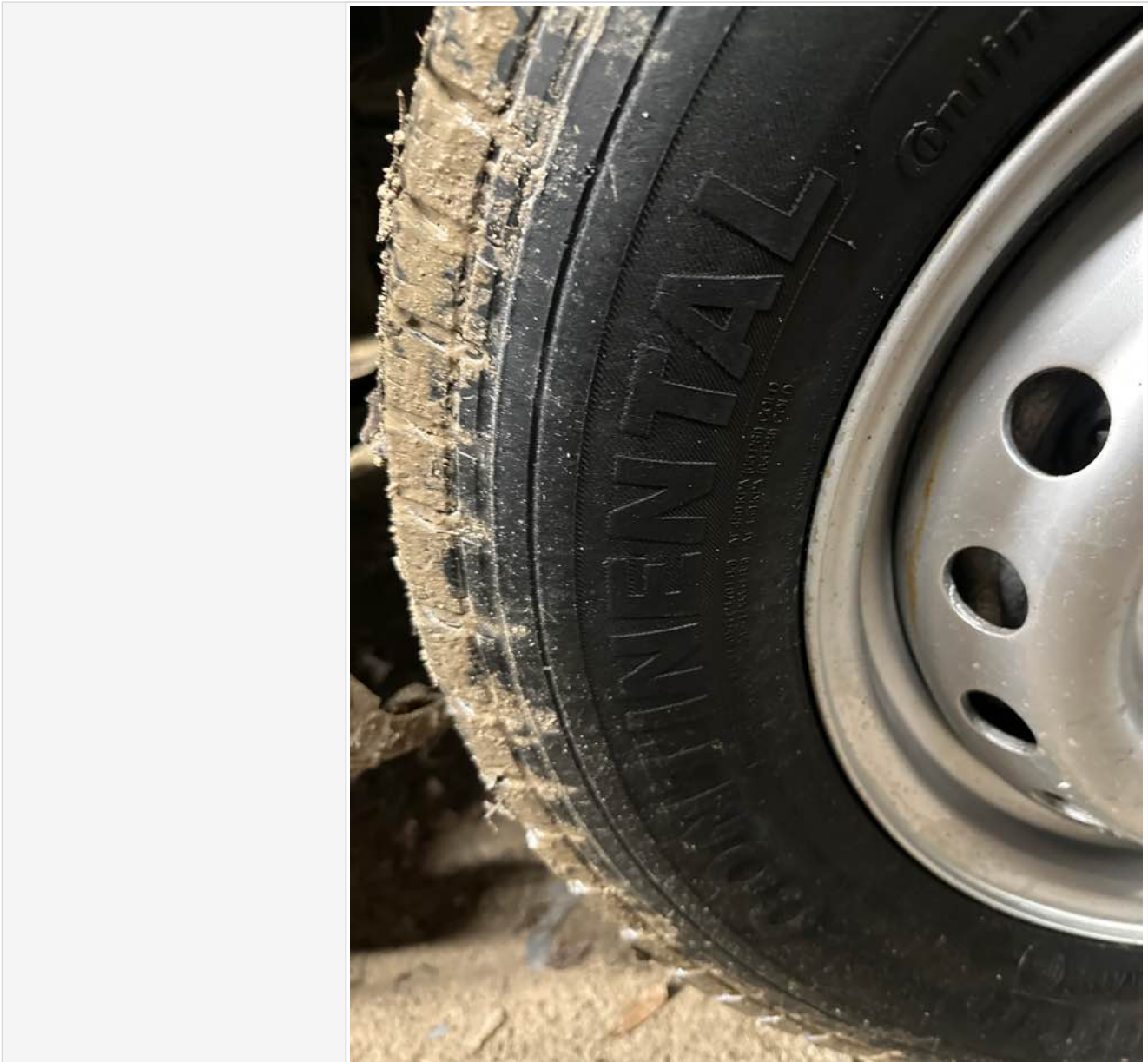
Basevan.com General Inspection

Images of tyre





Basevan.com General Inspection



Near side front

Age (month/year) Manufactured	15/06
Make, brand.	Continental
Tyre size	Not here (see comment)
Pressure 1	48
Pressure 2	
Wearing / Perishing (inner)	Medium
Wearing / Perishing (outer)	Medium
tread depth (mm)	5
General comments	225/70R15



Basevan.com General Inspection

Images of tyre



near side rear

Age (month/year) Manufactured	32/20
Make, brand.	Hankook
Tyre size	Not here (see comment)
Pressure 1	60
Pressure 2	
Wearing / Perishing (inner)	Medium
Wearing / Perishing (outer)	Medium
tread depth (mm)	4
General comments	225/70R15



Basevan.com General Inspection

Images of tyre





Basevan.com General Inspection



Off side rear

Age (month/year) Manufactured	04/19
Make, brand.	Other (comment)
Tyre size	Not here (see comment)
Pressure 1	62
Pressure 2	
Wearing / Perishing (inner)	Medium
Wearing / Perishing (outer)	Medium
tread depth (mm)	5
General comments	Bridgestone 225/70R15
Images of tyre	

off side Inner (for twin wheel vans)

Is the vehicle a twin wheel axle? (if no don't fill out)	No
Age (month/year) Manufactured	
Make, brand.	
Tyre size	
Pressure 1	
Pressure 2	
Wearing / Perishing (inner)	
Wearing / Perishing (outer)	



Basevan.com General Inspection

tread depth (mm)	
General comments	
Images of tyre	

near side Inner (for twin wheel vans)

Is the vehicle a twin wheel axle? (if no don't fill out)	No
Age (month/year) Manufactured	
Make, brand.	
Tyre size	
Pressure 1	
Pressure 2	
Wearing / Perishing (inner)	
Wearing / Perishing (outer)	
tread depth (mm)	
General comments	
Images of tyre	

Spare wheel


Spare installed? (If no, don't fill out)	No
Age (month/year) Manufactured	
Make, brand.	
Tyre size	
Pressure 1	
Pressure 2	
Wearing / Perishing (inner)	
Wearing / Perishing (outer)	
tread depth (mm)	
General comments	
Images of tyre	

Vehicle locking

Factory central locking fitted?	Yes
Response from key fob?	Yes
Response from in-cab locking button?	Yes
Do all the doors lock from central locking function?	None



Basevan.com General Inspection

Select the following doors that lock.	N/S SL, N/S Rear, O/S Rear
Method of locking	Key
In conclusion can all the doors be locked in some way and thus the vehicle can be left unattended at night safely?	No
How many keys present at time of inspection?	
Comment	

In cab checks

Number of seats (cab only)	Driver & 1 passenger
Cab heater check	Works on all settings
Comment on cab heater	



Basevan.com General Inspection

Electric windows present	Yes
Cab windows function check	Driver side function, Passenger side function
Air conditioning present	No
Charging socket present (cigarette lighter)	Yes
Function working?	No
Radio / Media system fitted?	Yes
Radio / media system check	Functions
Reverse camera present?	No
Reverse camera functioning?	N/A
Show any damage or missing items	

General mechanical checks

Fuel level	1/2 Full
Oil level	Full
Oil conditon	Clean
Start up, chassis battery check	Started without jump pack
Start-up from cold	2 seconds
Exhaust smoke from cold	Normal
Output Voltage of Alternator test	14
Chain or Belt driven engine?	Chain
If belt any proof of change?	N/A
Coolant condition	Clean
Coolant level	Full
Anti-freeze temperature check	
Washer fluid	Full
Brake fluid	Full
Power steering fluid	Maximum
Dashboard warning light	No warning lights
OBD Scan results	



Basevan.com General Inspection

Engine bay photo





Basevan.com General Inspection



Comment