



Basevan.com General Inspection

Inspection details

Name of inspector	Franklyn T Bromfield
Date of inspection	16/12/2024
Signature	

Vehicle details

Vehicle registration	LJ15LJZ
Vehicle chassis no.	WOLMTF8ZWFB069957
Miles (if in km, multiply by 0.62)	66345
Make	Vauxhall
Model	Movano
Transmission	Manual, 6 speed
Factory immobiliser installed	Yes
Speed limiter installed	
Drive configuration	RWD
Gross Vehicle Weight (kg)	4500
Towing capacity	3000
Tow bar installed	No

Off side front

Age (month/year) Manufactured	25/21
Make, brand.	Good Year
Tyre size	195/75/R16
Pressure 1	
Pressure 2	
Wearing / Perishing (inner)	none
Wearing / Perishing (outer)	None
tread depth (mm)	5
General comments	good tyre



Basevan.com General Inspection

Images of tyre



Near side front

Age (month/year) Manufactured	25/21
Make, brand.	Good Year
Tyre size	195/75/R16
Pressure 1	
Pressure 2	
Wearing / Perishing (inner)	none
Wearing / Perishing (outer)	None
tread depth (mm)	5
General comments	good tyre



Basevan.com General Inspection

Images of tyre



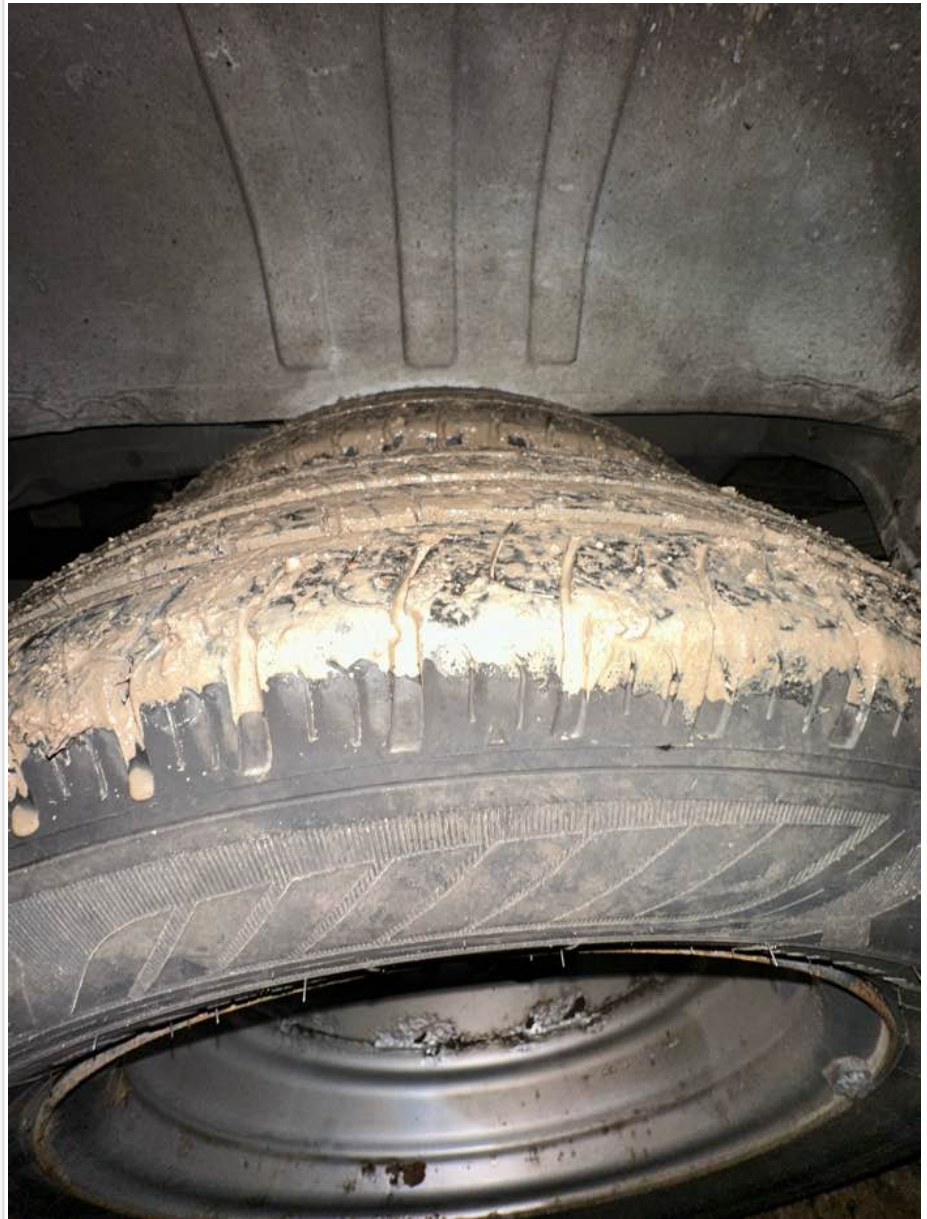
near side rear

Age (month/year) Manufactured	21/19
Make, brand.	Good Year
Tyre size	195/75/R16
Pressure 1	
Pressure 2	
Wearing / Perishing (inner)	none
Wearing / Perishing (outer)	None
tread depth (mm)	7
General comments	great condition



Basevan.com General Inspection

Images of tyre



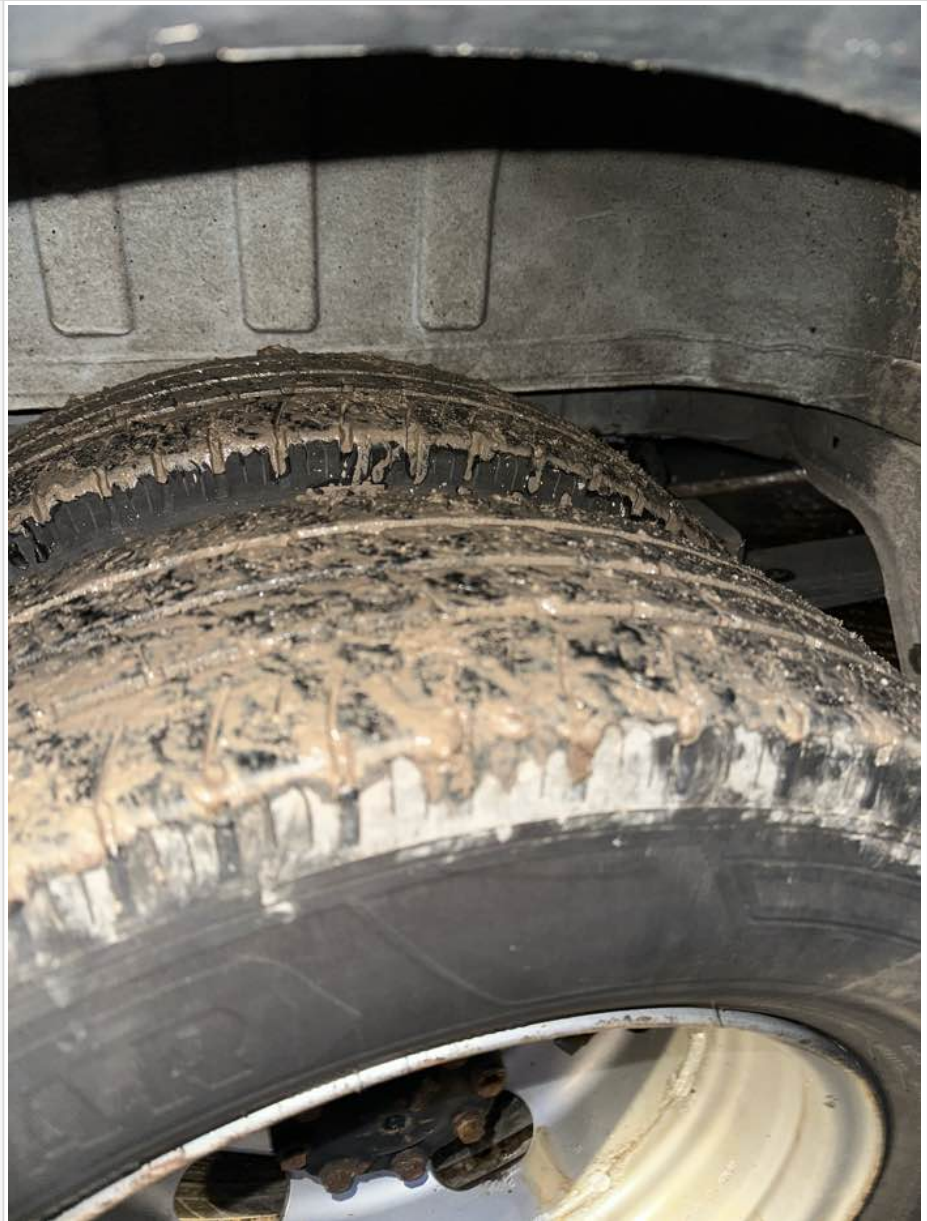
Off side rear

Age (month/year) Manufactured	21/19
Make, brand.	Good Year
Tyre size	195/75/R16
Pressure 1	
Pressure 2	
Wearing / Perishing (inner)	none
Wearing / Perishing (outer)	None
tread depth (mm)	7
General comments	great tyre



Basevan.com General Inspection

Images of tyre



off side Inner (for twin wheel vans)

Is the vehicle a twin wheel axle? (if no don't fill out)	N/A
Age (month/year) Manufactured	21/19
Make, brand.	Good Year
Tyre size	195/75/R16
Pressure 1	
Pressure 2	
Wearing / Perishing (inner)	none
Wearing / Perishing (outer)	None



Basevan.com General Inspection

tread depth (mm)	7
General comments	good tyre
Images of tyre	

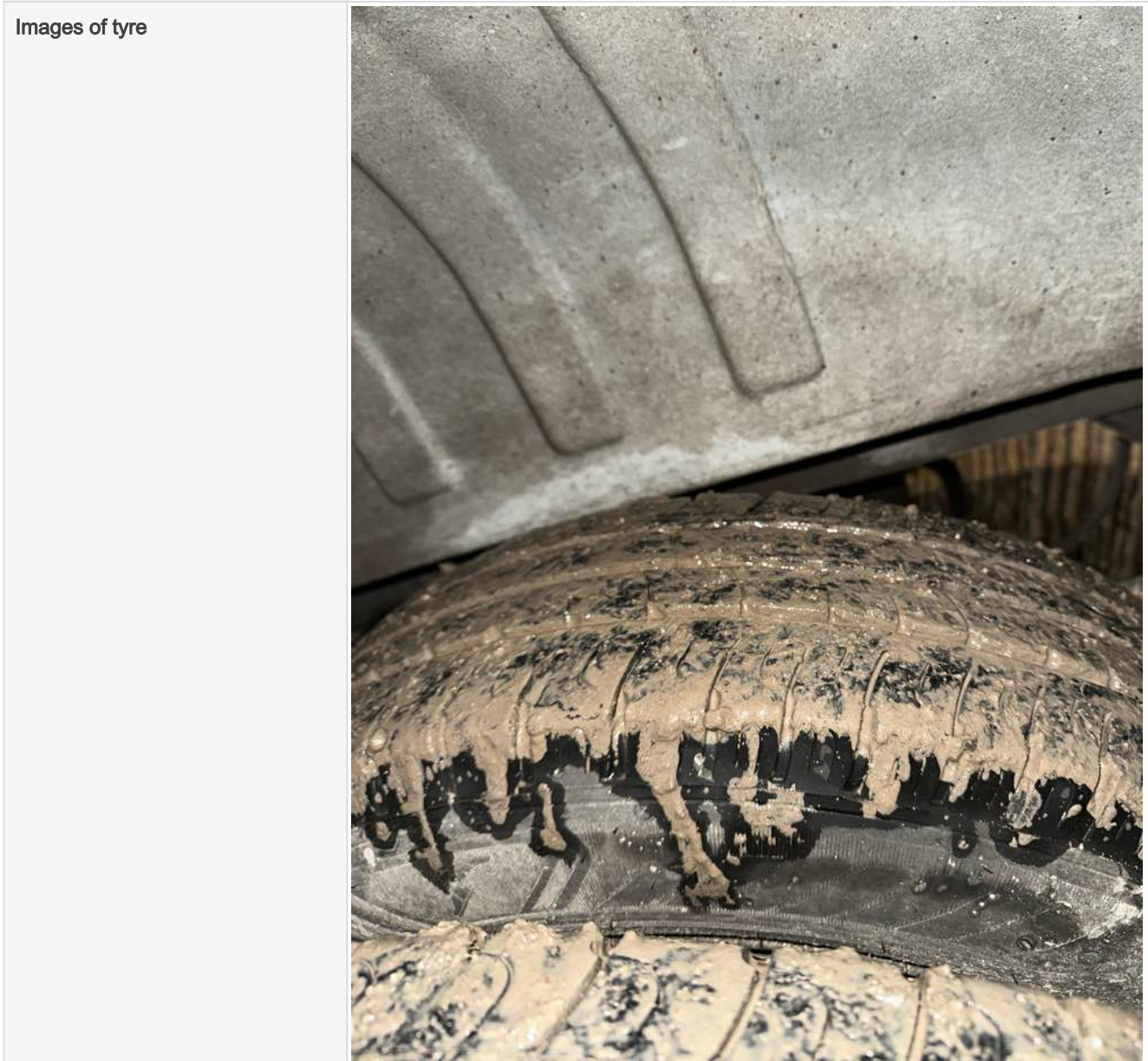
near side Inner (for twin wheel vans)

Is the vehicle a twin wheel axle? (if no don't fill out)	Yes
Age (month/year) Manufactured	21/19
Make, brand.	Good Year
Tyre size	195/75/R16
Pressure 1	
Pressure 2	



Basevan.com General Inspection

Wearing / Perishing (inner)	none
Wearing / Perishing (outer)	None
tread depth (mm)	6
General comments	great tyre



Spare wheel

Spare installed? (If no, don't fill out)	No
Age (month/year) Manufactured	
Make, brand.	
Tyre size	



Basevan.com General Inspection

Pressure 1	
Pressure 2	
Wearing / Perishing (inner)	
Wearing / Perishing (outer)	
tread depth (mm)	
General comments	
Images of tyre	

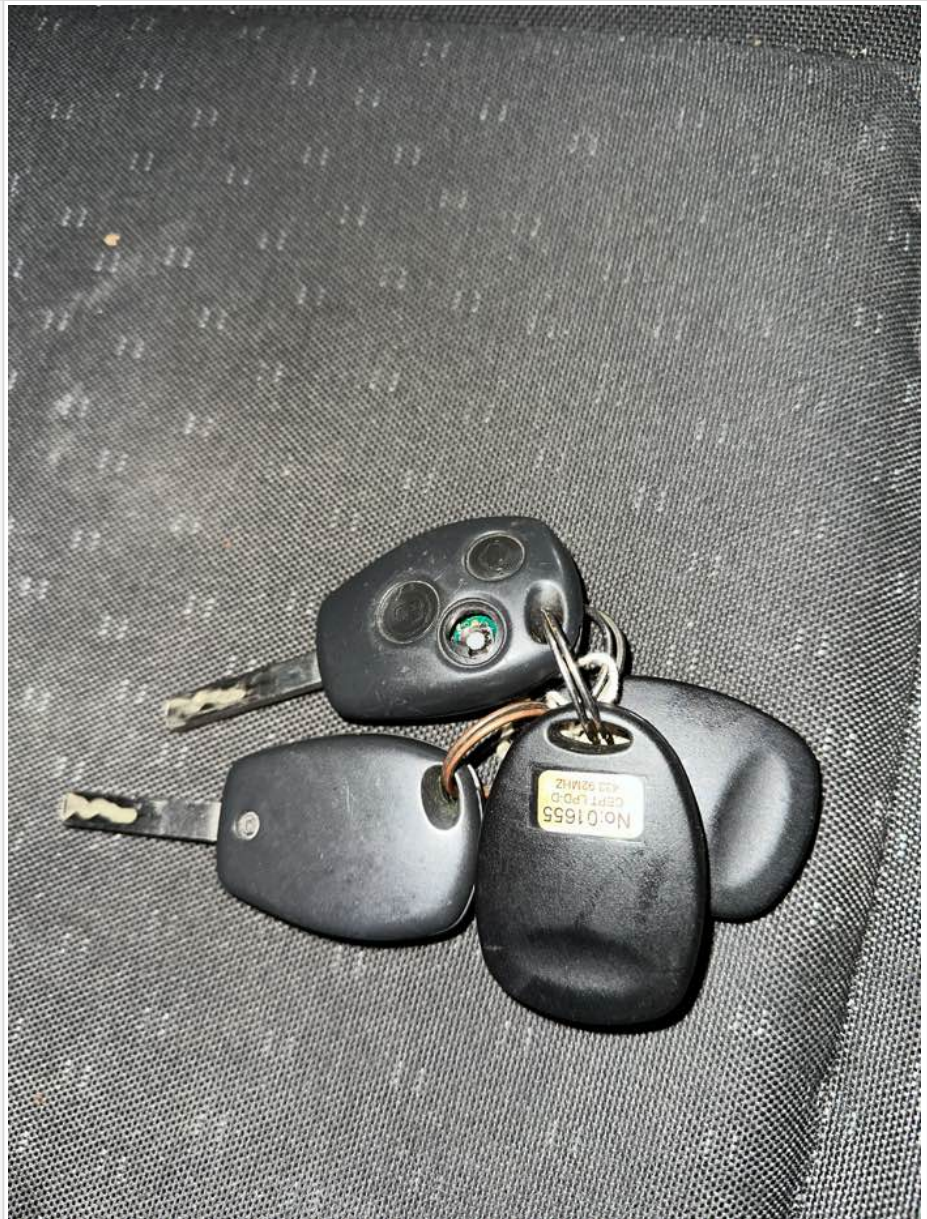
Vehicle locking

Factory central locking fitted?	Yes
Response from key fob?	Yes
Response from in-cab locking button?	Yes
Do all the doors lock from central locking function?	All
Select the following doors that lock.	N/S Front, O/S Front, N/S SL, N/S Rear, O/S Rear
Method of locking	Fob
In conclusion can all the doors be locked in some way and thus the vehicle can be left unattended at night safely?	Yes



Basevan.com General Inspection

How many keys present at time of inspection?



Comment


works as intended

In cab checks

Number of seats (cab only)	Driver & 1 passenger
Cab heater check	Works on all settings
Comment on cab heater	dial a little notchy
Electric windows present	Yes
Cab windows function check	Driver side function, Passenger side function
Air conditioning present	Yes
Charging socket present (cigarette lighter)	Yes



Basevan.com General Inspection


Function working?	Yes
Radio / Media system fitted?	
Radio / media system check	Functions
Reverse camera present?	No
Reverse camera functioning?	N/A
Show any damage or missing items	

General mechanical checks

Fuel level	1/2 Full
Oil level	Full
Oil conditon	Clean
Start up, chassis battery check	Started without jump pack



Basevan.com General Inspection

Start-up from cold	Instant
Exhaust smoke from cold	Normal
Output Voltage of Alternator test	13.7
Chain or Belt driven engine?	Chain
If belt any proof of change?	n/a
Coolant condition	Clean
Coolant level	Full
Anti-freeze temperature check	-15
Washer fluid	Medium
Brake fluid	Full
Power steering fluid	Maximum
Dashboard warning light	No warning lights
OBD Scan results	
Engine bay photo	
Comment	mechanically very good, normal for a movano :)