




## Basevan.com General Inspection

### Inspection details

Name of inspector	Wallis
Date of inspection	22/11/2024
Signature	

### Vehicle details

Vehicle registration	SC10AKN
Vehicle chassis no.	VSKF4AHA6UV180579
Miles (if in km, multiply by 0.62)	175391
Make	Nissan
Model	Primastar
Transmission	Manual, 6 speed
Factory immobiliser installed	Yes
Speed limiter installed	N/A
Drive configuration	FWD
Gross Vehicle Weight (kg)	2770
Towing capacity	N/A
Tow bar installed	Yes

### Off side front

Age (month/year) Manufactured	01/21
Make, brand.	Budget
Tyre size	Not here (see comment)
Pressure 1	34
Pressure 2	
Wearing / Perishing (inner)	Slight
Wearing / Perishing (outer)	Slight
tread depth (mm)	6
General comments	195/65R/16C



## Basevan.com General Inspection

Images of tyre



### Near side front

Age (month/year) Manufactured	01/21
Make, brand.	Budget
Tyre size	Not here (see comment)
Pressure 1	34
Pressure 2	
Wearing / Perishing (inner)	Slight
Wearing / Perishing (outer)	Slight
tread depth (mm)	6
General comments	195/65R/16C



## Basevan.com General Inspection

Images of tyre



### near side rear

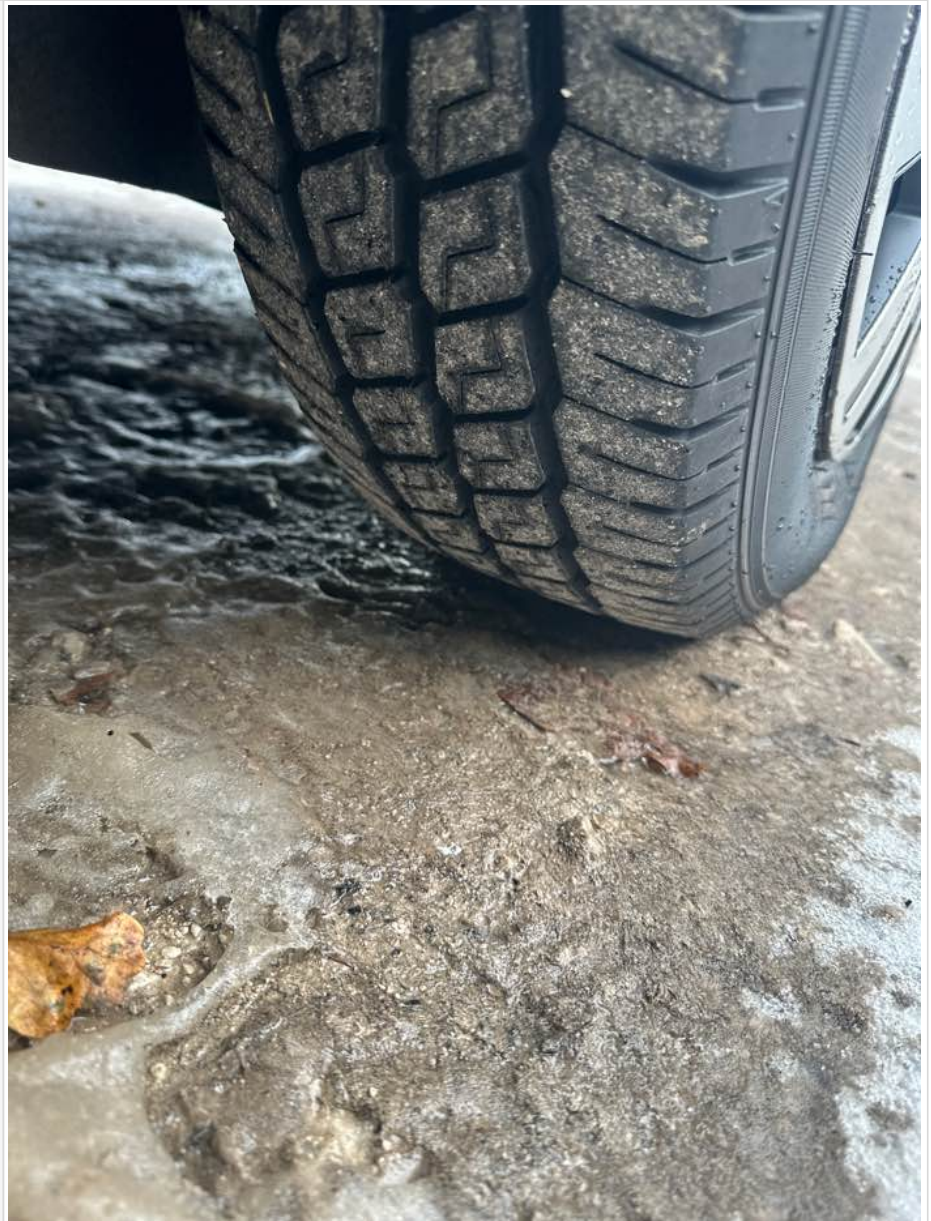
Age (month/year) Manufactured	46/21
Make, brand.	Budget
Tyre size	Not here (see comment)
Pressure 1	32
Pressure 2	
Wearing / Perishing (inner)	Slight
Wearing / Perishing (outer)	Slight
tread depth (mm)	9
General comments	195/65R/16C





## Basevan.com General Inspection

Images of tyre



### Off side rear

Age (month/year) Manufactured	16/15
Make, brand.	Budget
Tyre size	Not here (see comment)
Pressure 1	34
Pressure 2	
Wearing / Perishing (inner)	Slight
Wearing / Perishing (outer)	Slight
tread depth (mm)	6
General comments	195/65R/16C



## Basevan.com General Inspection

Images of tyre



### off side Inner (for twin wheel vans)

Is the vehicle a twin wheel axle? (if no don't fill out)	No
Age (month/year) Manufactured	
Make, brand.	
Tyre size	
Pressure 1	
Pressure 2	
Wearing / Perishing (inner)	
Wearing / Perishing (outer)	



## Basevan.com General Inspection

tread depth (mm)	
General comments	
Images of tyre	

### near side Inner (for twin wheel vans)

Is the vehicle a twin wheel axle? (if no don't fill out)	No
Age (month/year) Manufactured	
Make, brand.	
Tyre size	
Pressure 1	
Pressure 2	
Wearing / Perishing (inner)	
Wearing / Perishing (outer)	
tread depth (mm)	
General comments	
Images of tyre	

### Spare wheel

Spare installed? (If no, don't fill out)	No
Age (month/year) Manufactured	
Make, brand.	
Tyre size	
Pressure 1	
Pressure 2	
Wearing / Perishing (inner)	
Wearing / Perishing (outer)	
tread depth (mm)	
General comments	
Images of tyre	

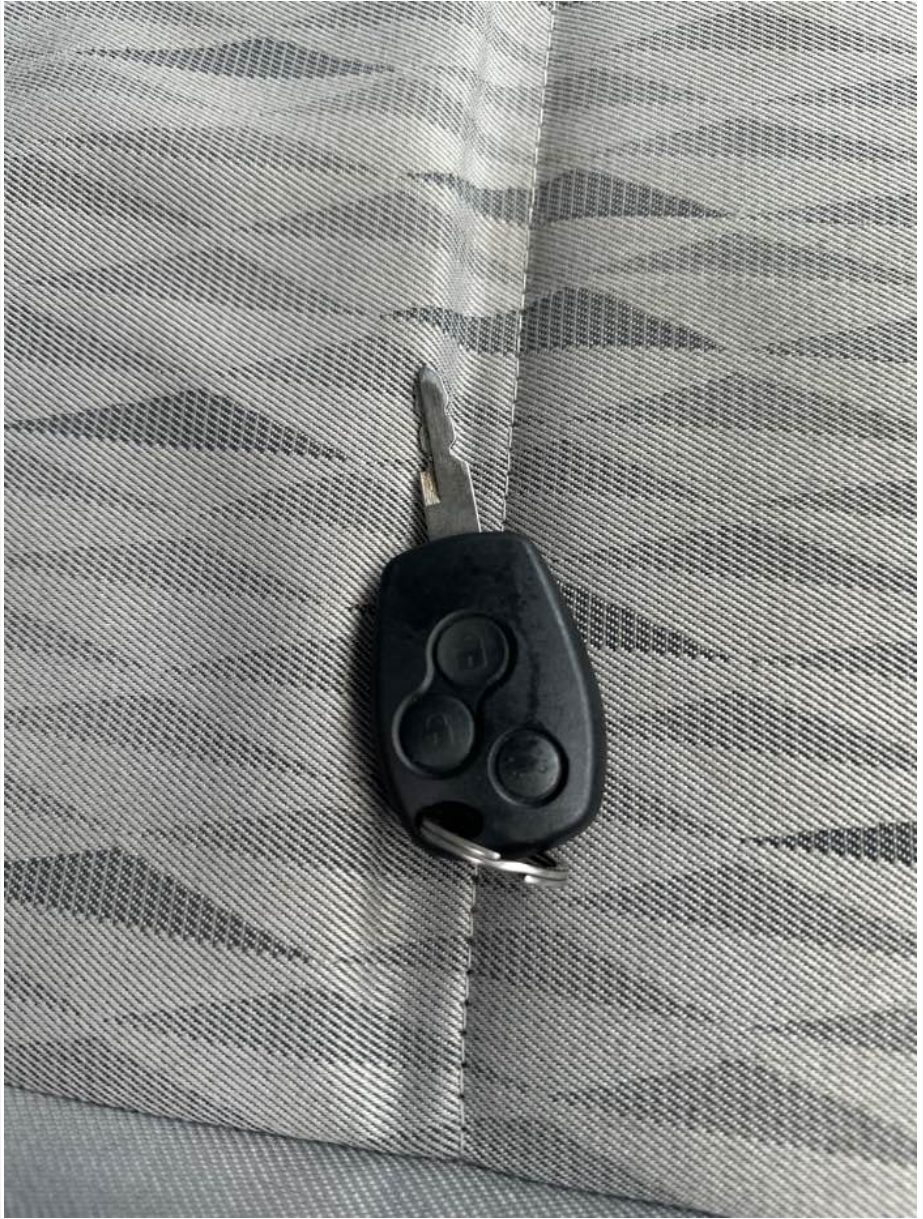
### Vehicle locking

Factory central locking fitted?	Yes
Response from key fob?	Yes
Response from in-cab locking button?	Yes
Do all the doors lock from central locking function?	All





## Basevan.com General Inspection

Select the following doors that lock.	N/S Front, O/S Front, N/S SL, O/S Rear, N/S Rear
Method of locking	Fob
In conclusion can all the doors be locked in some way and thus the vehicle can be left unattended at night safely?	Yes
How many keys present at time of inspection?	
Comment	

### In cab checks

Number of seats (cab only)	Driver & 1 passenger
Cab heater check	Works on all settings
Comment on cab heater	



## Basevan.com General Inspection

Electric windows present	Yes
Cab windows function check	Driver side function, Passenger side function
Air conditioning present	Yes
Charging socket present (cigarette lighter)	Yes
Function working?	Yes
Radio / Media system fitted?	Yes
Radio / media system check	Functions
Reverse camera present?	No
Reverse camera functioning?	N/A
Show any damage or missing items	

## General mechanical checks

Fuel level	1/2 Full
Oil level	Medium
Oil condition	Requires replacing
Start up, chassis battery check	Started without jump pack
Start-up from cold	4 seconds
Exhaust smoke from cold	some white
Output Voltage of Alternator test	14
Chain or Belt driven engine?	Chain
If belt any proof of change?	N/A
Coolant condition	Clean
Coolant level	Medium
Anti-freeze temperature check	
Washer fluid	Medium
Brake fluid	Full
Power steering fluid	Maximum
Dashboard warning light	No warning lights





## Basevan.com General Inspection

OBD Scan results

Bookmarks: VIN Help

Eclipse auto.com

Nissan Primastar ... | 2010

ISS – Intelligent System Scan

System search finished, no error codes found


Type of system

- Service Light Reset (SLR)
- Petrol
- Diesel
- Brake
- Instrument
- Climate
- Gearbox
- Restraints
- ADAS
- Multifunction

Incoherence betw  
LPG (Liquid petro  
"Clear" button  
"Radio/CD" butt  
"STOP" warning  
"Text info" butto  
+ 12V idle switc  
+ Accessories  
+ Accessories  
+ Alter ignition  
+ Key  
+ 12V access  
+ 12V after 10"  
+ 12V after 10"  
+ 12V bod



## Basevan.com General Inspection

<p>Engine bay photo</p>	
<p>Comment</p>	