




## BaseVan Initial Inspection

### Inspection details

Name of inspector	Franklyn T Bromfield
Date of inspection	01/08/2024
Signature	

### Vehicle details

Vehicle registration	WA54KCY
Vehicle chassis no.	WV1ZZZ2DZ4H022653
Miles (if in km, multiply by 0.62)	42,817
Make	Volkswagen
Model	LT46
Transmission	Manual, 5 speed
Factory immobiliser installed	Yes
Speed limiter installed	No
Drive configuration	RWD
Gross vehicle weight	4600kg
Towing capacity	2000kg
Tow bar installed	Yes

### Off side front

Age (month/year) Manufactured	Inside
Make, brand.	Good Year
Tyre size	195/75/R16
Pressure 1	
Pressure 2	
Wearing / Perishing (inner)	none
Wearing / Perishing (outer)	None
tread depth (mm)	8
General comments	basically brand new, very recent tyre



## BaseVan Initial Inspection

Images of tyre



### Near side front

Age (month/year) Manufactured	Inside
Make, brand.	Good Year
Tyre size	195/75/R16
Pressure 1	
Pressure 2	
Wearing / Perishing (inner)	none
Wearing / Perishing (outer)	None
tread depth (mm)	8
General comments	basically brand new, very recent tyre



## BaseVan Initial Inspection

Images of tyre



### near side rear

Age (month/year) Manufactured	inside
Make, brand.	Good Year
Tyre size	195/75/R16
Pressure 1	
Pressure 2	
Wearing / Perishing (inner)	none
Wearing / Perishing (outer)	None
tread depth (mm)	8
General comments	very good tread, recent tyre





## BaseVan Initial Inspection

Images of tyre

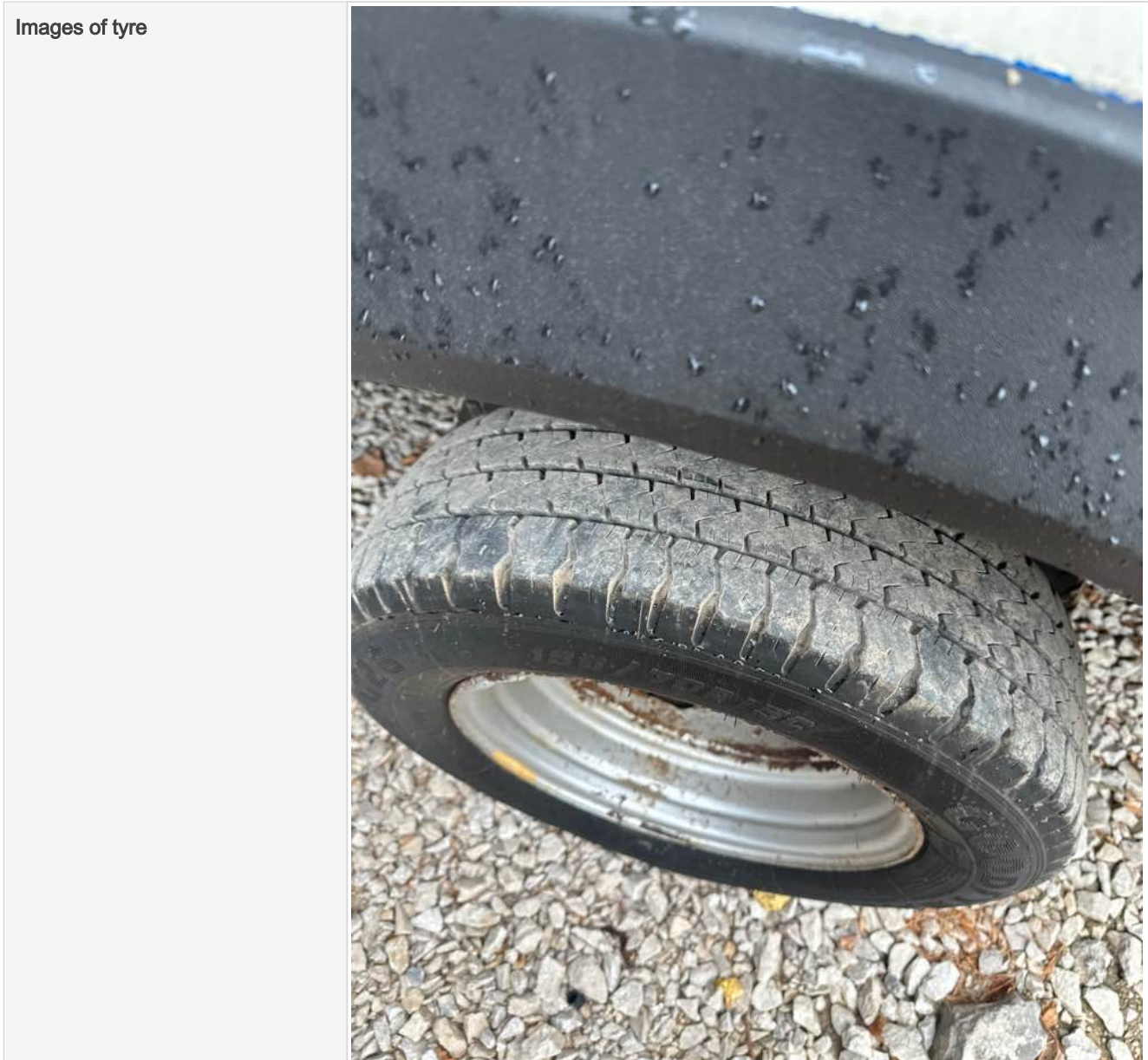


### Off side rear

Age (month/year) Manufactured	inside
Make, brand.	Good Year
Tyre size	195/75/R16
Pressure 1	
Pressure 2	
Wearing / Perishing (inner)	none
Wearing / Perishing (outer)	None
tread depth (mm)	6
General comments	more worn than the rest yet still very good



## BaseVan Initial Inspection




### off side Inner (for twin wheel vans)

Is the vehicle a twin wheel axle? (if no don't fill out)	Yes
Age (month/year) Manufactured	inside
Make, brand.	Good Year
Tyre size	195/75/R16
Pressure 1	
Pressure 2	
Wearing / Perishing (inner)	none
Wearing / Perishing (outer)	None





## BaseVan Initial Inspection

tread depth (mm)	7
General comments	good tyre very good tread
Images of tyre	

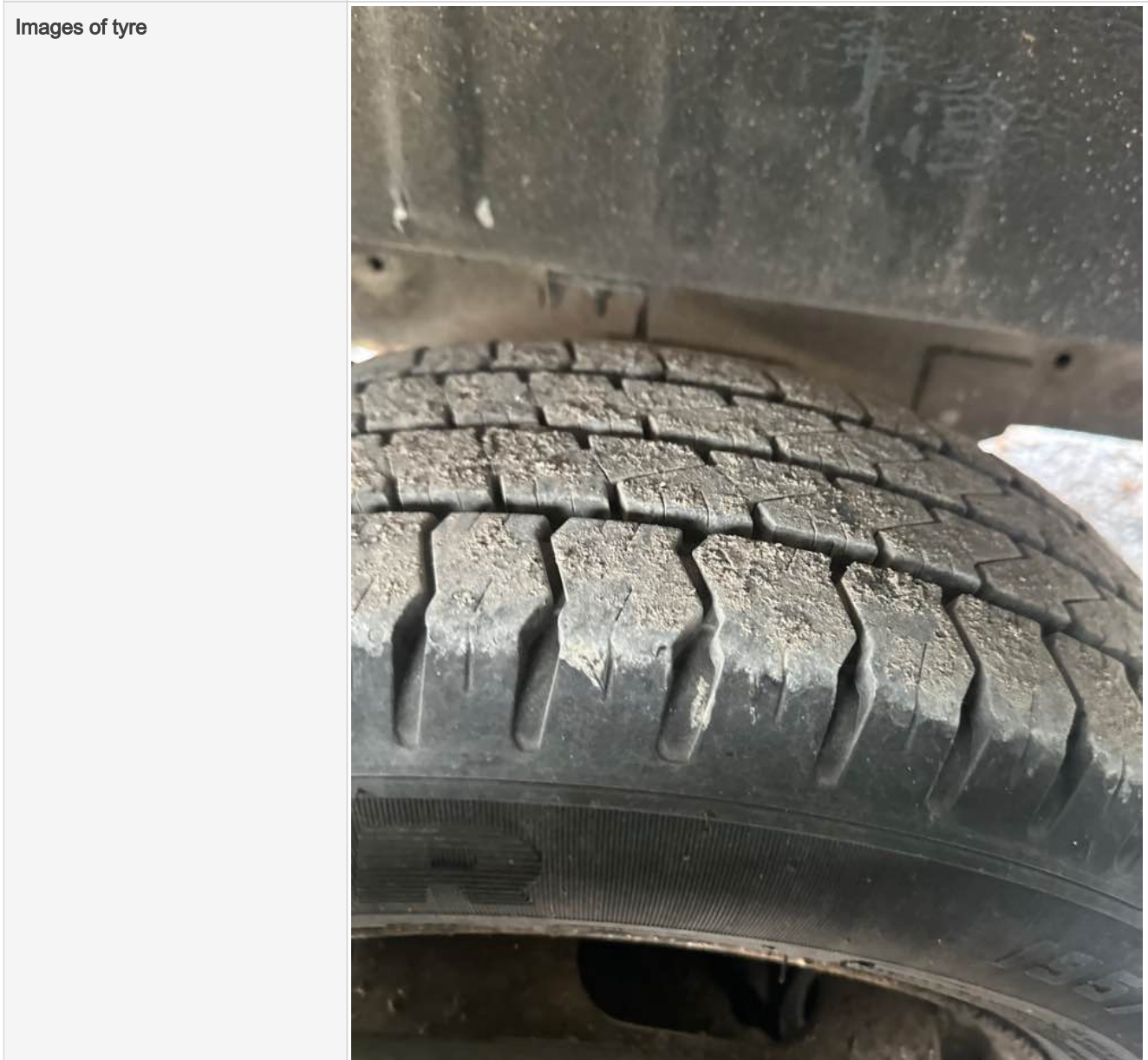
### near side Inner (for twin wheel vans)

Is the vehicle a twin wheel axle? (if no don't fill out)	Yes
Age (month/year) Manufactured	inside
Make, brand.	Good Year
Tyre size	195/75/R16
Pressure 1	
Pressure 2	



## BaseVan Initial Inspection

Wearing / Perishing (inner)	none
Wearing / Perishing (outer)	None
tread depth (mm)	8
General comments	Very good tyres all round, recent set



## Spare wheel

Spare installed? (If no, don't fill out)	N/A
Age (month/year) Manufactured	
Make, brand.	
Tyre size	



## BaseVan Initial Inspection

Pressure 1	
Pressure 2	
Wearing / Perishing (inner)	
Wearing / Perishing (outer)	
tread depth (mm)	
General comments	
Images of tyre	

## Vehicle locking

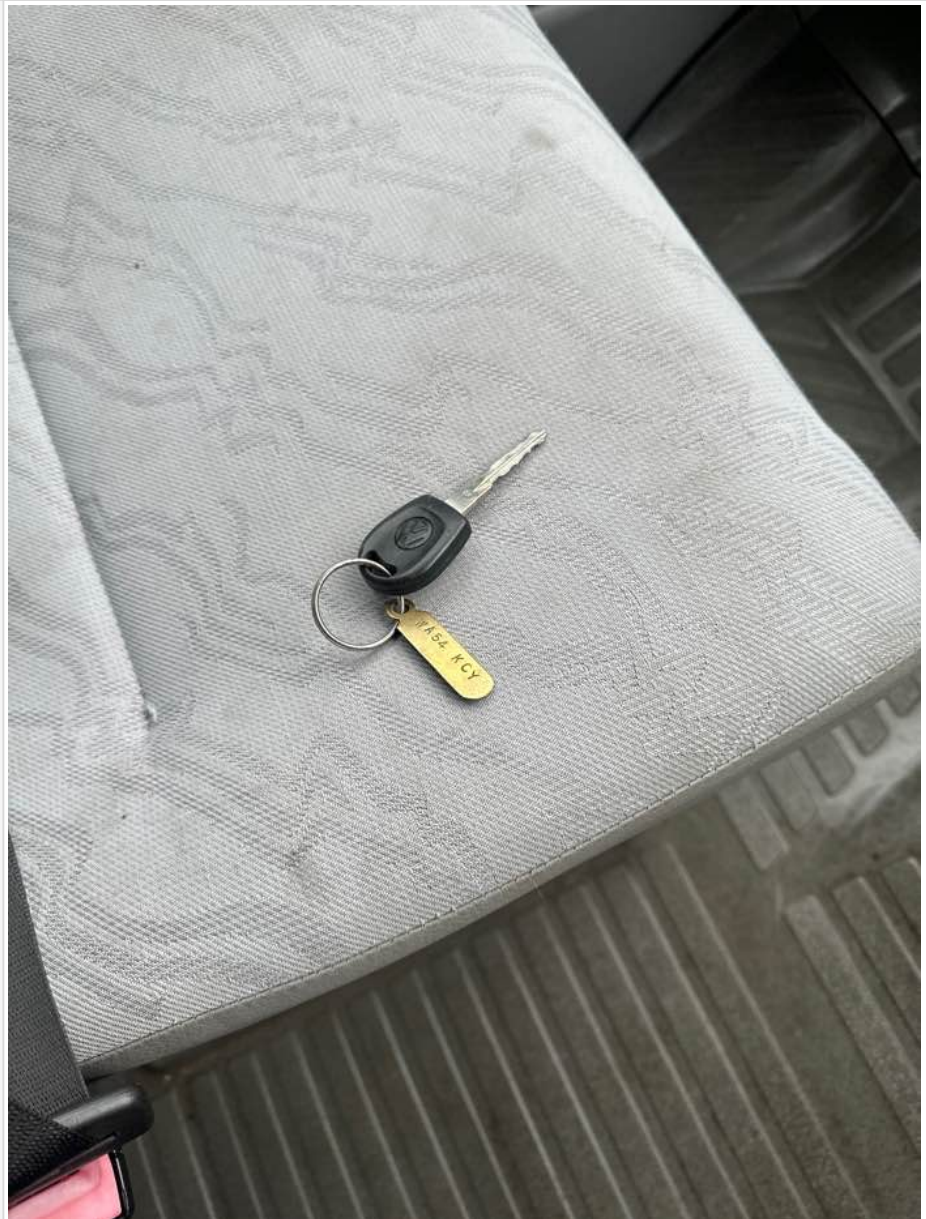
Factory central locking fitted?	Yes
Response from key fob?	N/A
Response from in-cab locking button?	N/A
Do all the doors lock from central locking function?	All
Select the following doors that lock.	N/S Front, O/S Front, N/S SL, N/S Rear, O/S Rear
Method of locking	Fob
In conclusion can all the doors be locked in some way and thus the vehicle can be left unattended at night safely?	Yes





## BaseVan Initial Inspection

How many keys present at time of inspection?



Comment


functions perfectly

### In cab checks

Number of seats (cab only)	Driver & 1 passenger
Cab heater check	Works on all settings
Comment on cab heater	1,2,3,4 all functional
Electric windows present	No
Cab windows function check	Driver side function, Passenger side function
Air conditioning present	No
Charging socket present (cigarette lighter)	Yes



## BaseVan Initial Inspection

Function working?	Yes
Radio / Media system fitted?	No
Radio / media system check	N/A not installed
Reverse camera present?	No
Reverse camera functioning?	N/A
Show any damage or missing items	

## General mechanical checks

Fuel level	1/2 Full
Oil level	Full
Oil conditon	Clean
Start up, chassis battery check	Started without jump pack



## BaseVan Initial Inspection

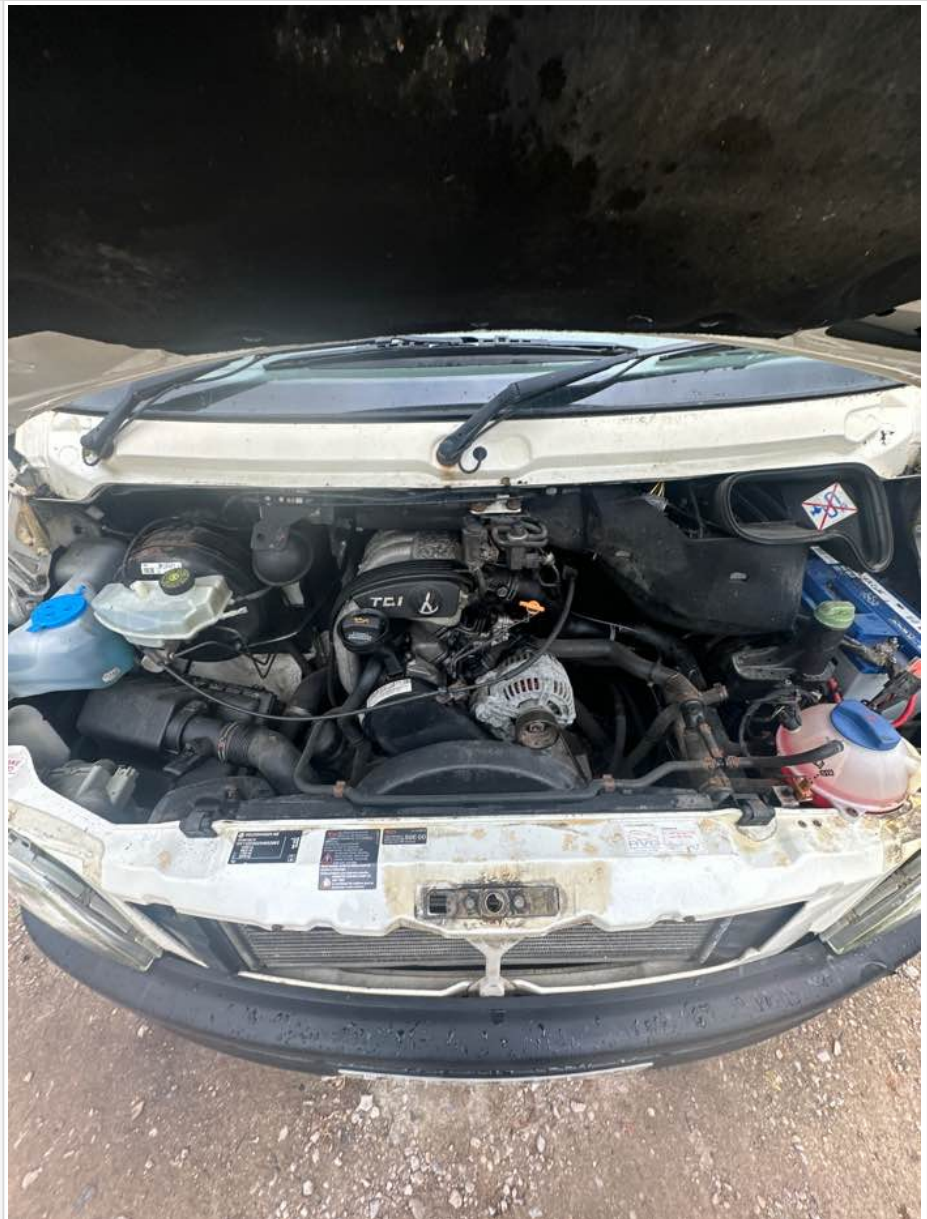
Start-up from cold	Instant
Exhaust smoke from cold	Normal
Output Voltage of Alternator test	13.7
Chain or Belt driven engine?	Belt
If belt any proof of change?	-
Coolant condition	Clean
Coolant level	Full
Anti-freeze temperature check	-16
Washer fluid	Full
Brake fluid	Full
Power steering fluid	Maximum
Dashboard warning light	No warning lights
OBD Scan results	





## BaseVan Initial Inspection

Engine bay photo



Comment

mechanically well